

City of Prince George

HISTORY SHEET

PID: 026421755

Legal: LOT 26 D.L. 1599 PLAN BCP 19756

Address: 7102 WESTGATE AVENUE

Sanitary Connection:# SIZE: 100mmØ MATERIAL: PVC INV. 747.68m CONNECTED

Water Connection:# SIZE: 19mmØ MATERIAL: COPPER INV. 747.85m METER

Storm Connection:# SIZE: 100mmØ MATERIAL: PVC INV. 747.67m CONNECTED

Cash Receipt No's: WATER SANITARY STORM

CURB FROM PROPERTY LINE 6.0m PAVEMENT WIDTH 13.0m

B.C. HYDRO 75mm DB2 U/G CONNECTION ✓

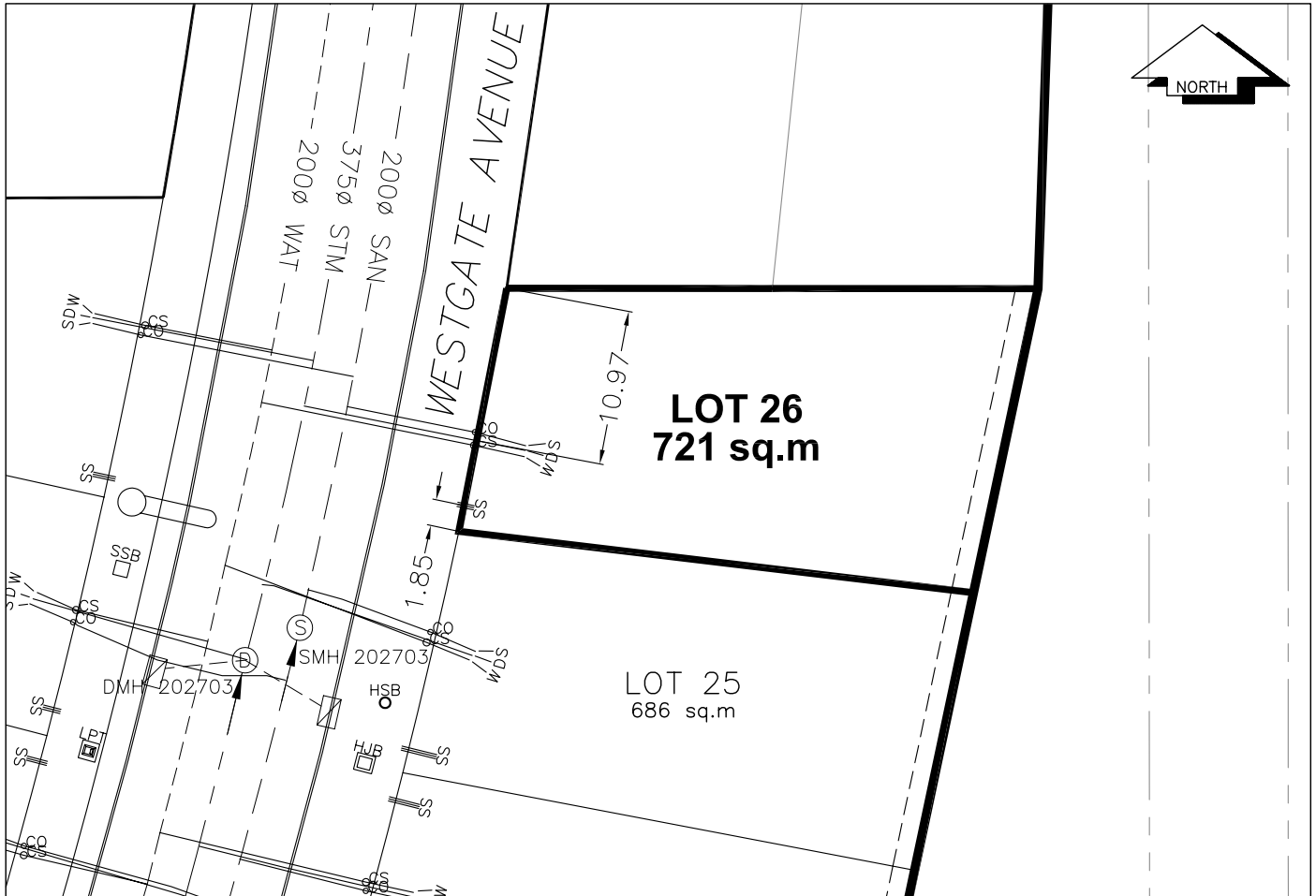
B.C. TELEPHONE 50mm DB2 U/G CONNECTION ✓

B.C. GAS 42 PROP/P.E.

Information Sheets: REF. DWGS. L&M ENGINEERING LTD. JOB. 1064-16-02 DWGS. (001-306)

Comments: CS CURB STOP SDW WATER SERVICE
CO CLEAN OUT STORM SERVICE
SHALLOW SERVICES (HYDRO, TELECOMMUNICATIONS, CABLE)

THE INFORMATION CONTAINED HEREIN IS FOR INTERNAL USE ONLY.
NOT TO BE RELIED UPON UNLESS CONFIRMED BY THE SITE INSPECTION AND/OR INVESTIGATION



SANITARY, STORM & WATER SERVICE INVERTS	SANITARY	STORM	WATER
1. Distance from San. M.H. GE33G to connection point is 61.06 toward San. M.H. 202703		N/A	N/A
1a.Distance from Stm. M.H. 203706 to connection point is 57.95 toward Stm. M.H. 202703	N/A		N/A
2. Main Size at connection point is	200mmØ	375mmØ	200mmØ
3. Invert of main at conn. stub pt is	745.59	745.69	746.14
4. Invert at service end is	747.68	747.67	747.85
5. Cut at P/I in meters	2.3m	2.3m	2.3m
6. Survey Date JULY/SEPT 20 05 Book Ref. 1064-16-02 by FORESIGHT			

SANITARY HISTORY:

WATER HISTORY:

STORM HISTORY:
