

City of Prince George

HISTORY SHEET

PID: 026421712

Legal: LOT 22

D.L. 1599

PLAN BCP 19756

Address: 7132 WESTGATE AVENUE / 3202 EMBREE PLACE

Sanitary Connection:# SIZE: 100mm \emptyset MATERIAL: PVC INV. 750.46m CONNECTED

Water Connection:# SIZE: 19mm \emptyset MATERIAL: COPPER INV. 750.50m METER

Storm Connection:# SIZE: 100mm \emptyset MATERIAL: PVC INV. 750.46m CONNECTED

Cash Receipt No's: WATER SANITARY STORM

CURB FROM PROPERTY LINE 5.0m PAVEMENT WIDTH 10.0m

B.C. HYDRO 75mm DB2 U/G CONNECTION



B.C. TELEPHONE 50mm DB2 U/G CONNECTION

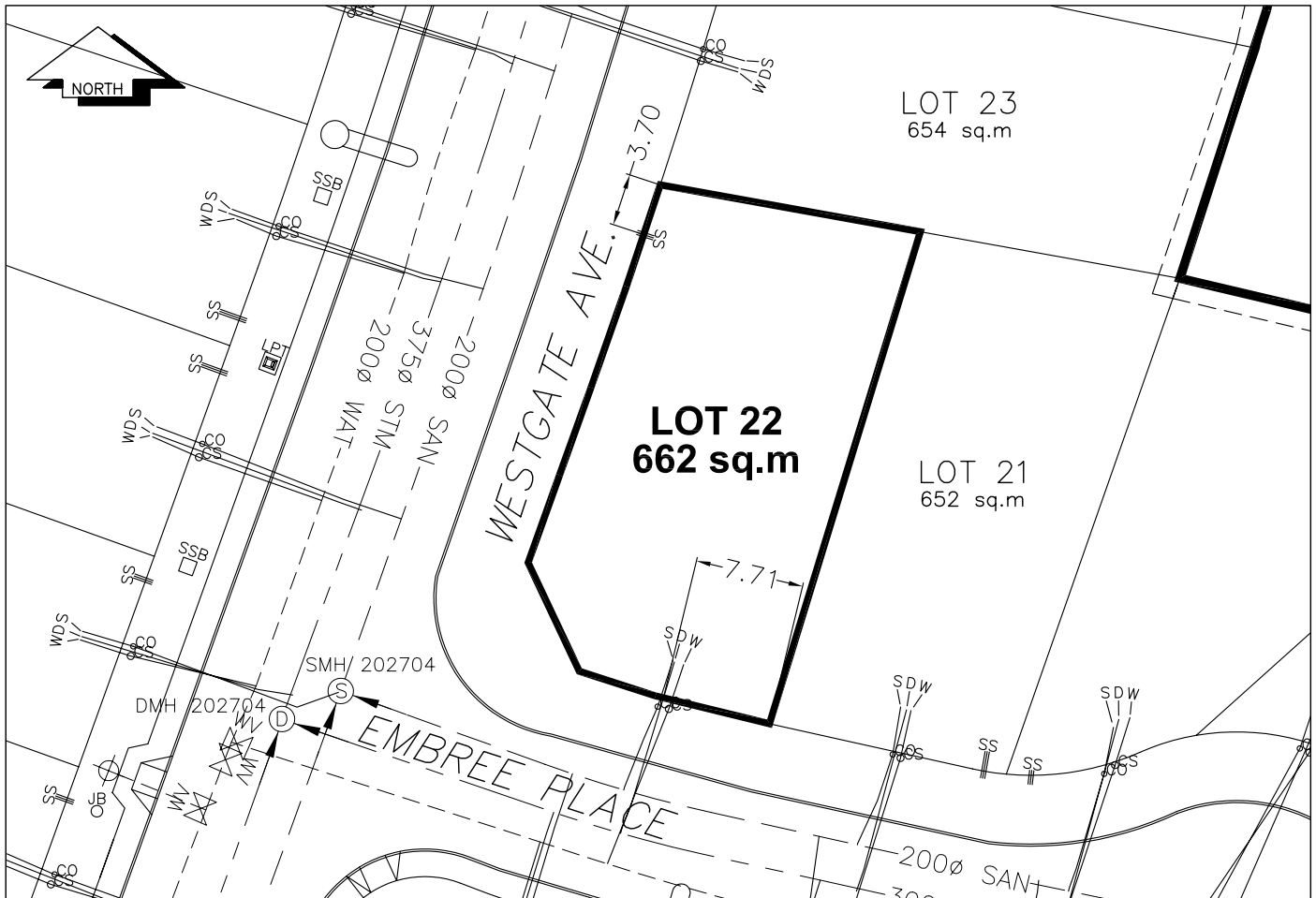


B.C. GAS 42 PROP/P.E.

Information Sheets: REF. DWGS. L&M ENGINEERING LTD. JOB. 1064-16-02 DWGS. (001-306)

Comments: CS₀ CURB STOP SDW WATER SERVICE
CO₀ CLEAN OUT SS STORM SERVICE
SS SHALLOW SERVICES (HYDRO, TELECOMMUNICATIONS, CABLE)

THE INFORMATION CONTAINED HEREIN IS FOR INTERNAL USE ONLY.
NOT TO BE RELIED UPON UNLESS CONFIRMED BY THE SITE INSPECTION AND/OR INVESTIGATION



SANITARY, STORM & WATER SERVICE INVERTS	SANITARY	STORM	WATER
1. Distance from San. M.H.202704 to connection point is19.98 toward San. M.H. 202705		N/A	N/A
1a.Distance from Stm. M.H. 202704 to connection point is23.90 toward Stm. M.H. 202705	N/A		N/A
2. Main Size at connection point is	200mmØ	300mmØ	150mmØ
3. Invert of main at conn. stub pt is	747.71	747.96	749.22
4. Invert at service end is	750.46	750.46	750.50
5. Cut at P/I in meters	2.2m	2.3m	2.3m
6. Survey Date JULY/SEPT 20 05 Book Ref. 1064-16-02 by FORESIGHT			

SANITARY HISTORY:

WATER HISTORY:

STORM HISTORY:
