

# City of Prince George

## HISTORY SHEET

PID: 026421682

Legal: LOT 19

D.L. 1599

PLAN BCP 19756

Address: 3219 EMBREE PLACE

Sanitary Connection:# SIZE: 100mm $\emptyset$  MATERIAL: PVC INV. 749.72m CONNECTED

Water Connection:# SIZE: 19mm $\emptyset$  MATERIAL: COPPER INV. 749.62m METER

Storm Connection:# SIZE: 100mm $\emptyset$  MATERIAL: PVC INV. 749.72m CONNECTED

Cash Receipt No's: WATER SANITARY STORM

CURB FROM PROPERTY LINE 5.0m PAVEMENT WIDTH 10.0m

B.C. HYDRO 75mm DB2 U/G CONNECTION



B.C. TELEPHONE 50mm DB2 U/G CONNECTION

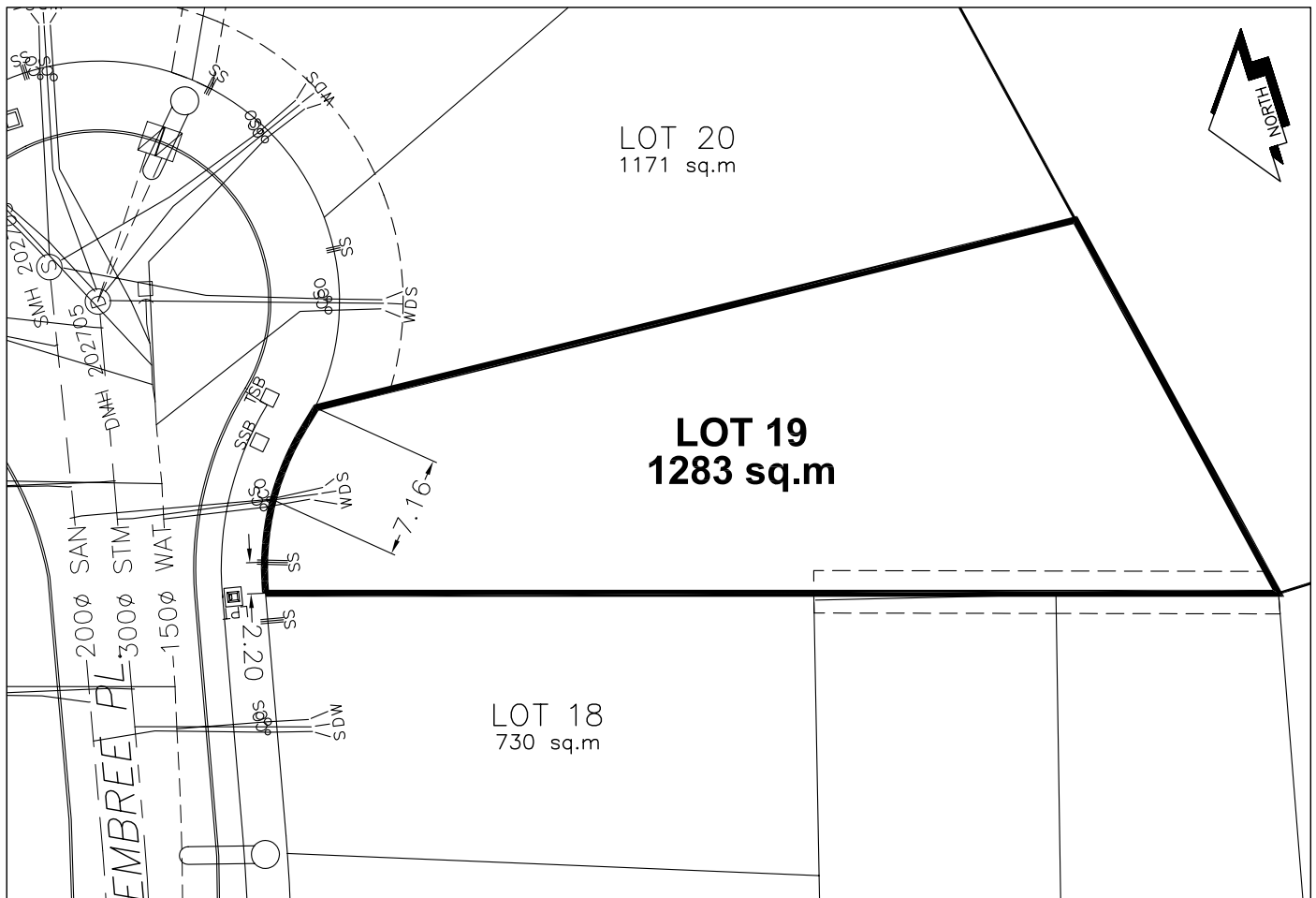


B.C. GAS 42 PROP/P.E.

Information Sheets: REF. DWGS. L&M ENGINEERING LTD. JOB. 1064-16-02 DWGS. (001-306)

Comments: CS<sub>0</sub> CURB STOP SDW WATER SERVICE  
CO<sub>0</sub> CLEAN OUT SDW STORM SERVICE  
SDW SANITARY SERVICE SHALLOW SERVICES (HYDRO, TELECOMMUNICATIONS, CABLE)

THE INFORMATION CONTAINED HEREIN IS FOR INTERNAL USE ONLY.  
NOT TO BE RELIED UPON UNLESS CONFIRMED BY THE SITE INSPECTION AND/OR INVESTIGATION



SANITARY, STORM & WATER SERVICE INVERTS	SANITARY	STORM	WATER
1. Distance from San. M.H.202704 to connection point is 49.28 toward San. M.H. 202705		N/A	N/A
1a.Distance from Stm. M.H. 202704 to connection point is 52.37 toward Stm. M.H. 202705	N/A		N/A
2. Main Size at connection point is	200mmØ	300mmØ	150mmØ
3. Invert of main at conn. stub pt is	748.40	748.41	748.52
4. Invert at service end is	749.72	749.72	749.62
5. Cut at P/I in meters	2.3m	2.2m	2.3m
6. Survey Date JULY/SEPT 20 05 Book Ref. 1064-16-02 by FORESIGHT			

SANITARY HISTORY:

---

---

---

---

---

---

---

---

---

---

---

---

WATER HISTORY:

---

---

---

---

---

---

---

---

---

---

---

---

STORM HISTORY:

---

---

---

---

---

---

---

---

---

---

---

---