

# City of Prince George

## HISTORY SHEET

PID: 026421666

Legal: LOT 17 D.L. 1599 PLAN BCP 19756

Address: 7150 WESTGATE AVENUE / 3203 EMBREE PLACE

Sanitary Connection:# SIZE: 100mmØ MATERIAL: PVC INV. 750.49m CONNECTED

Water Connection:# SIZE: 19mmØ MATERIAL: COPPER INV. 750.47m METER

Storm Connection:# SIZE: 100mmØ MATERIAL: PVC INV. 750.48m CONNECTED

Cash Receipt No's: WATER SANITARY STORM

CURB FROM PROPERTY LINE 5.0m PAVEMENT WIDTH 10.0m

B.C. HYDRO 75mm DB2 U/G CONNECTION ✓

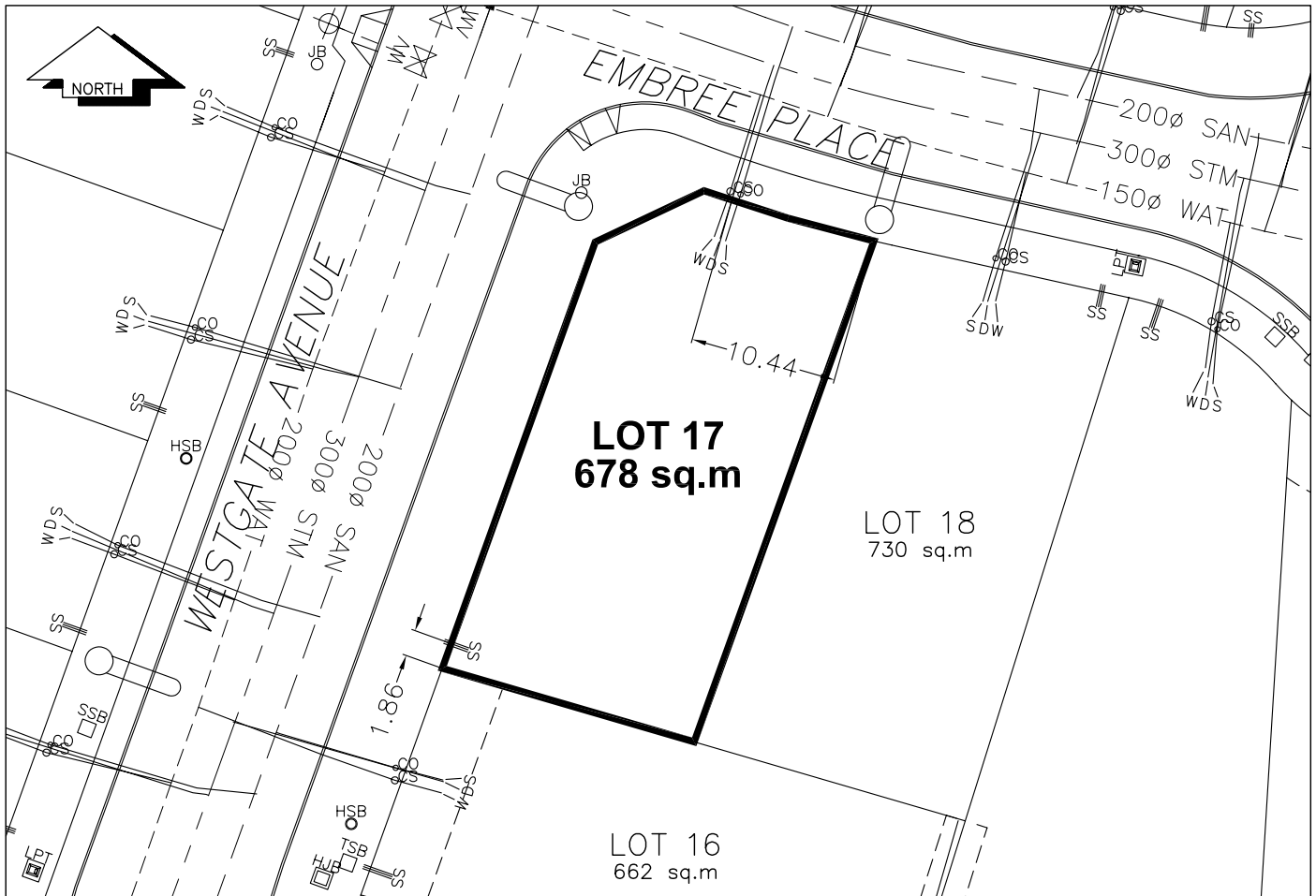
B.C. TELEPHONE 50mm DB2 U/G CONNECTION ✓

B.C. GAS 42 PROP/P.E.

Information Sheets: REF. DWGS. L&M ENGINEERING LTD. JOB. 1064-16-02 DWGS. (001-306)

Comments: CS<sub>0</sub> CURB STOP SDW WATER SERVICE SS SHALLOW SERVICES  
CO<sub>0</sub> CLEAN OUT S SW STORM SERVICE (HYDRO, TELECOMMUNICATIONS, CABLE)  
S SANITARY SERVICE

THE INFORMATION CONTAINED HEREIN IS FOR INTERNAL USE ONLY.  
NOT TO BE RELIED UPON UNLESS CONFIRMED BY THE SITE INSPECTION AND/OR INVESTIGATION



SANITARY, STORM & WATER SERVICE INVERTS	SANITARY	STORM	WATER
1. Distance from San. M.H.202704 to connection point is 16.36 toward San. M.H. 202705		N/A	N/A
1a.Distance from Stm. M.H. 202704 to connection point is 19.18 toward Stm. M.H. 202705	N/A		N/A
2. Main Size at connection point is	200mmØ	300mmØ	150mmØ
3. Invert of main at conn. stub pt is	747.63	747.90	749.34
4. Invert at service end is	750.49	750.48	750.47
5. Cut at P/I in meters	2.3m	2.3m	2.3m
6. Survey Date JULY/SEPT 20 05 Book Ref. 1064-16-02 by FORESIGHT			

SANITARY HISTORY:

---

---

---

---

---

---

---

---

---

---

---

---

WATER HISTORY:

---

---

---

---

---

---

---

---

---

---

---

---

STORM HISTORY:

---

---

---

---

---

---

---

---

---

---

---

---