

City of Prince George

HISTORY SHEET

PID: 026421585

Legal: LOT 9 D.L. 1599 PLAN BCP 19756

Address: 7149 WESTGATE AVENUE

Sanitary Connection:# SIZE: 100mm \emptyset MATERIAL: PVC INV. 750.83m CONNECTED

Water Connection:# SIZE: 19mm \emptyset MATERIAL: COPPER INV. 750.83m METER

Storm Connection:# SIZE: 100mm \emptyset MATERIAL: PVC INV. 750.84m CONNECTED

Cash Receipt No's: WATER SANITARY STORM

CURB FROM PROPERTY LINE 6.0m PAVEMENT WIDTH 13.0m

B.C. HYDRO 75mm DB2 U/G CONNECTION ☒

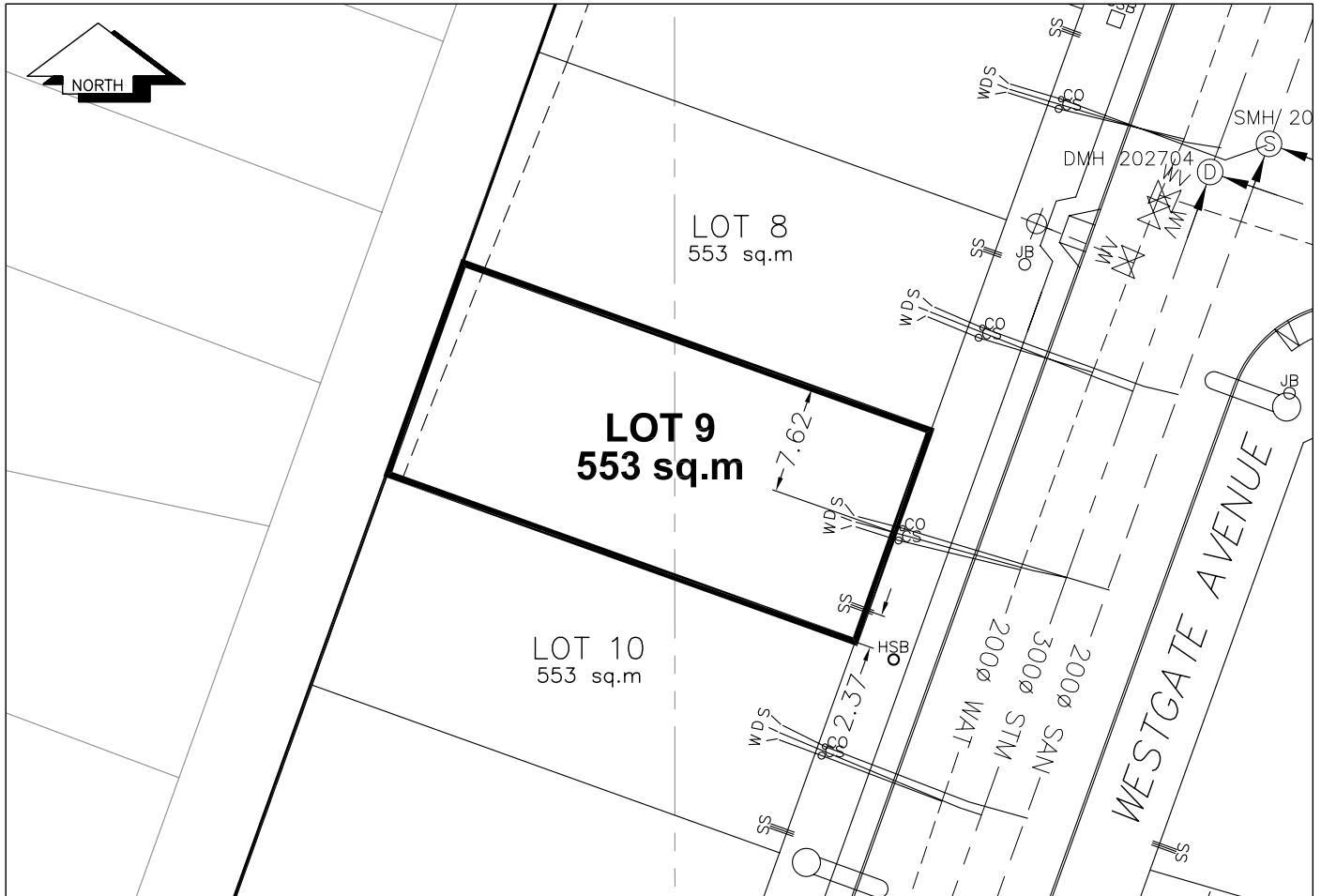
B.C. TELEPHONE 50mm DB2 U/G CONNECTION ☒

B.C. GAS 42 PROP/P.E.

Information Sheets: REF. DWGS. L&M ENGINEERING LTD. JOB. 1064-16-02 DWGS. (001-306)

Comments: CS_O CURB STOP SOW WATER SERVICE SHALLOW SERVICES
CO_O CLEAN OUT SOW STORM SERVICE (HYDRO, TELECOMMUNICATIONS, CABLE)
SOW SANITARY SERVICE

THE INFORMATION CONTAINED HEREIN IS FOR INTERNAL USE ONLY.
NOT TO BE RELIED UPON UNLESS CONFIRMED BY THE SITE INSPECTION AND/OR INVESTIGATION



SANITARY, STORM & WATER SERVICE INVERTS	SANITARY	STORM	WATER
1. Distance from San. M.H.202704 to connection point is 31.45 toward San. M.H. 201701		N/A	N/A
1a.Distance from Stm. M.H. 202704 to connection point is 28.61 toward Stm. M.H. 201701	N/A		N/A
2. Main Size at connection point is	200mmØ	300mmØ	200mmØ
3. Invert of main at conn. stub pt is	747.58	747.79	749.33
4. Invert at service end is	750.83	750.84	750.83
5. Cut at P/I in meters	2.3m	2.3m	2.3m
6. Survey Date JULY/SEPT 20 05 Book Ref. 1064-16-02 by FORESIGHT			

SANITARY HISTORY:

WATER HISTORY:

STORM HISTORY:
