



PID:	025927868
SD:	100561
WO:	

Civic Address: 2540, 2544 Recplace Dr

Legal Description: Remainder of Parcel 1 District Lots: 8173, 8176, 8179 & 8180 PL Plan: BCP10189

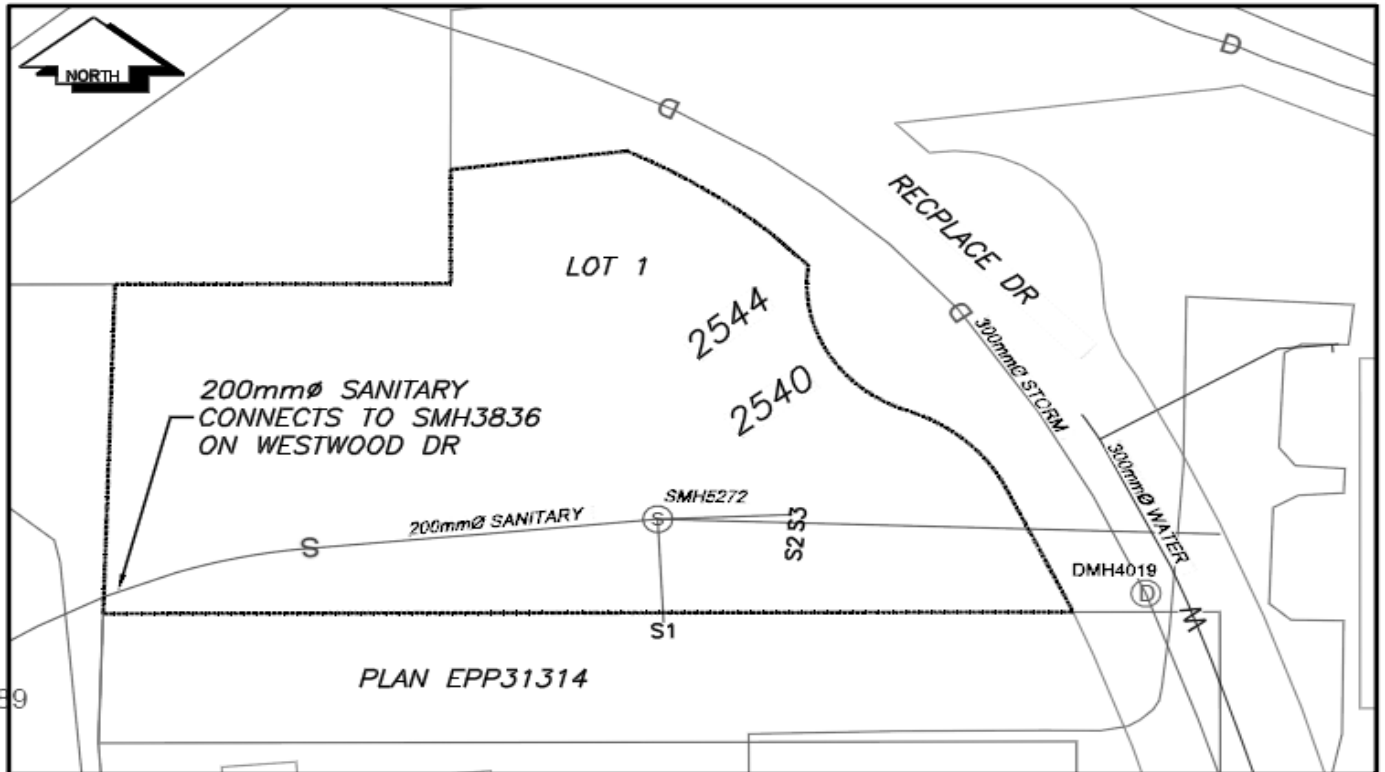
Service Type	Diameter (mm)	Material	Invert Elev at main (m)	Invert Elev at property line (m)	Invert Elev at service end (m)	Distance into property (m)	Installation Date
Sanitary - S1	100mm	PVC	-	-	-	-	December 1981
Sanitary - S2	100mm	PVC	-	-	-	-	December 1981
Sanitary -S3	100mm	PVC	-	-	-	-	December 1981
Sanitary -S4	100mm	PVC	-	-	-	-	December 2002
Water -W1	50mm	Copper	-	-	-	-	December 2002
Storm	N/A	N/A	-	-	-	-	

Service Connection Location					Sanitary (m)	Storm (m)
Distance from downstream San MH	-	towards upstream San MH	-	-	-	
Distance from downstream Stm MH	-	towards upstream Stm MH	-	-		

Power	Size	Communications	Size	Cable	Size	Gas	Size
BC Hydro	-	Telus	-	Shaw	-	FortisBC	-
Overhead Service		Overhead Service		Overhead Service			

Installed by:	Survey Date:	-
Comments: (3) 100mm Sanitary services connect to SMH5272. 300mm Storm main runs through property - no services.		

**NOT TO SCALE** The information contained herein is for internal use only.  
Not to be relied on unless confirmed by site inspection and/or investigation.



CS <sup>o</sup> CURB STOP	—W— WATER SERVICE	—S— STORM SERVICE
CO <sup>o</sup> CLEAN OUT	—S— SANITARY SERVICE	—G— GAS
⊗ WATER VALVE	⊗ FIRE HYDRANT	--- ENCUMBRANCE

**NOT TO SCALE**



City of Prince George  
**History Sheet**  
 Page 2 of 2

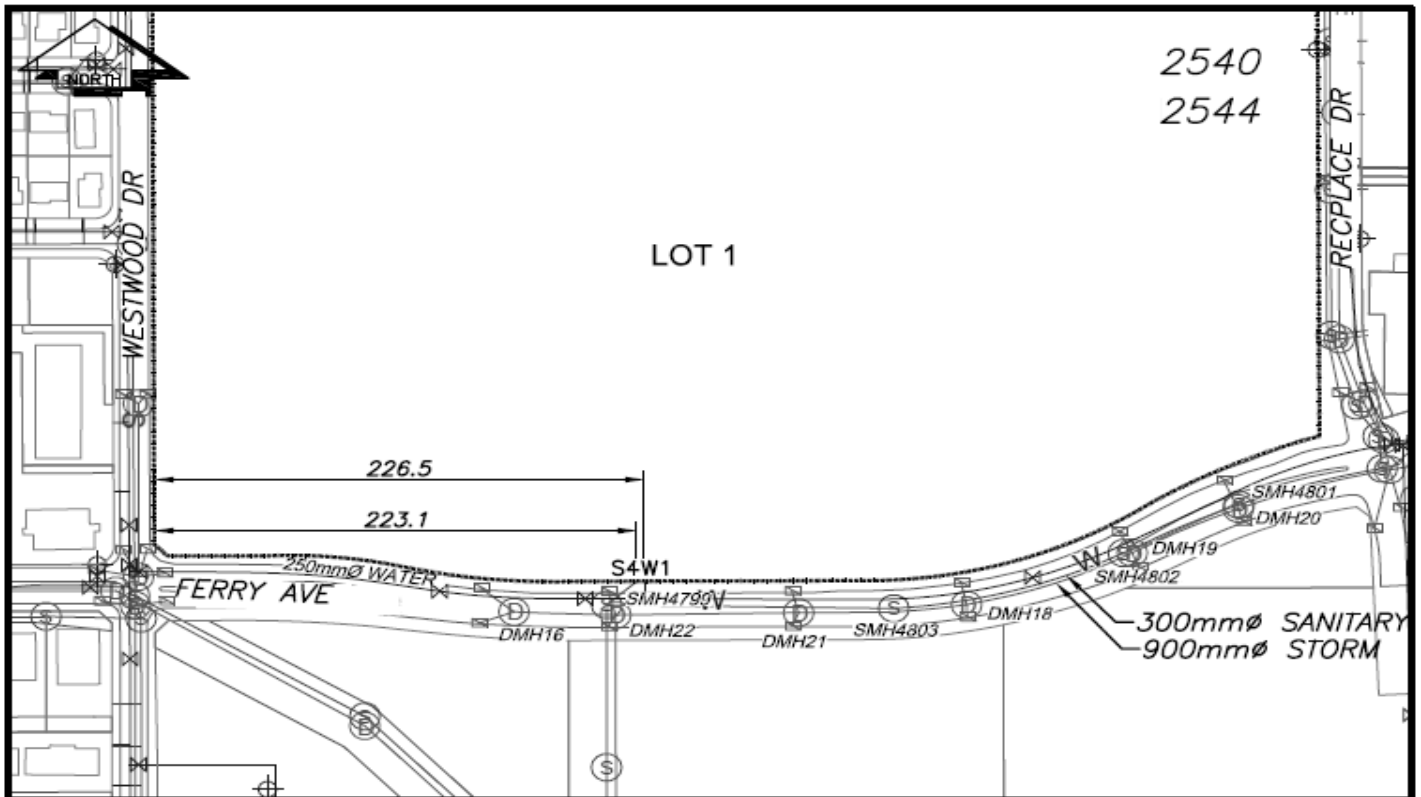
PID:	025927868
SD:	100561
WO:	

Civic Address: 2540, 2544 Recplace Dr

Legal Description: Remainder of Parcel 1 District Lots: 8173, 8176, 8179 & 8180 PL Plan: BCP10189

Installed by:		
Comments:		

**NOT TO SCALE** The information contained herein is for internal use only.  
 Not to be relied on unless confirmed by site inspection and/or investigation.



LEGEND:	CS	CURB STOP	—	WATER SERVICE	—	STORM SERVICE
	CO	CLEAN OUT	- - -	SANITARY SERVICE	— G —	GAS
	⊗	WATER VALVE	⊗	FIRE HYDRANT	- - -	ENCUMBRANCE

**NOT TO SCALE**