



City of Prince George History Sheet

PID:	025153668
MU:	
WO:	

Civic Address: 2360 Laurier Cres
2130, 2170 10th Ave

Legal Description: Lot: 2 District Lot: 343 Plan: PGP47151

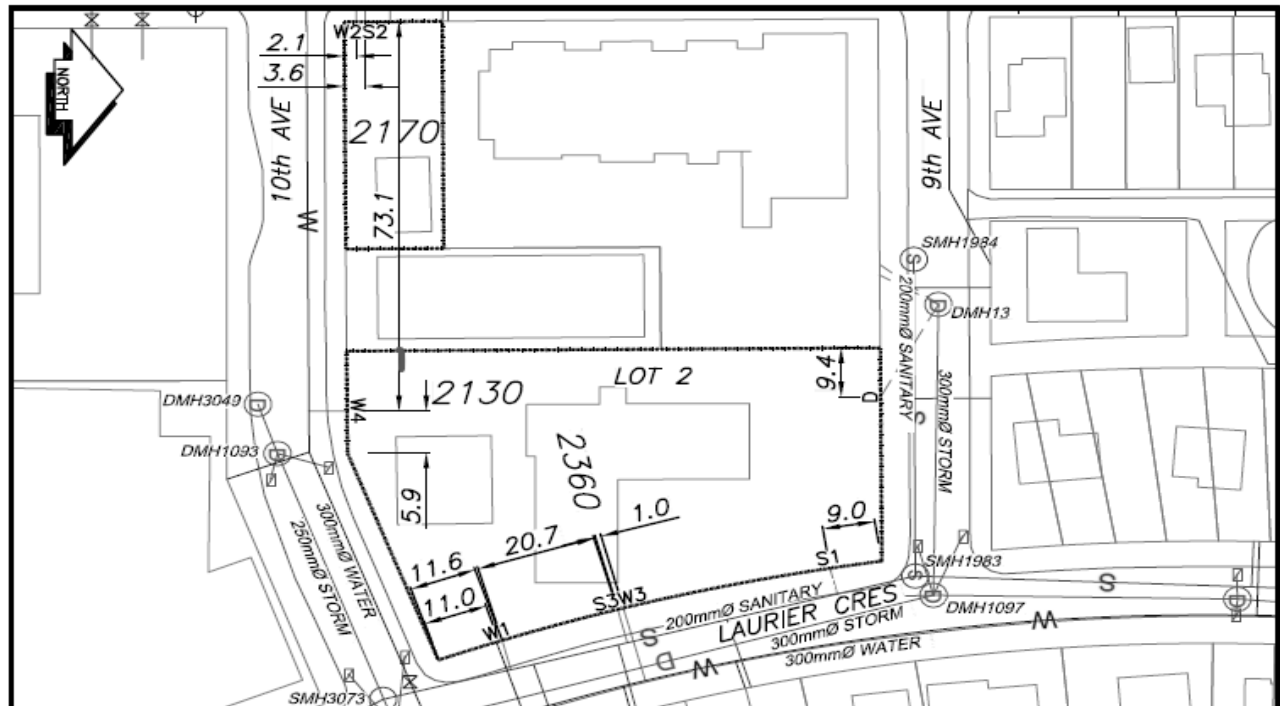
Service Type	Diameter (mm)	Material	Invert Elev at main (m)	Invert Elev at property line (m)	Invert Elev at service end (m)	Distance into property (m)	Installation Date
Sanitary (S1)	150mm	AC	-	-	-	-	October 1958
Sanitary (S2)	150mm	AC	-	-	-	-	October 1958
Sanitary (S3)	100mm	AC	-	-	-	-	October 1958
Water (W1)	150mm	PVC	-	-	-	-	October 1958
Water (W2)	150mm	PVC	-	-	-	-	October 1958
Water (W3)	20mm	Copper	-	-	-	-	March 1958
Water (W4)	50mm	Copper	-	-	-	-	December 1956
Storm	200mm	PVC	-	-	-	-	December 1959

Service Connection Location				Sanitary (m)	Storm (m)
Distance from downstream San MH	3073	towards upstream San MH	1983	80.33	
150mm Sanitary service connected to San MH on Alward St					
Distance from downstream San MH	3073	towards upstream San MH	1983	42.95	
200mm Storm service connected to Stm MH13					

Power	Size	Communications	Size	Cable	Size	Gas	Size
BC Hydro	-	Telus	-	Shaw	-	FortisBC	-
Overhead Service		Overhead Service		Overhead Service			

Installed by:		Survey Date:	-
Comments:	Water service location confirmed July 16, 2019		

NOT TO SCALE The information contained herein is for internal use only.
Not to be relied on unless confirmed by site inspection and/or investigation.



CS ^o CURB STOP	— WATER SERVICE	— STORM SERVICE
CO ^o CLEAN OUT	- - - - - SANITARY SERVICE	— G — GAS
⊗ WATER VALVE	⊗ FIRE HYDRANT	- - - - - ENCUMBRANCE

NOT TO SCALE