

City of Prince George HISTORY SHEET

SHEET NUMBER 16 OF 18

ROLL NUMBER 023970103

Legal: LOT 16 BLK D.L. 4048 PLAN PGP41855

Address: 4650
#- GRAY DRIVE

Sanitary Connection: # SIZE: 100mmø MATERIAL: PVC INV. 761.61m CONN

Water Connection: # FROM MAIN: 19mmø COPPER METER

Storm Connection: # SIZE 100mmø MATERIAL PVC INV. 761.62m CONN

Cash Receipt No's: WATER SANITARY STORM

CURB FROM PROPERTY LINE 5.0m PAVEMENT WIDTH

B.C. HYDRO 75mm øDB2 U/G CONNECTION

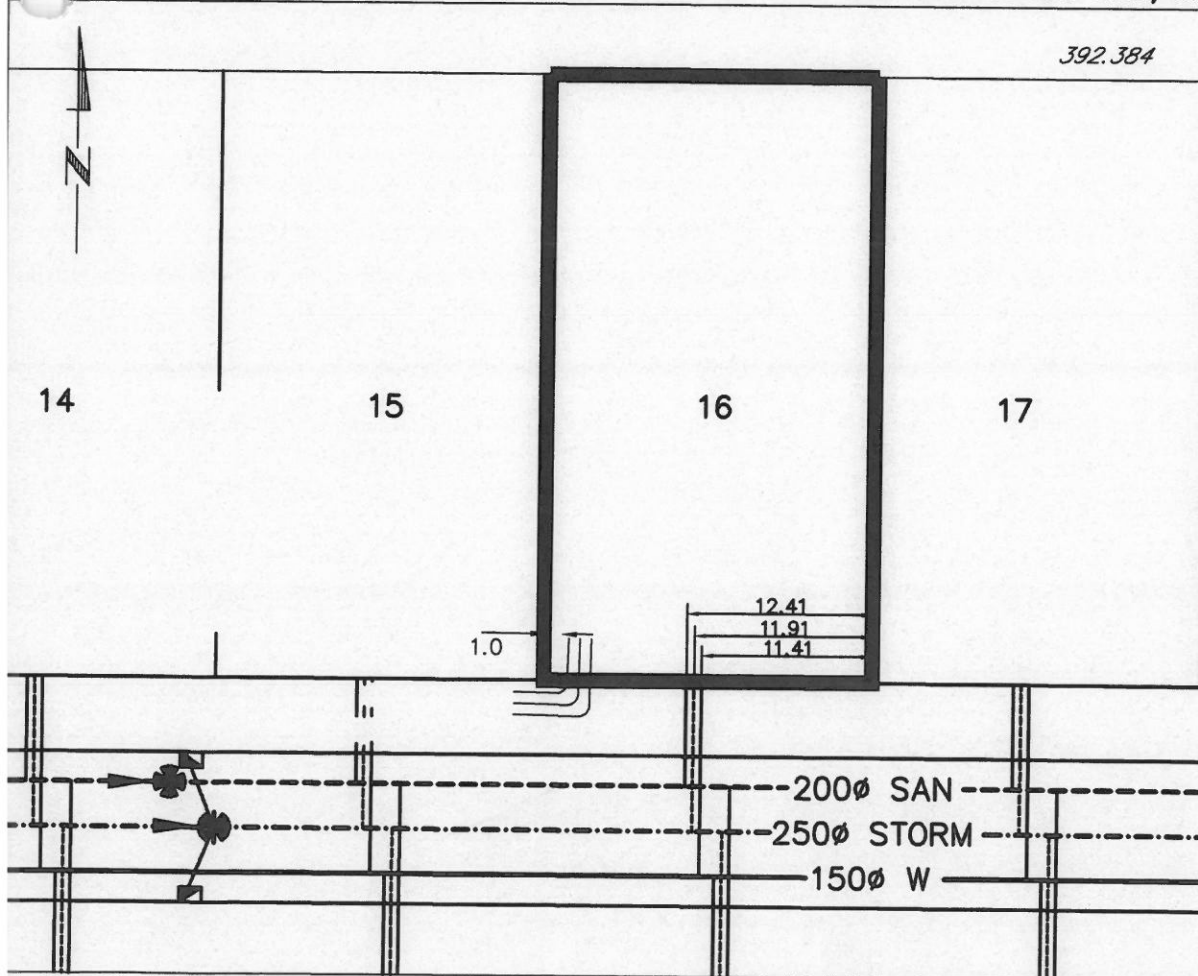
B.C. TELEPHONE 50mmø PVC U/G CONNECTION

B.C. GAS 42mmø PE SDR10

Information Sheets: REF. DWGS. L&M ENGINEERING LTD. JOB. 1063-05-02

Comments: BENCH MARK: 86H-1856 766.416m

THE INFORMATION CONTAINED HEREIN IS FOR INTERNAL USE ONLY.
NOT TO BE RELIED UPON UNLESS CONFIRMED BY THE SITE INSPECTION AND/OR



SANITARY & STORM INVERT CALCULATIONS			SANITARY	
1. Distance from San. M.H. 4	to connection point is	toward San. M.H. 3	34.5	
1a. Distance from Stm. M.H. 4	to connection point is	toward Stm. M.H. 3		
2. Calculated invert of main at conn. stub pt is			760.85	
3. Main Size at connection point is			200mm ϕ	
4. Conn. invert at half diameter (Crown) of main is			760.95	
5. Add to (4) allowance of 0.2 for 1/8 bend adjusted invert now			N/A	
6. Dist. from main to P/L equalsm at% gives rise of			7m @ 10.1% = 0.71m Rise	
7. Item (5) plus (6) equals Calculated Elev. of conn. inv. at P/L equals				
13. Elev. of ref. hub top				766.416
14. of invert at P/line			761.61	
15. Difference of cut below at property line			2.50	
16. Survey Date	SEPT 19 97	Book Ref. N/A by V.G.		
17. Cut at P/line in feet and inches			8'2"	

This image shows a single sheet of white paper with horizontal blue or grey ruling lines. The lines are evenly spaced and run across the width of the page. On the left edge, there is a small, light-colored circular object, possibly a hole punch or a piece of tape. The paper appears to be part of a notebook or a binder.

This image shows a single sheet of white paper with horizontal blue or grey ruling lines, typical of notebook paper. The lines are evenly spaced and run across the width of the page. There is no handwriting or other markings on the paper.
