

# City of Prince George HISTORY SHEET

SHEET NUMBER 15 OF 18

ROLL NUMBER 023970090

Legal: LOT 15 BLK D.L. 4048 PLAN PGP41855

Address: 4662 GRAY DRIVE

Sanitary Connection: # SIZE: 100mmø MATERIAL: PVC INV. 762.01m CONNECTED

Water Connection: # FROM MAIN: 19mmø COPPER METER

Storm Connection: # SIZE 100mmø MATERIAL PVC INV. 762.20m CONNECTED

Cash Receipt No's: WATER SANITARY STORM

CURB FROM PROPERTY LINE 5.0m PAVEMENT WIDTH 10.0m

B.C. HYDRO 75mmø DB2 U/G CONNECTION

B.C. TELEPHONE 50mmø PVC U/G CONNECTION

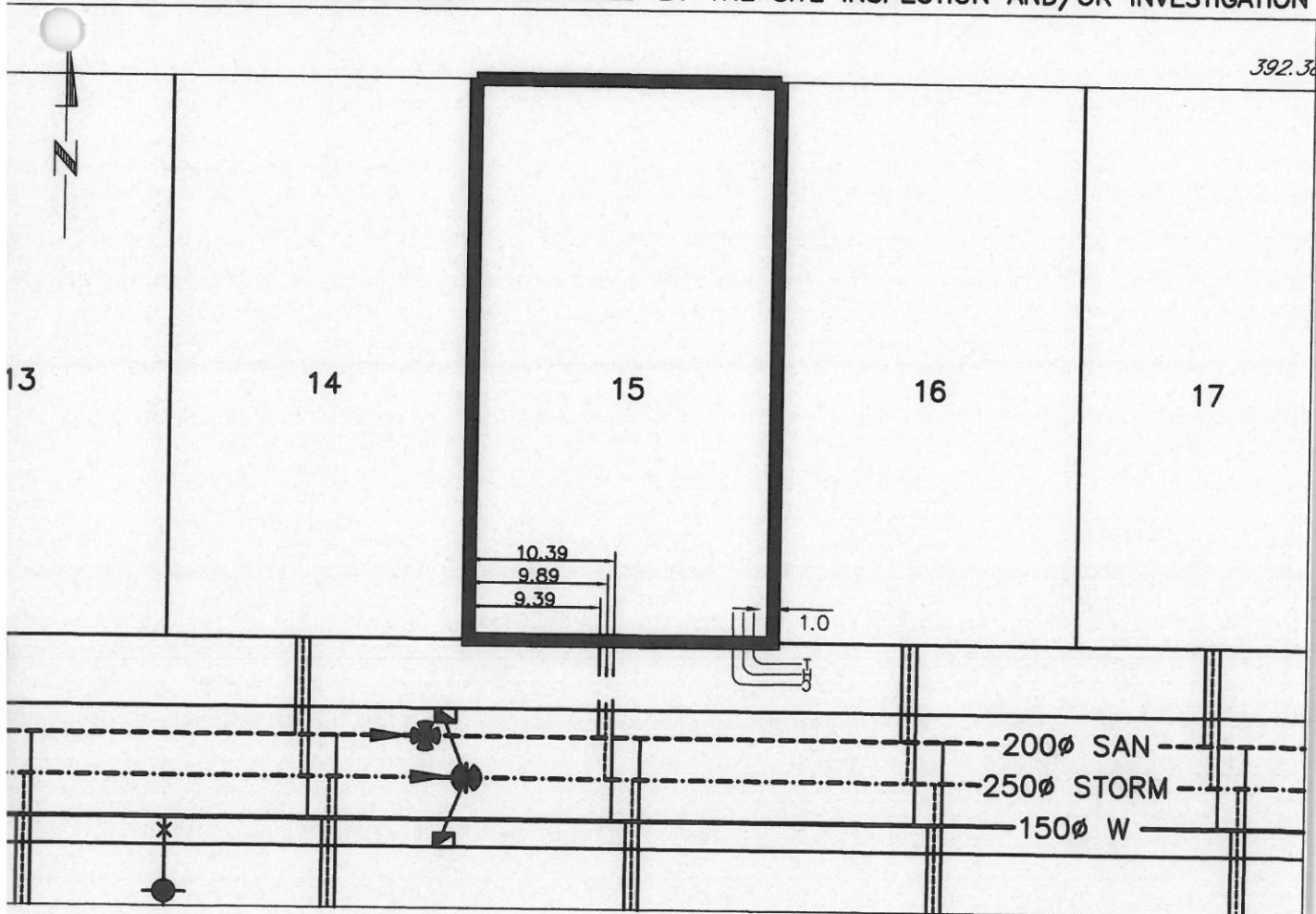
B.C. GAS 42mmø PE SDR10

Information Sheets: REF. DWGS. L&M ENGINEERING LTD. JOB. 1063-05-02

Comments: BENCH MARK: 86H-1856 766.416m

THE INFORMATION CONTAINED HEREIN IS FOR INTERNAL USE ONLY.

NOT TO BE RELIED UPON UNLESS CONFIRMED BY THE SITE INSPECTION AND/OR INVESTIGATION



SANITARY & STORM INVERT CALCULATIONS				SANITARY	STORM
1. Distance from San. M.H. 4	to connection point is	toward San. M.H. 3		13.0	
1a. Distance from Stm. M.H. 4	to connection point is	toward Stm. M.H. 3			9.9
2. Calculated invert of main at conn. stub pt is				761.37	761.76
3. Main Size at connection point is				200mmø	250mmø
4. Conn. invert at half diameter (Crown) of main is				761.47	761.88
5. Add to (4) allowance of 0.2 for 1/8 bend adjusted invert now				N/A	N/A
6. Dist. from main to P/L equals .....m at .....% gives rise of				7m @ 8.4% = 0.59m Rise	10m @ 3.6% = 0.36m Rise
7. Item (5) plus (6) equals Calculated Elev. of conn. inv. at P/L equals					
13. Elev. of ref. hub top					766.416
14. Elev. of invert at P/line				762.00	762.20
15. Difference of cut below at property line				2.55	2.36
16. Survey Date	SEPT	19 97	Book Ref. N/A by V.G.		
17. Cut at P/line in feet and inches				8'5"	7'9"

## This image shows a single sheet of white paper with horizontal blue or grey ruling lines. On the left edge, there is a circular punch hole, suggesting it was part of a binder. The paper is otherwise blank, with no writing or markings other than the printed lines.

## This image shows a single sheet of white paper with horizontal blue or grey ruling lines, typical of notebook paper. The lines are evenly spaced and run across the width of the page. There is no handwriting or other markings on the paper.

[illegible]