

City of Prince George

HISTORY SHEET

SHEET NUMBER 11 OF 18

ROLL NUMBER 023970057

Legal: LOT 11 BLK D.L. 4048 PLAN PG P41855

Address: 4710 GRAY DRIVE

Sanitary Connection:# SIZE: 100mm ϕ MATERIAL: PVC INV. 764.19m CONNECTED

Water Connection:# FROM MAIN: 19mm ϕ COPPER METER

Storm Connection:# SIZE 100mm ϕ MATERIAL PVC INV. 764.39m CONNECTED

Cash Receipt No's: WATER SANITARY STORM

CURB FROM PROPERTY LINE 5.0m PAVEMENT WIDTH 10.0m

B.C. HYDRO 75mm ϕ DB2 U/G CONNECTION

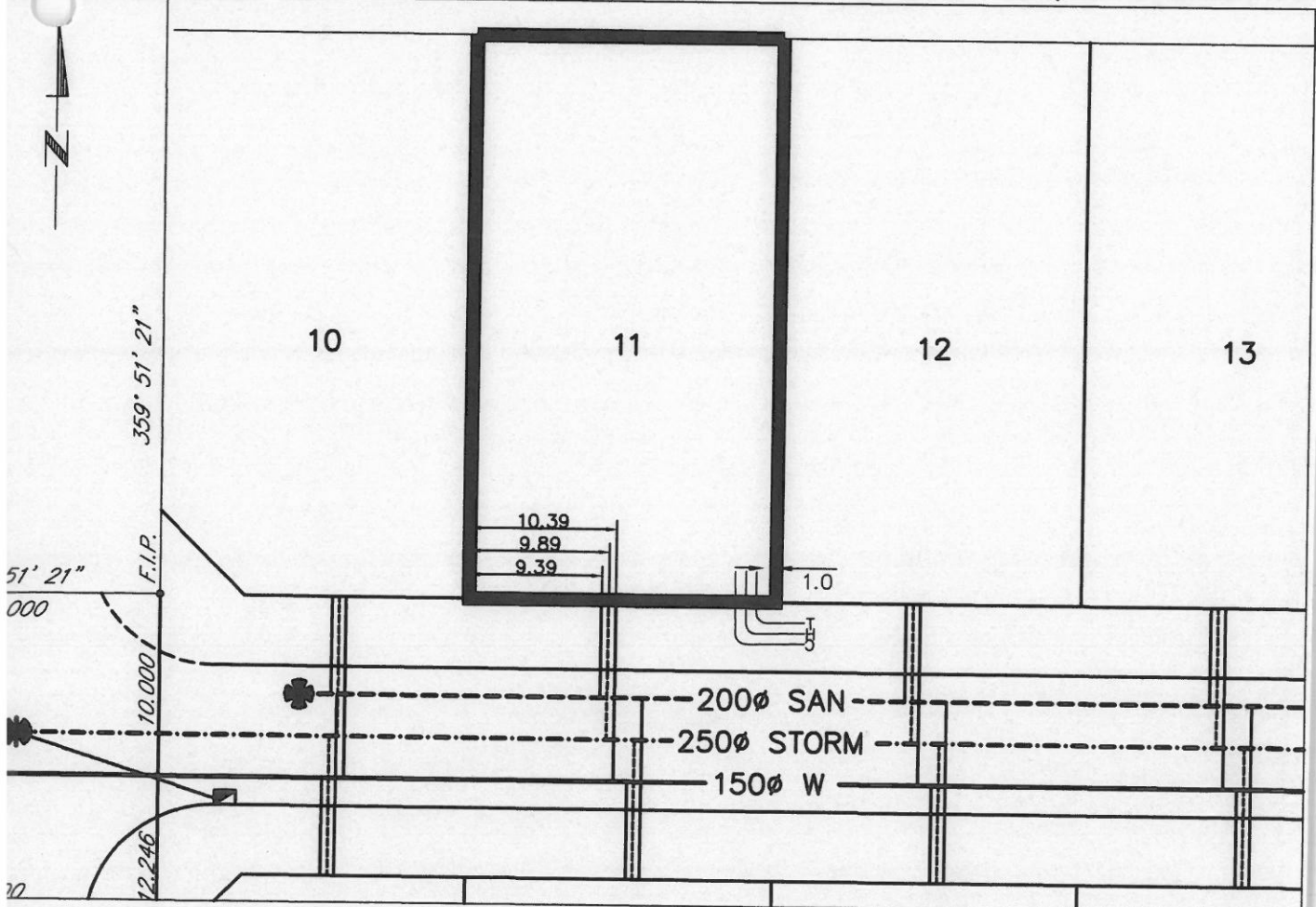
B.C. TELEPHONE 50mm ϕ PVC U/G CONNECTION

B.C. GAS 42mm ϕ PE SDR10

Information Sheets: REF. DWGS. L&M ENGINEERING LTD. JOB. 1063-05-02

Comments: BENCH MARK: 86H-1856 766.416m

THE INFORMATION CONTAINED HEREIN IS FOR INTERNAL USE ONLY.
NOT TO BE RELIED UPON UNLESS CONFIRMED BY THE SITE INSPECTION AND/OR INVESTIGATION



SANITARY & STORM INVERT CALCULATIONS			SANITARY		STORM
1. Distance from San. M.H.5	to connection point is	toward San. M.H.4	21.2		
1a. Distance from Stm. M.H.5	to connection point is	toward Stm. M.H.4			41.6
2. Calculated invert of main at conn. stub pt is			763.44		763.84
3. Main Size at connection point is			200mmØ		250mmØ
4. Conn. invert at half diameter (Crown) of main is			763.54		763.96
5. Add to (4) allowance of 0.2 for 1/8 bend adjusted invert now			N/A		N/A
6. Dist. from main to P/L equalsm at% gives rise of			7m @ 11.4% = 0.80m Rise		10m @ 4.3% = 0.43m Rise
7. Item (5) plus (6) equals Calculated Elev. of conn. inv. at P/L equals					
13. Elev. of ref. hub top				766.416	
14. of invert at P/line			764.19		764.39
15. Difference of cut below at property line			2.47		2.27
16. Survey Date	SEPT 19 97	Book Ref. N/A by V.G.			
17. Cut at P/line in feet and inches			8'1"		7'5"

This image shows a single sheet of white paper with horizontal blue or grey ruling lines. The lines are evenly spaced and run across the width of the page. On the left side, there is a small, light-colored circular object, possibly a hole punch or a piece of tape. The paper appears to be part of a notebook or a binder.

This image shows a single sheet of white paper with horizontal blue or grey ruling lines. The lines are evenly spaced and run across the width of the page. There is no handwriting or other markings on the paper.

[illegible]