

# City of Prince George HISTORY SHEET

SHEET NUMBER 10 OF 18

ROLL NUMBER 023970049

Legal: LOT 10

BLK

D.L. 4048

PLAN P6741855

Address: 4722 GRAY DRIVE

Sanitary Connection: # SIZE: 100mmø MATERIAL: PVC INV. 764.79m CONNECTED

Water Connection: # FROM MAIN: 19mmø COPPER METER

Storm Connection: # SIZE 100mmø MATERIAL PVC INV. 764.80m CONNECTED

Conn Receipt No's: WATER SANITARY STORM

CURB FROM PROPERTY LINE 5.0m

PAVEMENT WIDTH 10.0m

B.C. HYDRO 75mmø DB2 U/G CONNECTION

B.C. TELEPHONE 50mmø PVC U/G CONNECTION

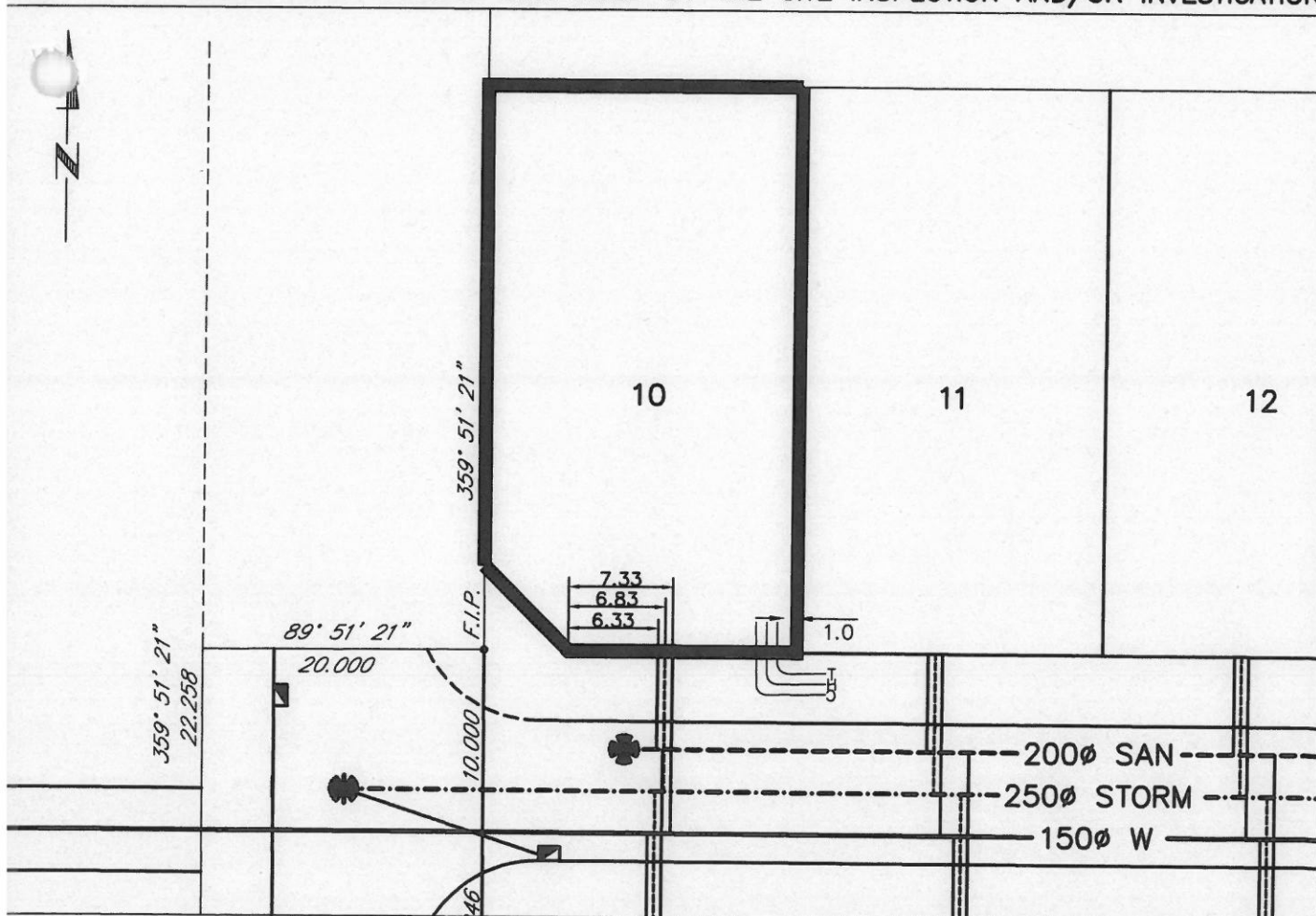
B.C. GAS 42mmø PE SDR10

Information Sheets: REF. DWGS. L&M ENGINEERING LTD. JOB. 1063-05-02

Comments: BENCH MARK: 86H-1856 766.416m

THE INFORMATION CONTAINED HEREIN IS FOR INTERNAL USE ONLY.

NOT TO BE RELIED UPON UNLESS CONFIRMED BY THE SITE INSPECTION AND/OR INVESTIGATION



SANITARY & STORM INVERT CALCULATIONS	SANITARY		STORM
1. Distance from San. M.H. 5 to connection point is toward San. M.H. 4	1.2		
1a. Distance from Stm. M.H. 5 to connection point is toward Stm. M.H. 4			21.5
2. Calculated invert of main at conn. stub pt is	763.91		764.32
3. Main Size at connection point is	200mm $\phi$		250mm $\phi$
4. Conn. invert at half diameter (Crown) of main is	764.01		764.44
5. Add to (4) allowance of 0.2 for 1/8 bend adjusted invert now	N/A		N/A
6. Dist. from main to P/L equals .....m at .....% gives rise of	7m @ 11.9% = 0.83m Rise		10m @ 9.4% = 0.94m Rise
7. Item (5) plus (6) equals Calculated Elev. of conn. inv. at P/L equals			
13. Elev. of ref. hub top		766.614	
14. Elev. of invert at P/line	764.79		764.8
15. Difference of cut below at property line	2.41		2.40
16. Survey Date <b>SEPT</b> 19 <b>97</b> Book Ref. <b>N/A</b> by <b>V.G.</b>			
17. Cut at P/line in feet and inches	7'11"		7'10"

**SANITARY HISTORY:**

**WATER HISTORY:**

STORM HISTORY: