

City of Prince George  
HISTORY SHEET

SHEET NUMBER 9 OF 18 (lot 27)

ROLL NUMBER 023970031

Legal: LOT 9 BLK D.L. 4048 PLAN PGP41855

Address: ~~4721 GRAY DRIVE~~ 7070 Heather Park Rd

Sanitary Connection: # SIZE: 100mm MATERIAL: PVC INV. 764.95m CONNECTED

Water Connection: # FROM MAIN: 19mm COPPER METER

Storm Connection: # SIZE 100mm MATERIAL PVC INV. 764.93m CONNECTED

Cash Receipt No's: WATER SANITARY STORM

CURB FROM PROPERTY LINE 5.0m PAVEMENT WIDTH 10.0m

B.C. HYDRO 75mm DB2 U/G CONNECTION

B.C. TELEPHONE 50mm PVC U/G CONNECTION

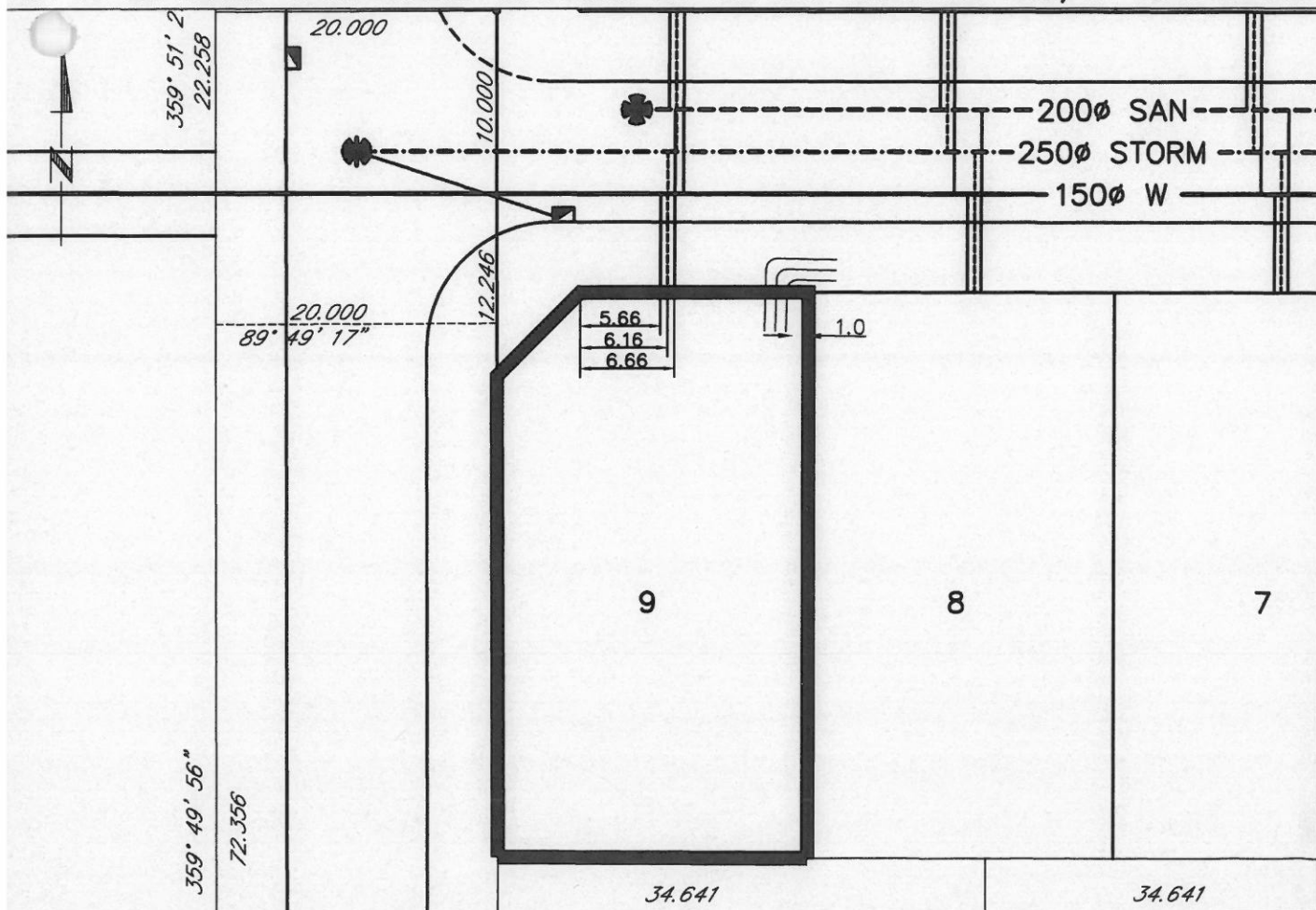
B.C. GAS 42mm PE SDR10

Information Sheets: REF. DWGS. L&M ENGINEERING LTD. JOB. 1063-05-02

Comments: BENCH MARK: 86H-1856 766.416m

THE INFORMATION CONTAINED HEREIN IS FOR INTERNAL USE ONLY.

NOT TO BE RELIED UPON UNLESS CONFIRMED BY THE SITE INSPECTION AND/OR INVESTIGATION



SANITARY & STORM INVERT CALCULATIONS	SANITARY		STORM
1. Distance from San. M.H.5 to connection point is toward San. M.H.4	1.9		
1a. Distance from Stm. M.H.5 to connection point is toward Stm. M.H.4			22.2
2. Calculated invert of main at conn. stub pt is	763.90		764.30
3. Main Size at connection point is	200mm $\phi$		250mm $\phi$
4. Conn. invert at half diameter (Crown) of main is	764.00		764.42
5. Add to (4) allowance of 0.2 for 1/8 bend adjusted invert now	N/A		N/A
6. Dist. from main to P/L equals .....m at .....% gives rise of	13m @ 7.7% = 1.00m Rise		10m @ 5.7% = 0.57m Rise
7. Item (5) plus (6) equals Calculated Elev. of conn. inv. at P/L equals			
13. Elev. of ref. hub top		766.416	
14. Invert of invert at P/line	764.95		764.93
15. Difference of cut below at property line	2.10		2.11
16. Survey Date <b>SEPT</b> 19 <b>97</b> Book Ref. <b>N/A</b> by <b>V.G.</b>			
17. Cut at P/line in feet and inches	6'11"		6'11"

**SANITARY HISTORY:**

**WATER HISTORY:**

STORM HISTORY: