

City of Prince George HISTORY SHEET

SHEET NUMBER 8 OF 18

ROLL NUMBER 023910022

Legal: LOT 8 BLK D.L. 4048 PLAN PG741855

Address: 4709 GRAY DRIVE

Sanitary Connection:# SIZE: 100mmø MATERIAL: PVC INV. 764.35m CONNECTE

Water Connection:# FROM MAIN: 19mmø COPPER METER

Storm Connection:# SIZE 100mmø MATERIAL PVC INV. 764.32m CONNECTE

Cash Receipt No's: WATER SANITARY STORM

CURB FROM PROPERTY LINE 5.0m PAVEMENT WIDTH 10.

B.C. HYDRO 75mmø DB2 U/G CONNECTION

B.C. TELEPHONE 50mmø PVC U/G CONNECTION

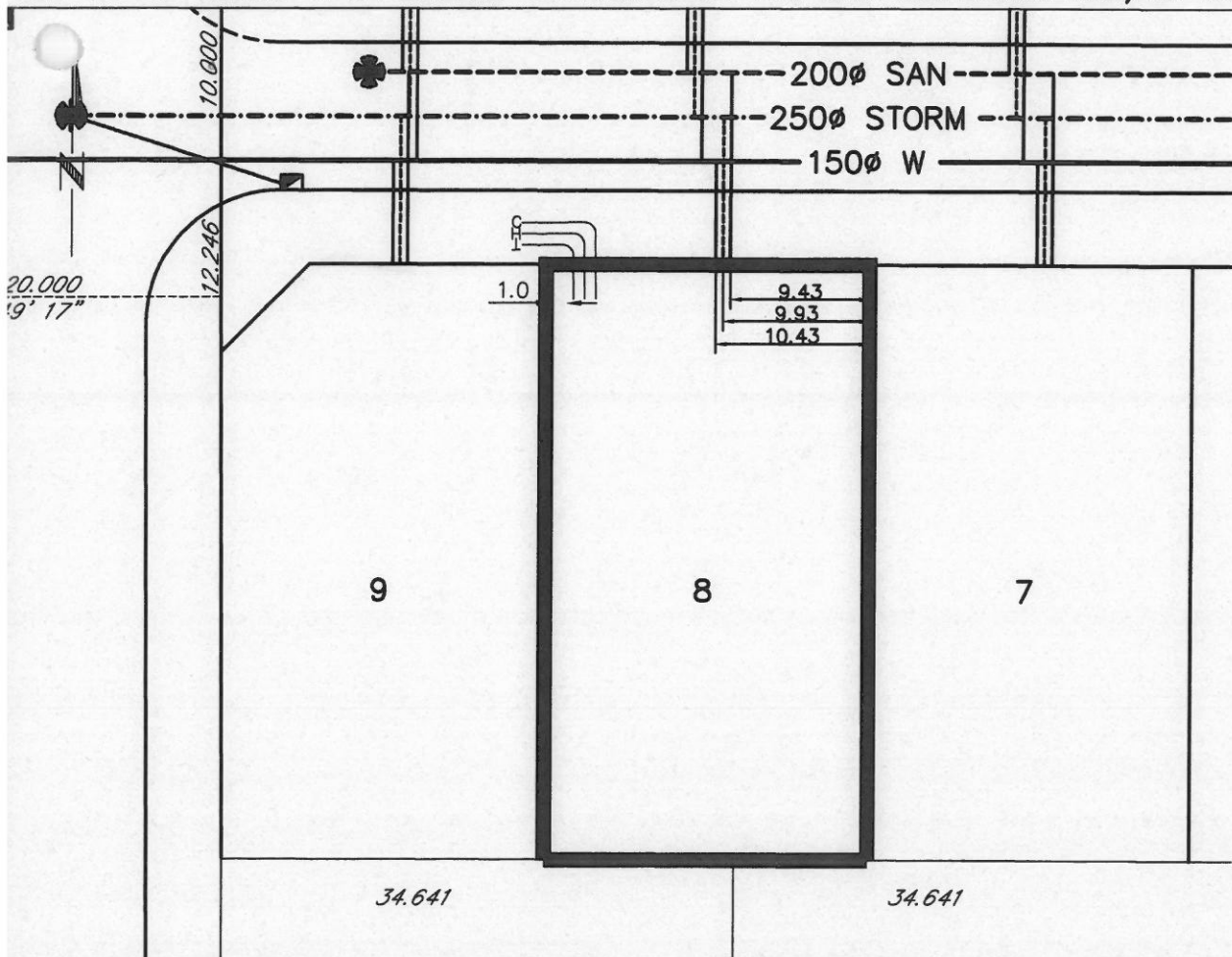
B.C. GAS 42mmø PE SDR10

Information Sheets: REF. DWGS. L&M ENGINEERING LTD. JOB. 1063-05-02

Comments: BENCH MARK: 86H-1856 766.416m

THE INFORMATION CONTAINED HEREIN IS FOR INTERNAL USE ONLY.

NOT TO BE RELIED UPON UNLESS CONFIRMED BY THE SITE INSPECTION AND/OR INV



SANITARY & STORM INVERT CALCULATIONS			SANITARY	
1. Distance from San. M.H. 5	to connection point is	toward San. M.H. 4	23.6	
1a. Distance from Stm. M.H. 5	to connection point is	toward Stm. M.H. 4		
2. Calculated invert of main at conn. stub pt is			763.39	
3. Main Size at connection point is			200mmØ	
4. Conn. invert at half diameter (Crown) of main is			763.49	
5. Add to (4) allowance of 0.2 for 1/8 bend adjusted invert now			N/A	
6. Dist. from main to P/L equalsm at% gives rise of			13m @ 7.0% = 0.92m Rise	-
7. Item (5) plus (6) equals Calculated Elev. of conn. inv. at P/L equals				
13. Elev. of ref. hub top				766.614
14. of invert at P/line			764.35	
15. Difference of cut below at property line			2.26	
16. Survey Date	SEPT	19 97 Book Ref. N/A by V.G.		
17. Cut at P/line in feet and inches			7'5"	

This image shows a single sheet of white paper with horizontal blue or grey ruling lines. On the left edge, there is a circular punch hole, suggesting it was part of a binder. The paper is otherwise blank, with no writing or markings.

[illegible]
