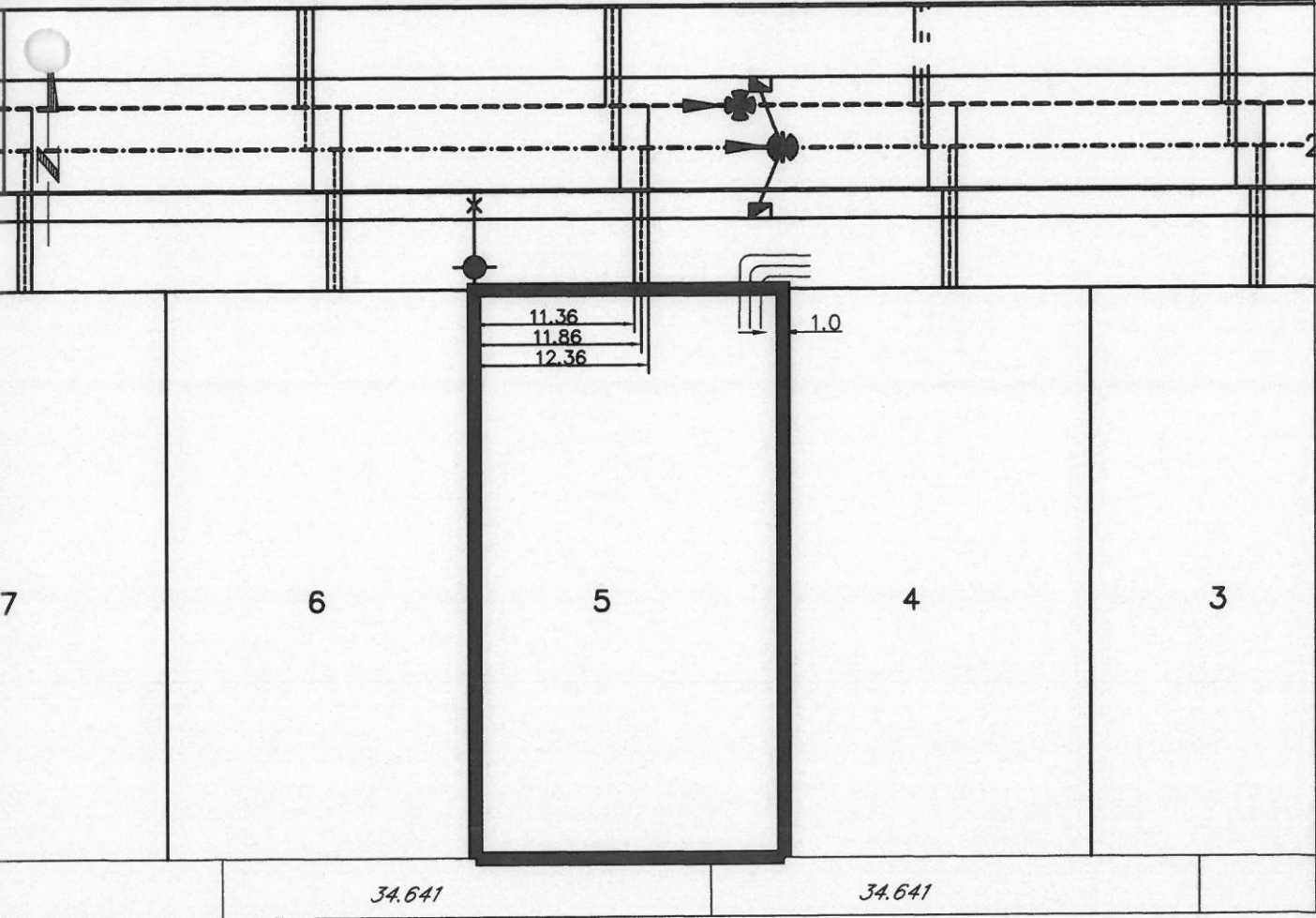


City of Prince George
HISTORY SHEET

SHEET NUMBER 5 OF 18		ROLL NUMBER 023969997	
Legal:	LOT 5	BLK	D.L. 4048
Address: 4673 GRAY DRIVE		PLAN P6741865	
Sanitary Connection: #	SIZE: 100mmØ	MATERIAL: PVC	INV. 762.47m CONNECTED
Water Connection: #	FROM MAIN: 19mmØ COPPER	METER	
Storm Connection: #	SIZE 100mmØ	MATERIAL PVC	INV. 762.50m CONNECTED
Cas. Receipt No's:	WATER	SANITARY	STORM
CURB FROM PROPERTY LINE 5.0m		PAVEMENT WIDTH 10.0m	
B.C. HYDRO	75mmØ DB2	U/G CONNECTION	
B.C. TELEPHONE	50mmØ PVC	U/G CONNECTION	
B.C. GAS	42mmØ PE SDR10		
Information Sheets: REF. DWGS. L&M ENGINEERING LTD. JOB. 1063-05-02			
Comments: BENCH MARK: 86H-1856 766.416m			

THE INFORMATION CONTAINED HEREIN IS FOR INTERNAL USE ONLY.
NOT TO BE RELIED UPON UNLESS CONFIRMED BY THE SITE INSPECTION AND/OR INVESTIGATION



SANITARY & STORM INVERT CALCULATIONS	SANITARY	STORM
1. Distance from San. M.H. 4 to connection point is toward San. M.H. 5	6.8	
1a. Distance from Stm. M.H. 4 to connection point is toward Stm. M.H. 5		10.0
2. Calculated invert of main at conn. stub pt is	761.84	762.25
3. Main Size at connection point is	200mm ϕ	250mm ϕ
4. Conn. invert at half diameter (Crown) of main is	761.94	762.37
5. Add to (4) allowance of 0.2 for 1/8 bend adjusted invert now	N/A	N/A
6. Dist. from main to P/L equalsm at% gives rise of	13m @ 4.4% = 0.58m Rise	10 @ 1.9% = 0.19m Rise
7. Item (5) plus (6) equals Calculated Elev. of conn. inv. at P/L equals		
13. Elev. of ref. hub top		766.416
14. Elev. of invert at P/line	762.47	762.50
15. Difference of cut below at property line	2.50	2.47
16. Survey Date SEPT 19 97 Book Ref. N/A by V.G.		
17. Cut at P/line in feet and inches	8'2"	8'1"

[illegible]

This image shows a single sheet of white paper with horizontal blue or grey ruling lines. The lines are evenly spaced and run across the width of the page. There is no handwriting or other markings on the paper.
