

City of Prince George
HISTORY SHEET

SHEET NUMBER 4 OF 18

ROLL NUMBER 023969989

Legal: LOT 4 BLK D.L. 4048 PLAN P6741855

Address: 4661 GRAY DRIVE

Sanitary Connection: # SIZE: 100mmø MATERIAL: PVC INV. 762.00m CONN

Water Connection: # FROM MAIN: 19mmø COPPER METER

Storm Connection: # SIZE 100mmø MATERIAL PVC INV. 762.01m CONN

Cash Receipt No's: WATER SANITARY STORM

CURB FROM PROPERTY LINE 5.0m PAVEMENT WIDTH

B.C. HYDRO 75mmø DB2 U/G CONNECTION

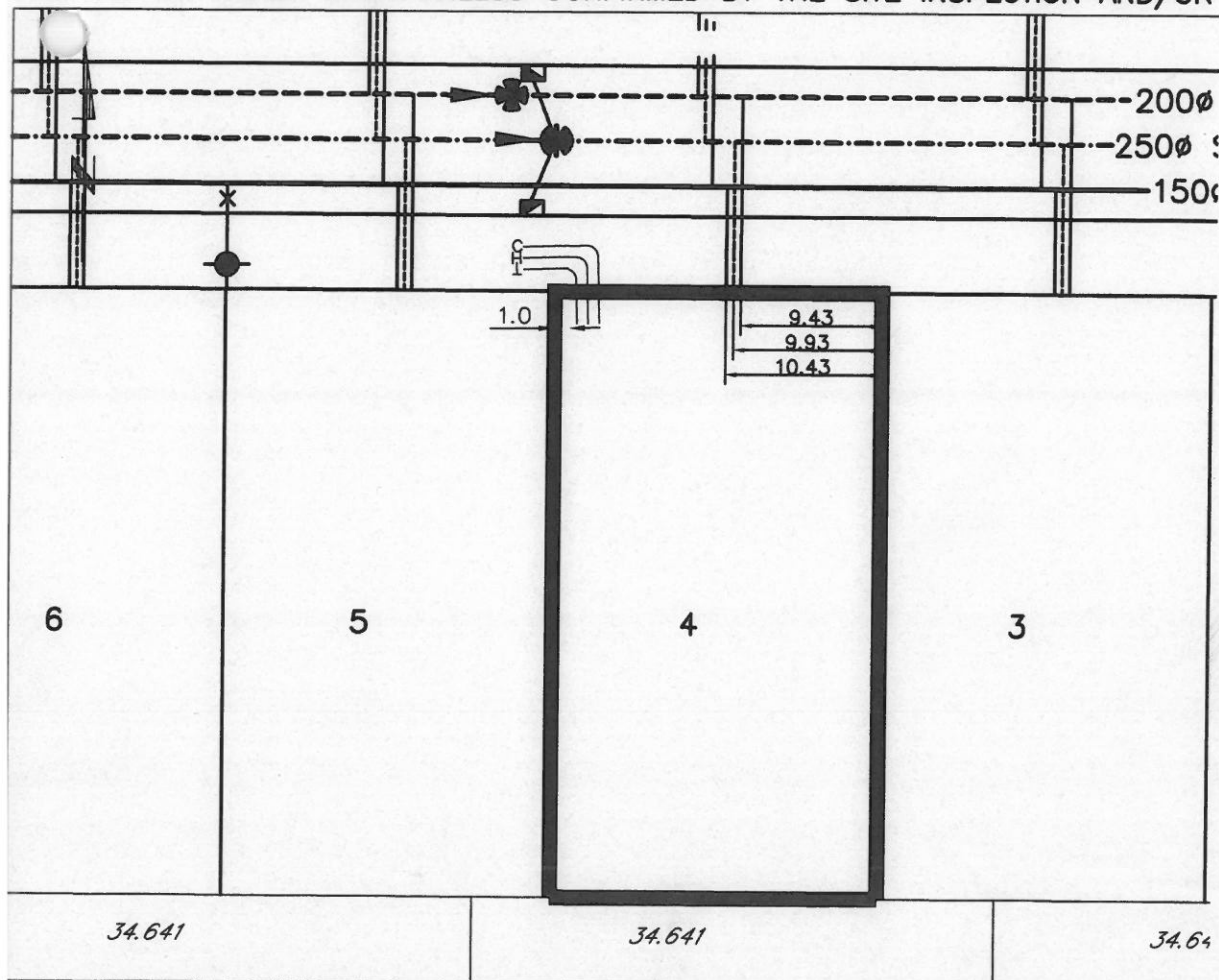
B.C. TELEPHONE 50mmø PVC U/G CONNECTION

B.C. GAS 42mmø PE SDR10

Information Sheets: REF. DWGS. L&M ENGINEERING LTD. JOB. 1063-05-02

Comments: BENCH MARK: 86H-4856 766.416mm

THE INFORMATION CONTAINED HEREIN IS FOR INTERNAL USE ONLY.
NOT TO BE RELIED UPON UNLESS CONFIRMED BY THE SITE INSPECTION AND/OR



SANITARY & STORM INVERT CALCULATIONS			SANITARY	
1. Distance from San. M.H. 4	to connection point is	toward San. M.H. 3	14.9	
1a. Distance from Stm. M.H. 4	to connection point is	toward Stm. M.H. 3		
2. Calculated invert of main at conn. stub pt is			761.32	
3. Main Size at connection point is			200mmØ	
4. Conn. invert at half diameter (Crown) of main is			761.42	
5. Add to (4), allowance of 0.2 for 1/8 bend adjusted invert now			N/A	
6. Dist. from main to P/L equalsm at% gives rise of			13m @ 4.8% = 0.63m Rise	
7. Item (5) plus (6) equals Calculated Elev. of conn. inv. at P/L equals				
13. Elev. of ref. hub top				766.416
14. Elev. of invert at P/line			762.00	
15. Difference of cut below at property line			2.60	
16. Survey Date	SEPT 19 97	Book Ref. N/A by V.G.		
17. Cut at P/line in feet and inches			8'6"	

This image shows a single sheet of white paper with horizontal blue or grey ruling lines. The lines are evenly spaced and run across the width of the page. On the left edge, there is a small, light-colored circular object, possibly a hole punch or a piece of tape. The paper appears to be part of a notebook or a binder.

[illegible]
