



City of Prince George
History Sheet

| | |
|------|-------------|
| PID: | 023207299 |
| MU: | 101828 |
| WO: | 92287/92289 |

Civic Address: 6749 Westgate Ave

Legal Description: Lot: 48 District Lot: 1600 Plan: PGP39361

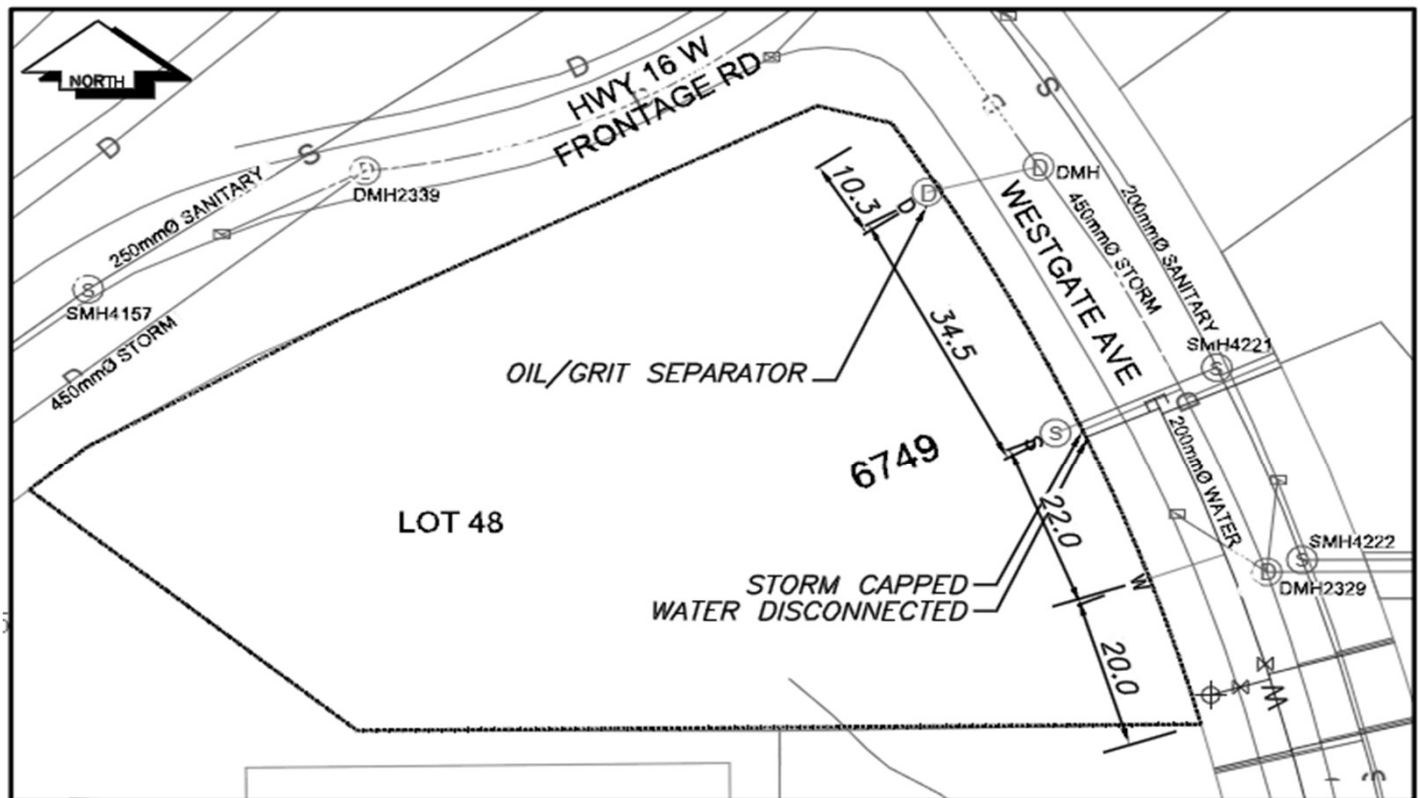
| Service Type | Diameter (mm) | Material | Invert Elev at main (m) | Invert Elev at property line (m) | Invert Depth at service end (m) | Distance into property (m) | Installation Date |
|--------------|---------------|----------|-------------------------|----------------------------------|---------------------------------|----------------------------|-------------------|
| Sanitary | 150mm | PVC | 730.39 | 731.04 | 2.00 | - | December 1994 |
| Water | 200mm | PVC | 730.64 | - | - | - | June 2017 |
| Storm | 300mm | PVC | 729.27 | 732.41 | - | - | June 2017 |

| Service Connection Location | Sanitary (m) | Storm (m) |
|--|--------------|-----------|
| 150mm Sanitary service connected to San MH4221 | - | |
| 300mm Storm service connected to Stm MH | | |

| Power | Size | Communications | Size | Cable | Size | Gas | Size |
|---------------------|------|---------------------|------|---------------------|------|----------|------|
| BC Hydro | - | Telus | - | Shaw | - | FortisBC | - |
| Underground Service | | Underground Service | | Underground Service | | | |

| | | | |
|---------------|------------------------------|--------------|---|
| Installed by: | City of Prince George forces | Survey Date: | - |
| Comments: | | | |
| | | | |
| | | | |

NOT TO SCALE The information contained herein is for internal use only.
Not to be relied on unless confirmed by site inspection and/or investigation.



| | | |
|---------------------------|----------------------------|---------------------|
| CS ^o CURB STOP | — W — WATER SERVICE | — S — STORM SERVICE |
| CO ^o CLEAN OUT | - - - S - SANITARY SERVICE | — G — GAS |
| ⊗ WATER VALVE | ⊗ FIRE HYDRANT | - - - ENCUMBRANCE |

NOT TO SCALE