



# City of Prince George History Sheet

|      |           |
|------|-----------|
| PID: | 023134780 |
| SD:  | 100339    |
| WO:  |           |

Civic Address: 5867 Leland Rd

Legal Description: Lot: 1 District Lot: 1598 Plan: PGP39090 except Plan EPP13965

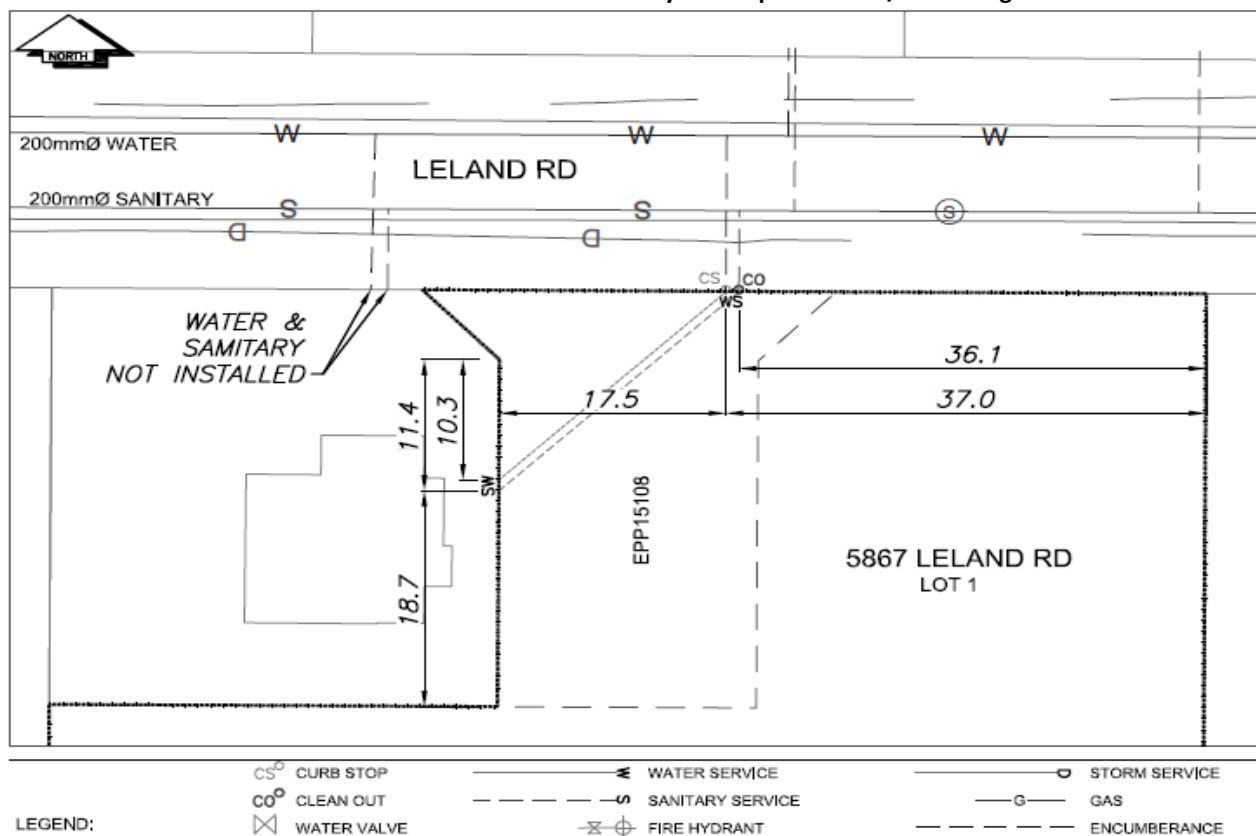
| Service Type | Diameter (mm) | Material | Depth of cut at main (m) | Invert Elev at property line (m) | Invert Depth at service end (m) | Distance into property (m) | Installation Date |
|--------------|---------------|----------|--------------------------|----------------------------------|---------------------------------|----------------------------|-------------------|
| Sanitary     | 100mm         | PVC      | 737.52                   | 739.80                           | 2.41                            | -                          | August 2001       |
| Water        | 20mm          | Copper   | -                        | -                                | -                               | -                          | December 2001     |
| Storm        | N/A           | N/A      | -                        | -                                | -                               | -                          |                   |

| Service Connection Location     |      |                         |      | Sanitary (m) | Storm (m) |
|---------------------------------|------|-------------------------|------|--------------|-----------|
| Distance from downstream San MH | 4768 | towards upstream San MH | 4769 | 17.50        |           |
| Distance from downstream Stm MH | -    | towards upstream Stm MH | -    |              |           |

| Power            | Size | Communications   | Size | Cable            | Size | Gas      | Size |
|------------------|------|------------------|------|------------------|------|----------|------|
| BC Hydro         | -    | Telus            | -    | Shaw             | -    | FortisBC | -    |
| Overhead Service |      | Overhead Service |      | Overhead Service |      |          |      |

|               |   |              |   |
|---------------|---|--------------|---|
| Installed by: | City of Prince George forces  | Survey Date: | - |
| Comments:     | 5879 Leland Rd connected to the water and sanitary services on 5867 Leland Rd |              |   |

**NOT TO SCALE** The information contained herein is for internal use only.  
Not to be relied on unless confirmed by site inspection and/or investigation.



**NOT TO SCALE**