



City of Prince George History Sheet

PID:	018779662
MU:	101363
WO:	87482

Civic Address: 1995 20th Avenue

Legal Description: Lot: B District Lot: 777 Plan: PGP38007

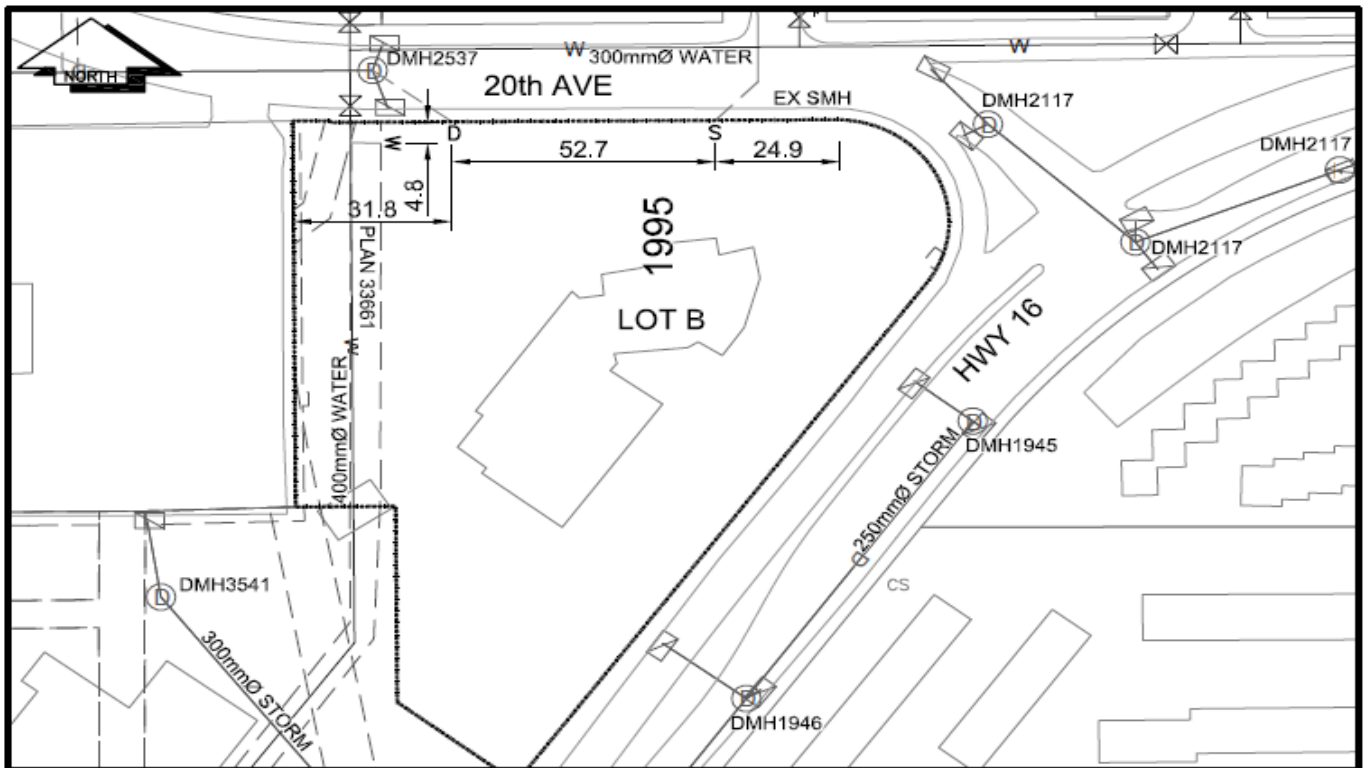
Service Type	Diameter (mm)	Material	Invert Elev at main (m)	Invert Elev at property line (m)	Invert Depth at service end (m)	Distance into property (m)	Installation Date
Sanitary	150mm	PVC	-	568.15	2.21	-	November 1994
Water	150mm	Copper	-	-	-	-	March 2016
Storm	300mm	PVC	-	567.52	2.85	-	November 1994

Service Connection Location	Sanitary (m)	Storm (m)
150mm Sanitary service connected to San MH on 20th Ave	-	
300mm Storm service connected to Stm MH 2537		

Power	Size	Communications	Size	Cable	Size	Gas	Size
BC Hydro	-	Telus	-	Shaw	-	FortisBC	-
Overhead Service		Overhead Service		Overhead Service			

Installed by:	City of Prince George forces	Survey Date:	-
and abandoned.	Existing 100mm Water service deactivated at main.		

NOT TO SCALE The information contained herein is for internal use only.
Not to be relied on unless confirmed by site inspection and/or investigation.



CS	CURB STOP	---	W	WATER SERVICE	---	S	STORM SERVICE
CO	CLEAN OUT	---	S	SANITARY SERVICE	---	G	GAS

NOT TO SCALE