



City of Prince George
History Sheet

PID:	015304221
SD/MU:	
WO:	5018770

Civic Address: 1198, 1150 Victoria St

Legal Description: Lot: 1 District Lot: 343 Plan: 34264

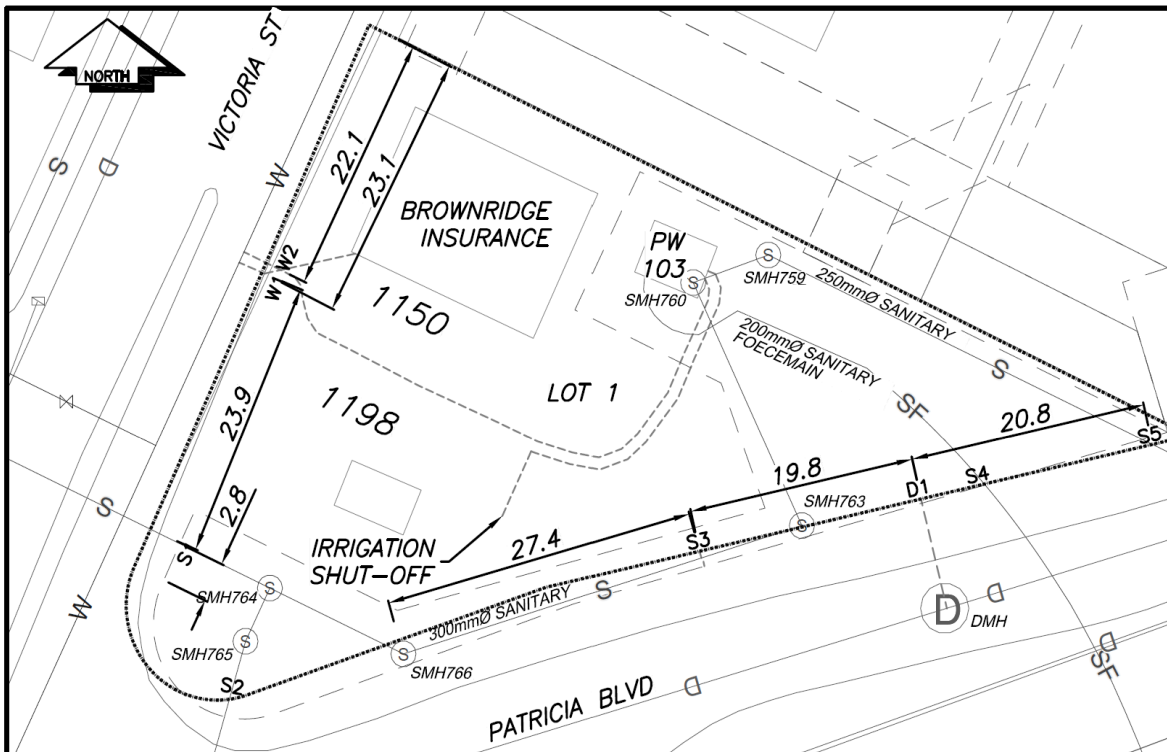
Service Type	Diameter (mm)	Material	Invert Elev at main (m)	Invert Elev at property line (m)	Invert Elev at service end (m)	Distance into property (m)	Installation Date
Sanitary (S1)	300mm	PVC	-	-	-	-	January 1989
Sanitary (S2)	200mm	AC	-	-	-	-	January 1990
Sanitary (S3)	100mm	AC	-	-	-	-	January 1990
Sanitary (S4)	200mm	AC	-	-	-	-	January 1959
Sanitary (S5)	250mm	AC	-	-	-	-	January 1967
Water (W1)	20mm	Copper	-	-	-	-	January 1959
Water (W2)	50mm	Plastic	-	-	-	-	October 2020
Storm (D1)	N/A	CMP	-	-	-	-	January 1971

Service Connection Location				Sanitary (m)	Storm (m)
Distance from downstream San MH				-	-
Distance from downstream Stm MH				-	-

Power	Size	Communications	Size	Cable	Size	Gas	Size
BC Hydro	-	Telus	-	Shaw	-	FortisBC	-
Overhead Service		Overhead Service		Overhead Service			

Installed by:	City of Prince George forces	Survey Date:	-
Comments:			

NOT TO SCALE The information contained herein is for internal use only.
Not to be relied on unless confirmed by site inspection and/or investigation.



CS ^o CURB STOP	—W— WATER SERVICE	—S— STORM SERVICE
CO ^o CLEAN OUT	- - - - - SANITARY SERVICE	—G— GAS
⊗ WATER VALVE	⊗ FIRE HYDRANT	- - - - - ENCUMBERANCE

NOT TO SCALE