



City of Prince George
History Sheet

PID:	014003589
SD/MU:	
WO:	

Civic Address: 4500, 4580 Hart Hwy
2229 Knell Rd

Legal Description: Lot: 4 District Lot: 4040 Plan: 1298

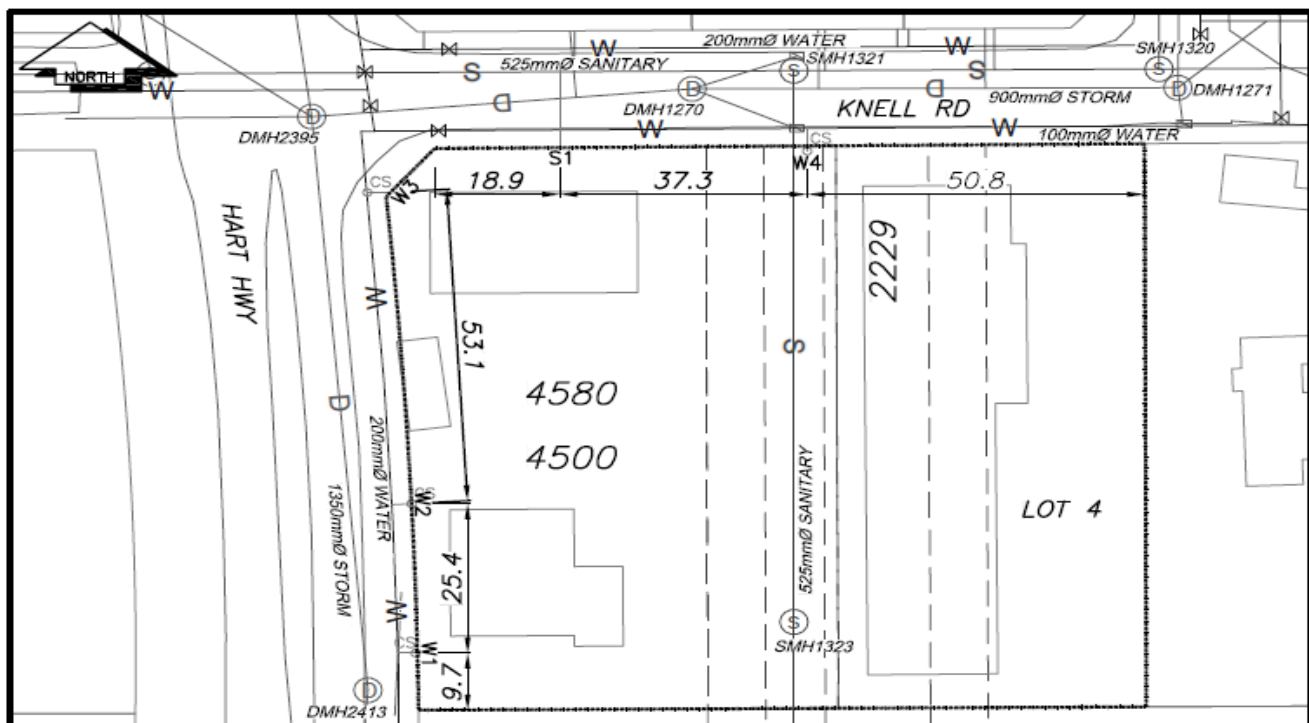
Service Type	Diameter (mm)	Material	Invert Elev at main (m)	Invert Elev at property line (m)	Invert Depth at service end (m)	Distance into property (m)	Installation Date
Sanitary (S1)	100mm	AC	-	-	2.74	-	December 1976
Sanitary (S2)	100mm	AC	-	-	2.74	-	December 1976
Sanitary (S3)	100mm	AC	-	-	1.82	-	December 1976
Water (W1)	20mm	Copper	653.57	653.32	653.44	-	February 2016
Water (W2)	20mm	Copper	-	-	-	-	November 1981
Water (W3)	25mm	Copper	-	-	-	-	December 1971
Water (W4)	20mm	Copper	-	-	-	-	December 1962
Storm	N/A	N/A	-	-	-	-	

Service Connection Location	Sanitary (m)	Storm (m)
Distance from downstream San MH - towards upstream San MH	-	-
Distance from downstream Stm MH - towards upstream Stm MH	-	-

Power	Size	Communications	Size	Cable	Size	Gas	Size
BC Hydro	-	Telus	-	Shaw	-	FortisBC	-
Overhead Service		Overhead Service		Overhead Service			

Installed by:	Water service W1 installed by the City of Prince George forces	Survey Date:	-
Comments:	Locations of S2 and S3 not recorded.		

NOT TO SCALE The information contained herein is for internal use only.
Not to be relied on unless confirmed by site inspection and/or investigation.



NOT TO SCALE