



Lot Services Sketch

PID: 013939718
031993982

CITY OF PRINCE GEORGE

Civic Address: 2274 QUEENSWAY

Legal Description: Lot: 1 Block: 26 District Lot: 417 Plan: 1409 Legal Description: Lot: A District Lot: 417 Plan: EPP121011

Service Type	Diameter (mm)	Material	Invert Elev @ Main (m)	Invert Elev @ Property Line (m)	Invert Elev @ Service End (m)	Distance into Property (m)	Installation Date
Sanitary (S1)	100	AC	-	-	-	-	JAN 1981
Sanitary (S2)	Unknown	Unknown	-	-	-	-	JAN 1981
Water (W1)	20	COPPER	-	-	-	-	JAN 1955
Water (W2)	20	COPPER	-	-	-	-	JUN 2015
Water (W3)	Unknown	Unknown	-	-	-	-	JAN 1955
Storm (D1)	150	AC	-	-	-	-	JAN 1979
Storm (D2)	Unknown	Unknown	-	-	-	-	JAN 1978

Sanitary Service Connection Location Notes	Storm Service Connection Location Notes
Distance from S1 downstream SAN MH #1722: 70.32m	Distance from downstream STM MH #3254: 0.00m
Distance to S1 upstream SAN MH #1727: 60.74m	Distance to upstream STM MH #3254: 0.00m
Distance from S2 downstream SAN MH #1722: 89.73m	Distance from downstream STM MH #3254: 27.36m
Distance to S2 upstream SAN MH #1727: 41.33m	Distance to upstream STM MH #3555: 22.587m

Miscellaneous Utilities			
Power	Communications	Cable	Gas
BC Hydro	TELUS	Shaw Cable	FortisBC
Overhead Service	Overhead Service	Overhead Service	Underground Service

Installation By:	W2 Water Service - City of Prince George	Draft Date:	FEB 2024	Survey Date:	JUN 2015
------------------	--	-------------	----------	--------------	----------

Comments:
See Page 2 for Servicing Sketch Details.
Storm Service (D1) is ~13.3m South from the North West corner of Lot 1. Water Service (W1) is ~16.7m South from the North West corner of Lot 1.
Sanitary Service (S1) is ~7.1m South from the North West corner of Lot A. Water Service (W2) is ~8.8m South from the North West corner of Lot A.
Storm Service (D2) is ~23.8m South from the North West corner of Lot A. Water Service (W3) is ~ 25.5 South from the North West corner of Lot A.
Sanitary Service (S2) is ~26.5m South from the North West corner of Lot A.

**NOT TO SCALE The information contained herein is for internal use only.
Not to be relied on unless confirmed by site inspection and/or investigation.**



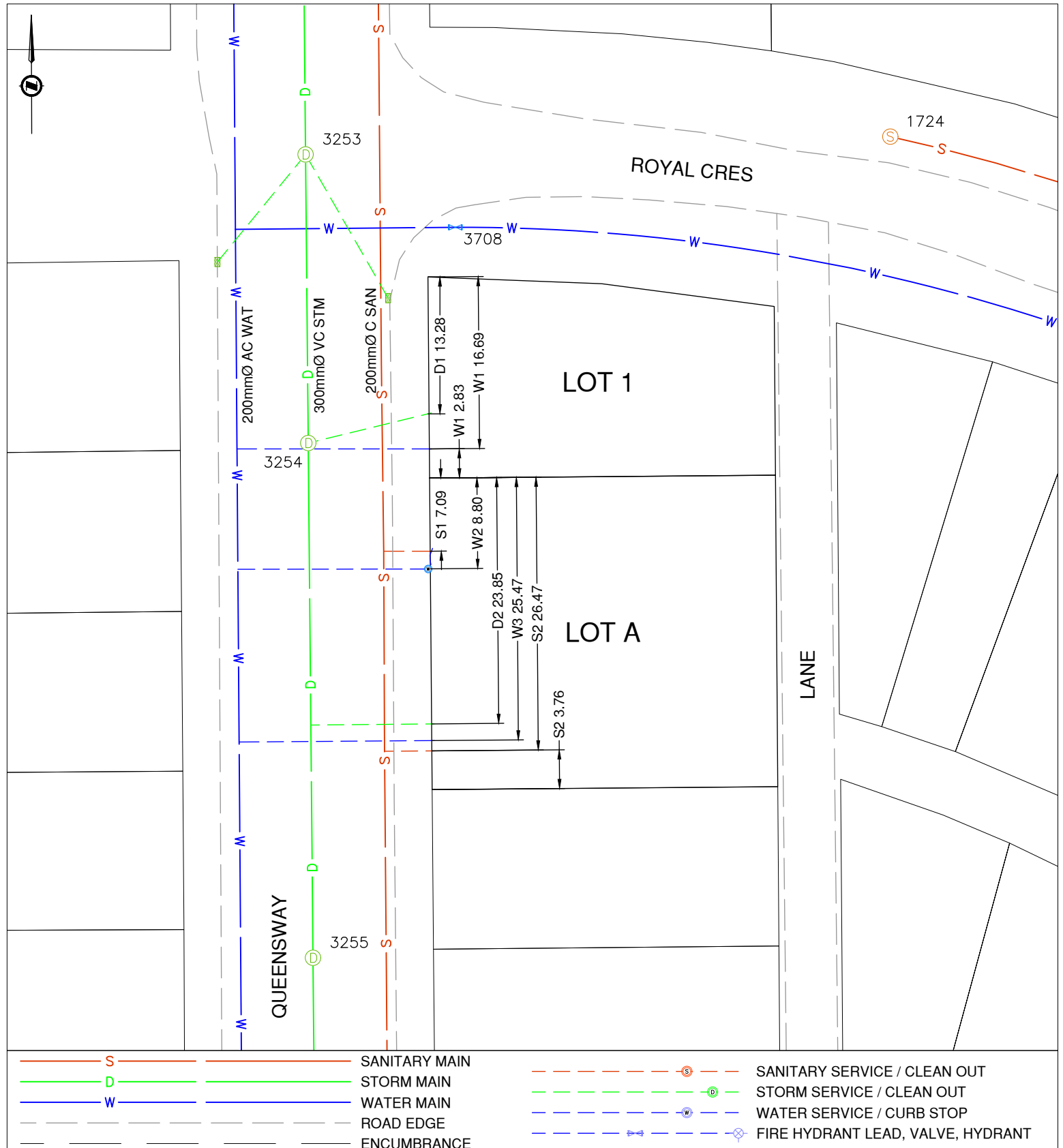
Lot Services Sketch

PID:	013939718 031993982
------	------------------------

CITY OF
PRINCE GEORGE

Civic Address: 2274 QUEENSWAY

Legal Description: Lot: 1 Block: 26 District Lot: 417 Plan: 1409 Legal Description: Lot: A District Lot: 417 Plan: EPP121011



NOT TO SCALE The information contained herein is for internal use only.
Not to be relied on unless confirmed by site inspection and/or investigation.