



City of Prince George History Sheet

PID:	013810189
MU:	101597
WO:	83303/83301

Civic Address: 999 Central street West

Legal Description: Lot: 10 XCEPT PLAN 20921 District Lot: 936 Plan: 15557

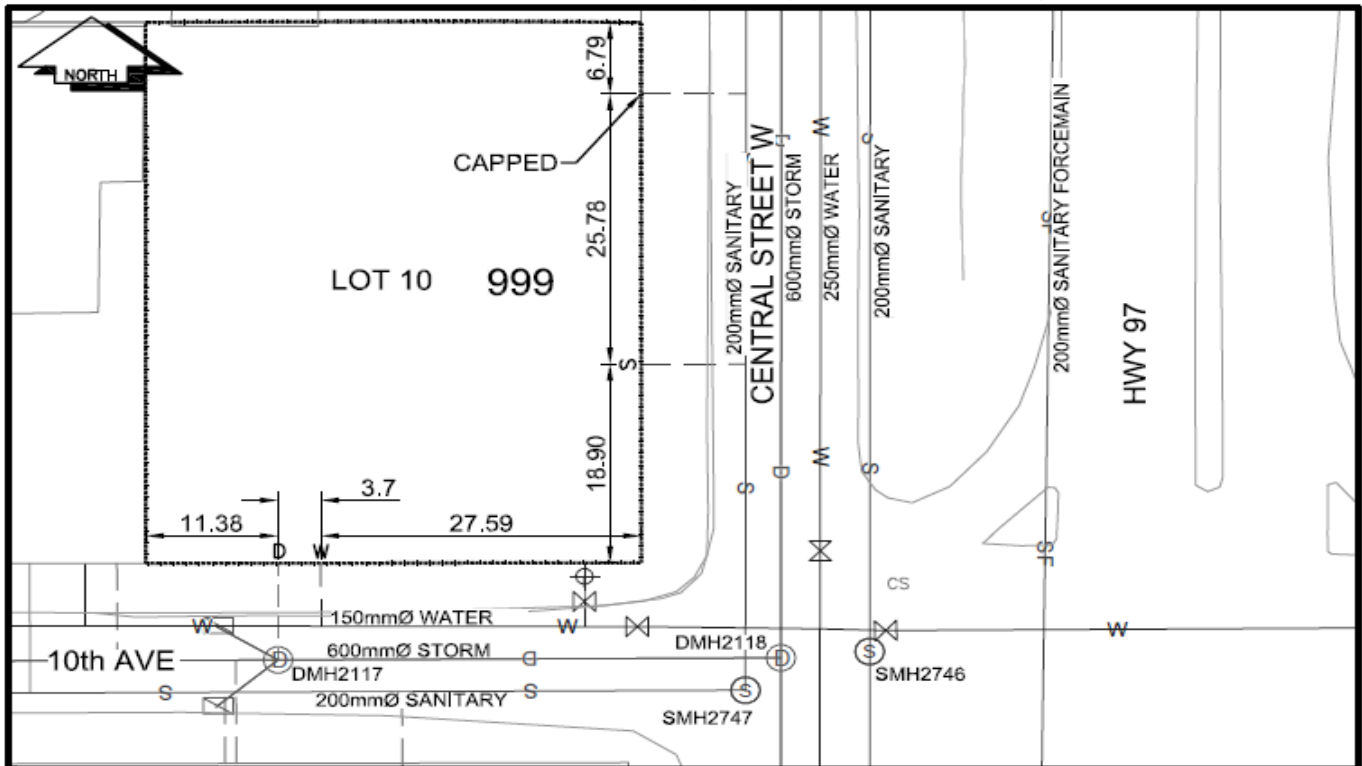
Service Type	Diameter (mm)	Material	Invert Elev at main (m)	Invert Elev at property line (m)	Depth at property (m)	Distance into property (m)	Installation Date
Sanitary	100mm	AC	-	597.78	1.52	-	September 1968
Water	50mm	Copper	-	-	2.25	-	January 1965
Storm	250mm	PVC	-	-	2.25	-	April 2015

Service Connection Location				Sanitary (m)	Storm (m)
Distance from downstream San MH	2747	towards upstream San MH	1958	31.40	
250mm Storm service connected to Stm MH 2117					

Power	Size	Communications	Size	Cable	Size	Gas	Size
BC Hydro	-	Telus	-	Shaw	-	FortisBC	-
Overhead Service		Overhead Service		Overhead Service			

Installed by:	City of Prince George forces	Survey Date:	-
Comments:	Sanitary sewer lateral inspected April 2015		
	25mm Water disconnected at main. Existing 50mm water service curb stop replaced in 2015.		

NOT TO SCALE The information contained herein is for internal use only.
Not to be relied on unless confirmed by site inspection and/or investigation.



LEGEND:	CS ^o CURB STOP	--- WATER SERVICE	--- STORM SERVICE
	CO ^o CLEAN OUT	--- SANITARY SERVICE	--- GAS

NOT TO SCALE