



City of Prince George  
**History Sheet**

PID:	013566008
MU:	102011/102064
WO:	96548/97288

Civic Address: 2000 Ospika Blvd

Legal Description: Lot: 5 Block: 2 District Lot: 2508 Plan: 6087

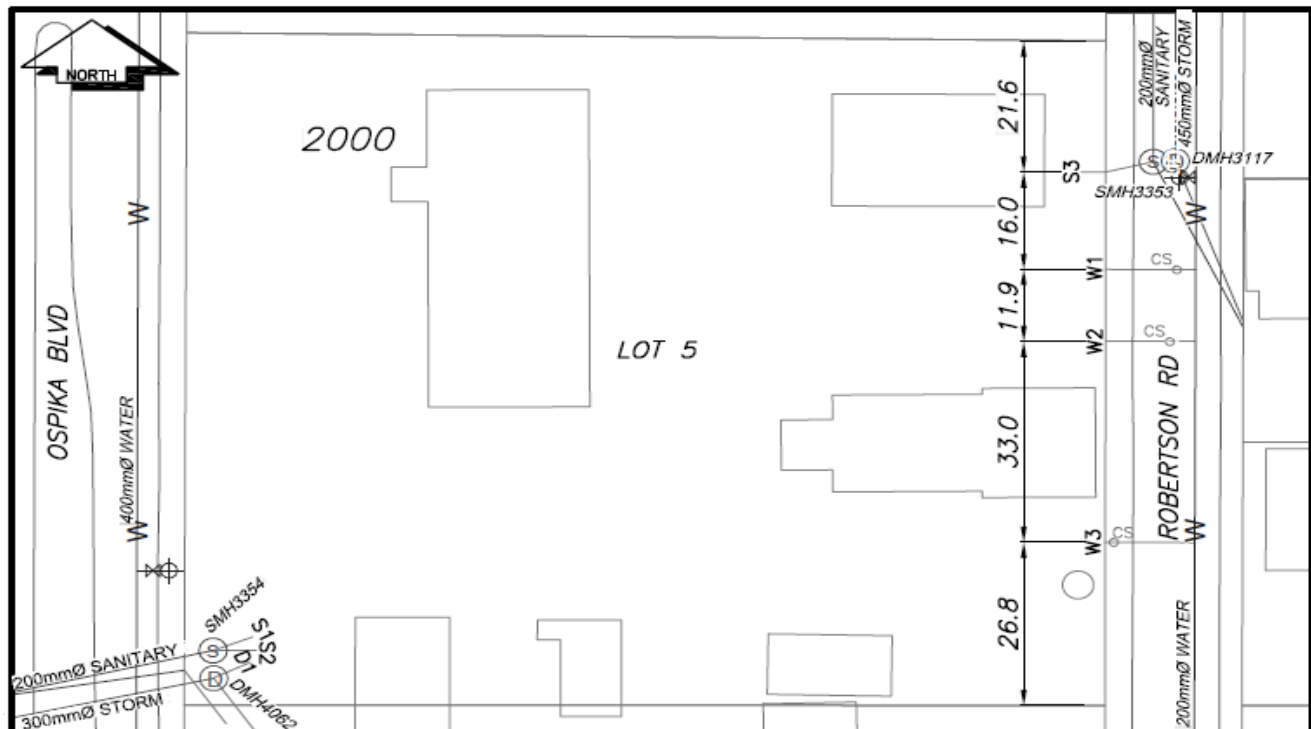
Service Type	Diameter (mm)	Material	Invert Elev at main (m)	Invert Elev at property line (m)	Invert Elev at service end (m)	Distance into property (m)	Installation Date
Sanitary (S1)	100mm	AC	-	-	-	-	December 1988
Sanitary (S2)	100mm	AC	-	-	-	-	December 1988
Sanitary (S3)	100mm	PVC	602.26	602.57	-	-	September 2018
Water (1)	50mm	Copper	-	-	-	-	December 1978
Water (2)	20mm	Copper	-	-	-	-	December 1978
Water (3)	40mm	Copper	601.97	602.26	-	-	July 2018
Storm	300mm	AC	-	-	-	-	December 1988

Service Connection Location	Sanitary (m)	Storm (m)
100mm Sanitary services S1 & S2 connected to San MH3354	-	
100mm Sanitary services S3 connected to San MH3353		
Storm service connected to StmMH4062		

Power	Size	Communications	Size	Cable	Size	Gas	Size
BC Hydro	-	Telus	-	Shaw	-	FortisBC	-
Overhead Service		Overhead Service		Overhead Service			

Installed by:	City of Prince George forces	Survey Date:	-
Comments:			

**NOT TO SCALE** The information contained herein is for internal use only.  
**Not to be relied on unless confirmed by site inspection and/or investigation.**



CS	CURB STOP	—	WATER SERVICE	—	STORM SERVICE
CO	CLEAN OUT	- - - -	SANITARY SERVICE	—G—	GAS
⊗	WATER VALVE	—	FIRE HYDRANT	- - - -	ENCUMBRANCE

**NOT TO SCALE**