

Update requested 2021

- CFS 349086

City of Prince George

HISTORY SHEET

015936449 012994685

015936511

012994669

012994677

For PIDs, see

next page

See attached

SHEET NUMBER

Roll Number

Legal: LOT'S 1-20, 1-20-1-13 BLOCK 145-145 D.L. 343 PLAN 1268

Address: ~~Public Works Yard - 4th Ave~~ 505 4th Ave
597 4th Ave

Sanitary Connection: # 7570, 9872 (4") (4") SIZE 1" MATERIAL A.C. INV. CONNECTED ✓

Water Connection # 4981, 9872 (1 1/2") SIZE 2" / 1 1/2" MATERIAL CU. METER CONNECTED ✓

Storm Connection: # SIZE 200mm MATERIAL INV. CONNECTED n/c

Cash Receipt No's: WATER 1274 SANITARY 1274 STORM 1274

CURB FROM PROPERTY LINE 10' PAVEMENT WIDTH 48'

B.C. HYDRO 0/H UNDERGROUND CONNECTION

B.C. TELEPHONE 0/H UNDERGROUND CONNECTION

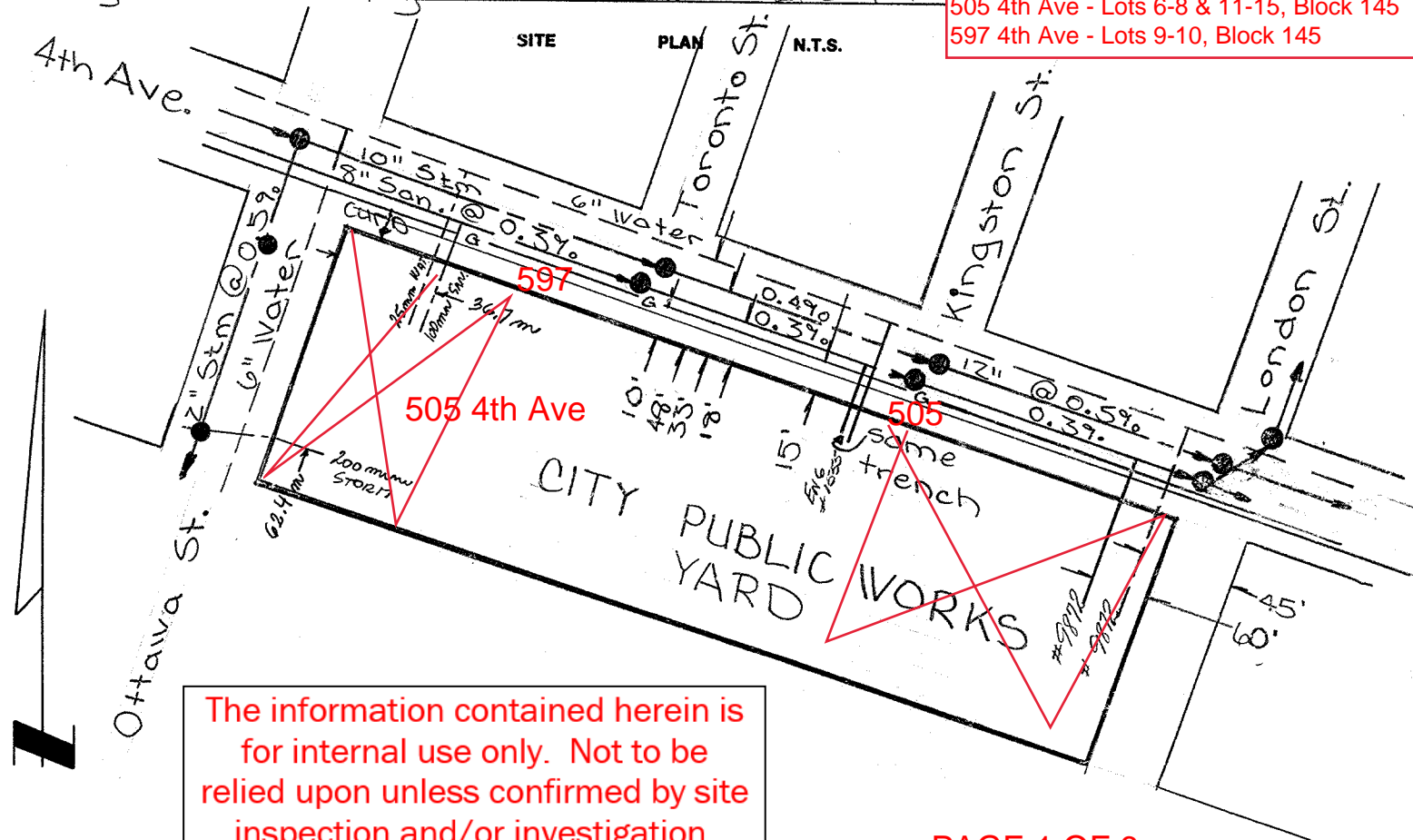
INLAND GAS 10 4th Ave 1 1/4" @ m

Information Sheets:

Comments: San. Con. No's 1171-1172 given on old history sheet for Block 145, but couldn't find any divg. showing a connection.

The information contained herein is for internal use only. Not to be relied upon unless confirmed by site inspection and/or investigation.

505 4th Ave - Lots 1-20, Block 144
505 4th Ave - Lots 6-8 & 11-15, Block 145
597 4th Ave - Lots 9-10, Block 145



The information contained herein is for internal use only. Not to be relied upon unless confirmed by site inspection and/or investigation.

BLOCK 145**505 4th Ave**

007796510 Lot 6

013042157 Lot 7

007796536 Lot 8

007796561 Lot 11

007796579 Lot 12

007796609 Lot 13

007796617 Lot 14

007796625 Lot 15

597 4th Ave

013023845 Lot 9

013023861 Lot 10

LOT A PLAN**EPP56461****693 4th Ave**

029807981

BLOCK 144**505 4th Ave**

007796692 Lot 1

007796706 Lot 2

007796714 Lot 3

007796722 Lot 4

007796731 Lot 5

007796633 Lot 6

007796650 Lot 7

007796676 Lot 8

015936554 Lot 9

015936589 Lot 10

015936597 Lot 11

015936601 Lot 12

010193774 Lot 13

015936619 Lot 14

015936627 Lot 15

015936635 Lot 16

015936643 Lot 17

015936651 Lot 18

015936660 Lot 19

015936678 Lot 20

BLOCK 143**433 4th Ave**

015936333 Lot 1

015936368 Lot 2

015936376 Lot 3

015936384 Lot 4

015936392 Lot 5

015936406 Lot 6

015936422 Lot 7

015936431 Lot 8

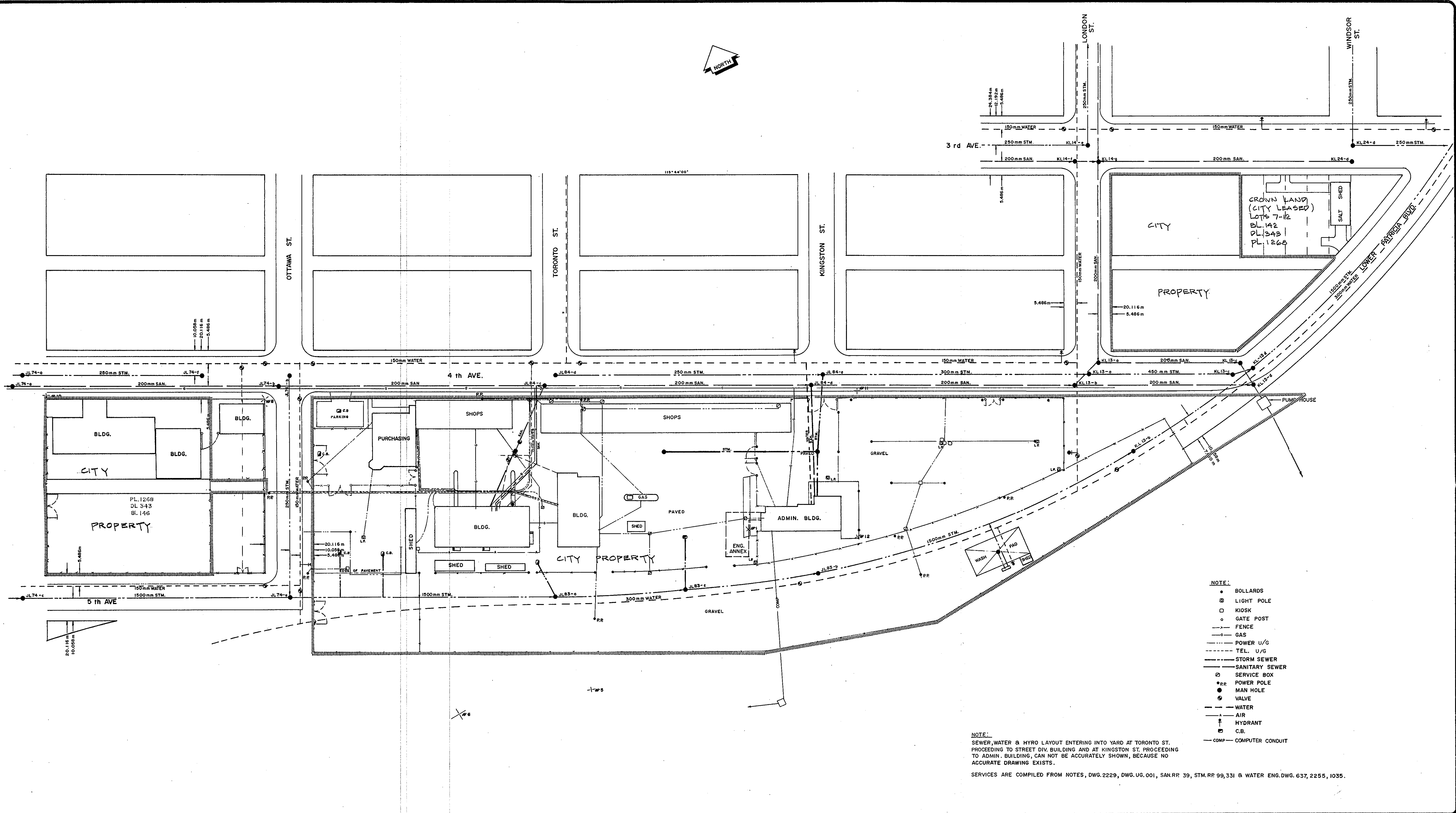
015936449 Lot 9

015936511 Lot 10

012994669 Lot 11

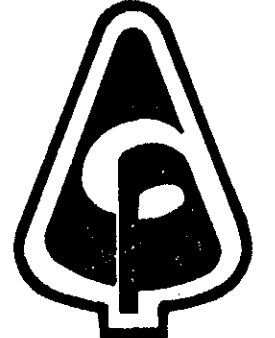
012994677 Lot 12

012994685 Lot 13



The City of Prince George does not represent or guarantee that the information contained in this document is accurate or reliable, and any person who relies on this information in this document does so at his / her own risk.

REVISIONS				
No.	DATE	BY	SUBJECT	

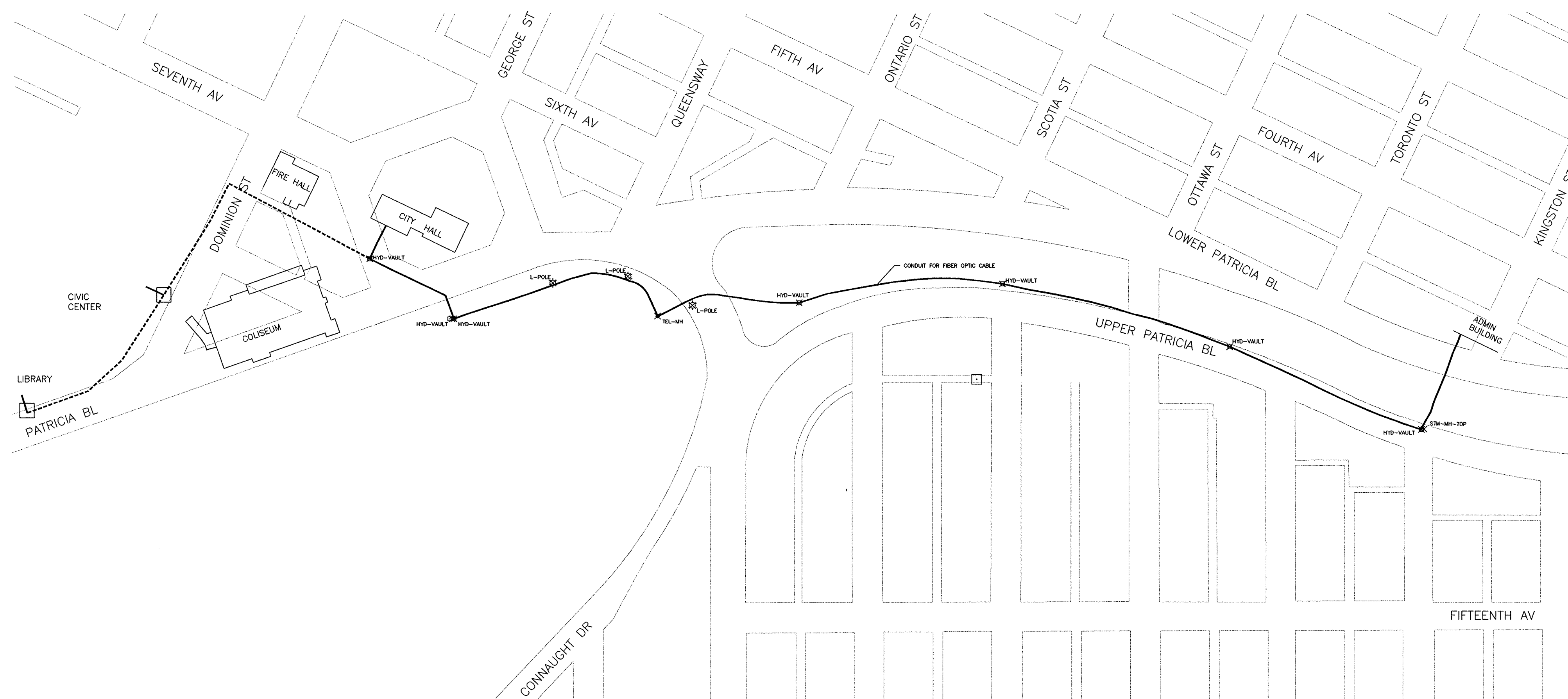


city of
prince george

CITY OF PRINCE GEORGE
PUBLIC WORKS DEPARTMENT

CITY OF PRINCE GEORGE
PUBLIC WORKS YARD FACILITIES,
UG-POWER, TEL. AND OTHER SERVICES.

DRAWN: K.H.L.	TRACED:	CHECKED:
VERT.	HOR. 1:750	DATE: OCT. 12, 1990
SCALES	CITY ENGINEER	DWG. No. 2685-E



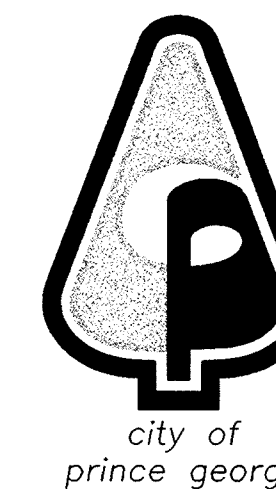
— EXISTING CONDUIT = 866m
CITY HALL TO PUBLIC WORKS ADMINISTRATION BUILDING

The City of Prince George does not represent or guarantee that the information contained in this document is accurate or reliable, and any person who relies on this information in this document does so at his / her own risk.

2. AS BUILT WJN OCT 18, 1995
1. CHANGED CONDUIT LOCATION FROM LOWER PATRICIA TO UPPER PATRICIA. WJN JULY 18, 1995

REVISIONS

ENGINEERS' SEAL



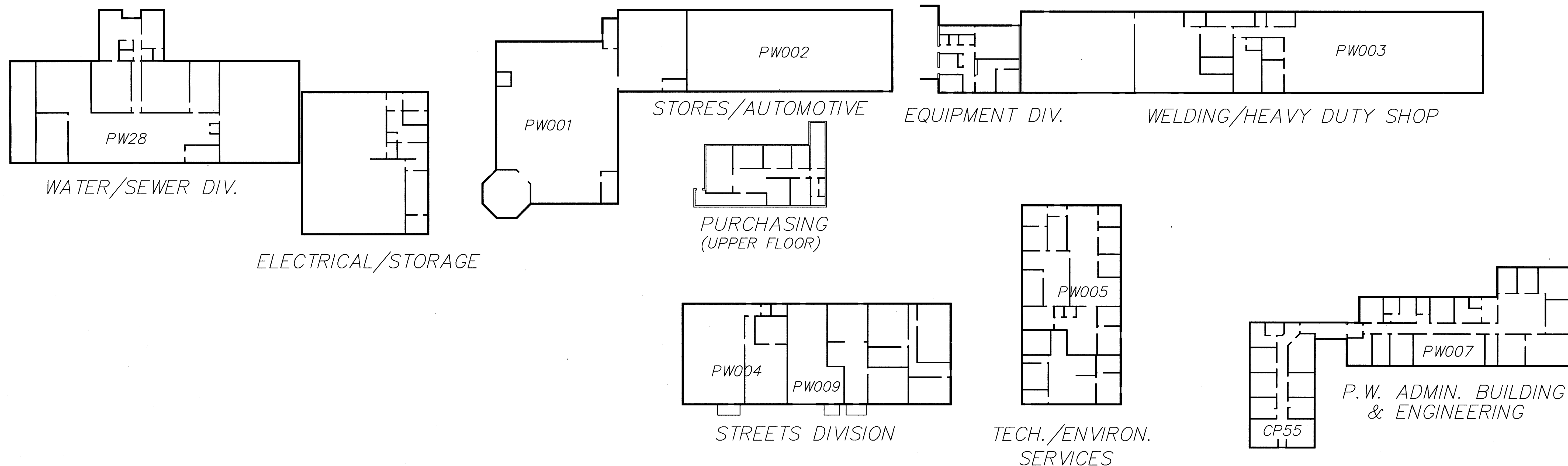
DRAWN BY: WJN
CHECKED BY:
ENGINEER:
FIELD BOOK: 78
DATA FILE: 951016M1 PROJECT:
DATE: JUNE 1, 1995
SCALES
HOR. 1:2000 VERT.

LOCATION OF CONDUIT
FOR FIBER OPTIC CABLE
TO PUBLIC WORKS YARD

ENG DWG
E4363



4th AVENUE

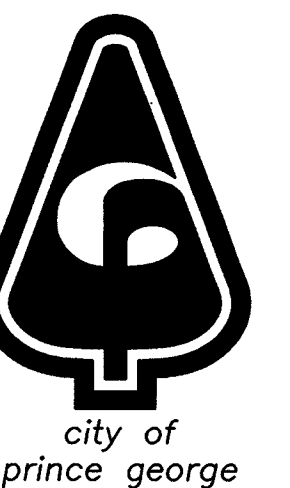


The City of Prince George does not represent or guarantee that the information contained in this document is accurate or reliable, and any person who relies on this information in this document does so at his / her own risk.

NOV. 4, 97	AS-CONSTRUCTED	GSD
------------	----------------	-----

REVISIONS

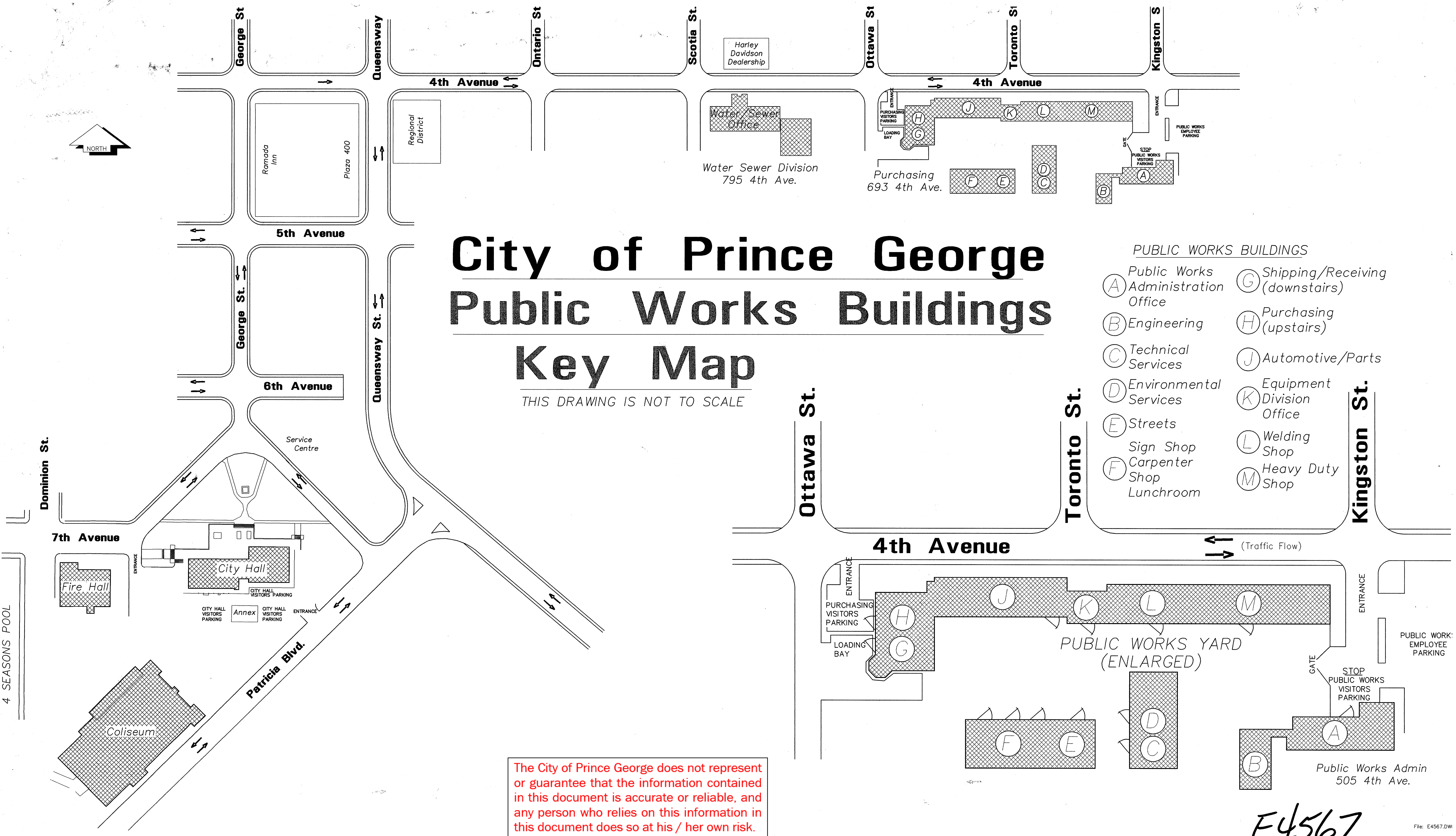
ENGINEERS' SEAL



DRAWN BY: GSD	
CHECKED BY:	
ENGINEER:	
FIELD BOOK:	
DATA FILE:	PROJECT: 96022
DATE: MARCH 26, 97	
SCALES	
HOR. 1:3000	VERT. SAME

GENERAL ARRANGEMENT
C.P.G. PUBLIC WORKS YARD
4th AVENUE

E4454-1



City of Prince George Public Works Buildings Key Map

THIS DRAWING IS NOT TO SCALE

PUBLIC WORKS BUILDINGS

- | | |
|--|-------------------------------------|
| (A) Public Works Administration Office | (G) Shipping/Receiving (downstairs) |
| (B) Engineering | (H) Purchasing (upstairs) |
| (C) Technical Services | (J) Automotive/Parts |
| (D) Environmental Services | (K) Equipment Division Office |
| (E) Streets Sign Shop Carpenter Shop Lunchroom | (L) Welding Shop |
| | (M) Heavy Duty Shop |

The City of Prince George does not represent or guarantee that the information contained in this document is accurate or reliable, and any person who relies on this information in this document does so at his / her own risk.

E4567