



City of Prince George  
**History Sheet**

PID:	012683493
MU:	101043
WO:	52865

Civic Address: 2591 Vance Rd

Legal Description: Lot: 1 District Lot: 753 Plan: 10352

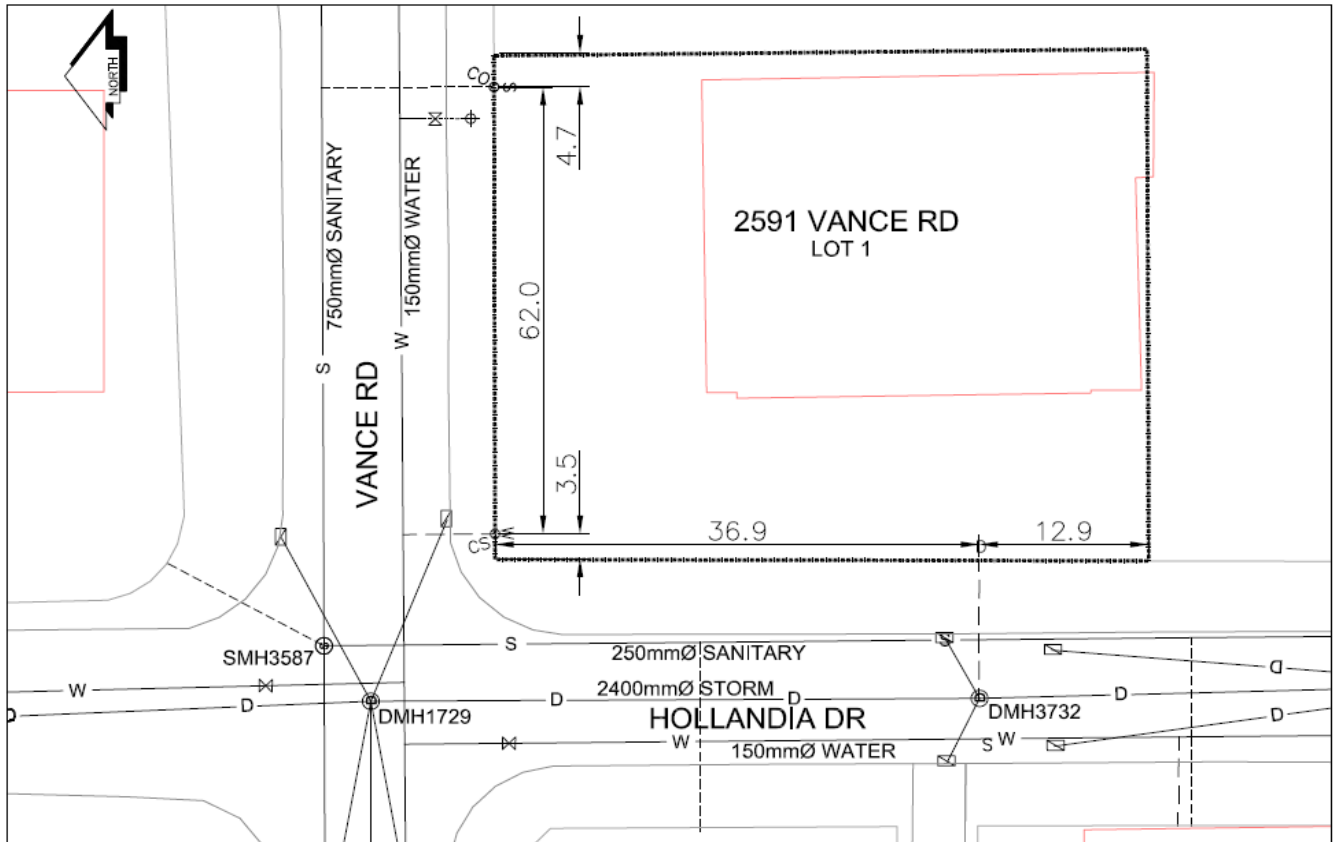
Service Type	Diameter (mm)	Material	Invert Elev at main (m)	Depth of cut at property line (m)	Invert Elev at service end (m)	Distance into property (m)	Installation Date
Sanitary	100mm	PVC	-	2.44	-	-	April 1978
Water	40mm	Copper	-	-	-	-	May 2010
Storm	150mm	PVC	-	-	-	-	May 2010

Service Connection Location				Sanitary (m)	Storm (m)
Distance from downstream San MH	3586	towards upstream San MH	3587	38.59	
150mm storm service connected to Stm MH 3732					

Power	Size	Communications	Size	Cable	Size	Gas	Size
BC Hydro	-	Telus	-	Shaw	-	FortisBC	-
Underground Service		Underground Service		Underground Service			

Installed by:	City of Prince George forces	Survey Date:	-
Comments:			

**NOT TO SCALE** The information contained herein is for internal use only.  
Not to be relied on unless confirmed by site inspection and/or investigation.



LEGEND:	CS <sup>o</sup> CURB STOP	--- WATER SERVICE	--- STORM SERVICE
	CO <sup>o</sup> CLEAN OUT	--- SANITARY SERVICE	⊗ WATER VALVE

**NOT TO SCALE**