

# City of Prince George

## HISTORY SHEET

Refer to 1974 SFC Assessment

SHEET NUMBER 8035

**Roll Number** 120 SF6

**Legal:** LOT'S 21 22 23 24 BLOCK 24 D.L. 417 PLAN 1409

Address: 2271 FARRELL Park Place Manufactured Home Park  
MORANS TRAILER COURT

Sanitary Connection: # 244 SIZE 4" MATERIAL AC INV. 6524 CONNECTED Nov 15/72

Water Connection #	SIZE	MATERIAL	METER	CONNECTED
	2	2		✓

Storm Connection:	#	SIZE	MATERIAL	INV.	CONNECTED
-------------------	---	------	----------	------	-----------

Cash Receipt No's: 6524 WATER ☒ SANITARY ☒ STORM ☐

CURB FROM PROPERTY LINE PAVEMENT WIDTH

B.C. HYDRO      04      UNDERGROUND CONNECTION

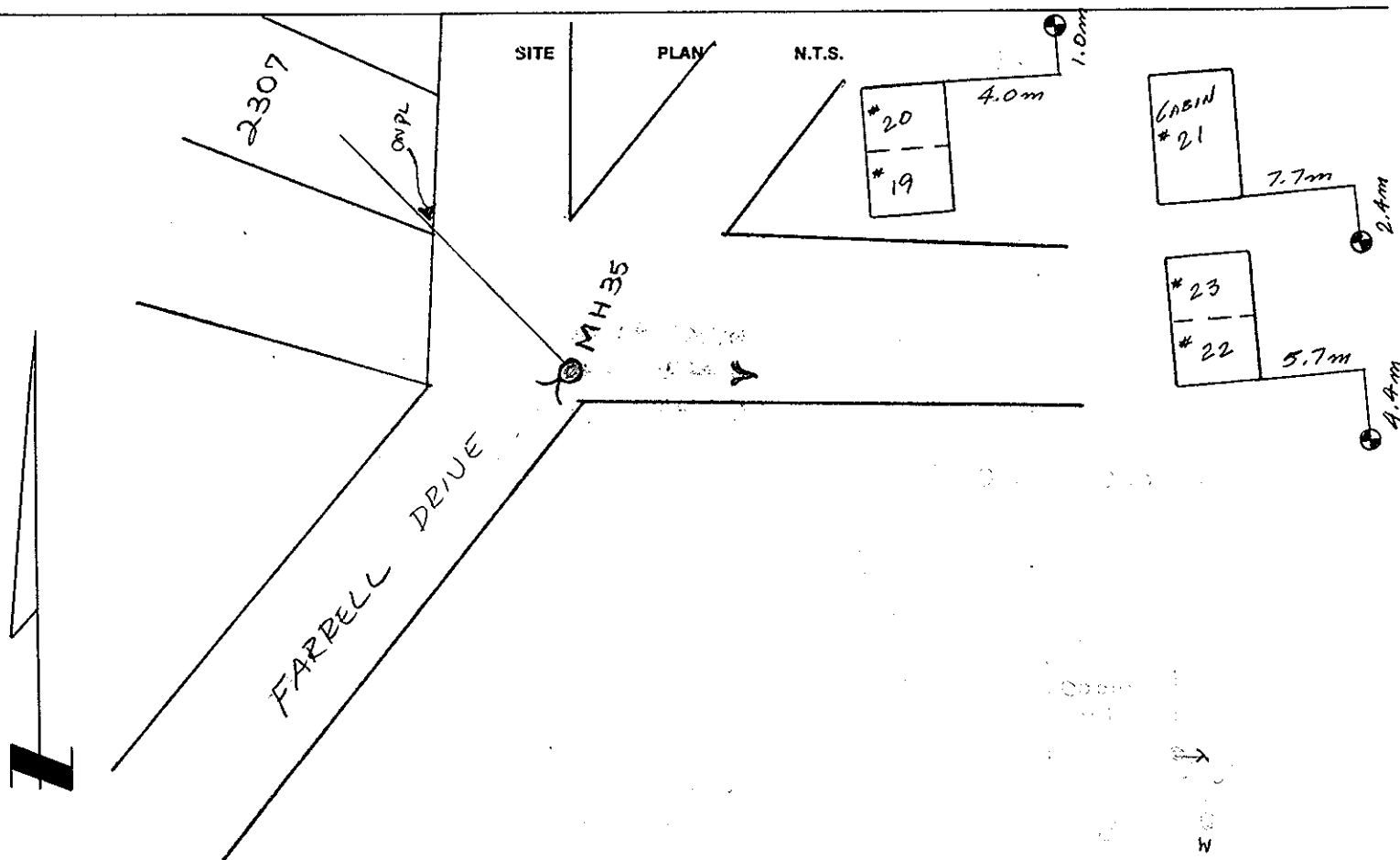
B.C. TELEPHONE      04      UNDERGROUND CONNECTION

**INLAND GAS** Specifics at Inland Natural Gas

### Information Sheets:

**Comments:**

THE INFORMATION CONTAINED HEREIN IS FOR INTERNAL  
USE ONLY. NOT TO BE RELIED UPON UNLESS CONFIRMED  
BY SITE INSPECTION AND/OR INVESTIGATION.



1. Distance from M.H. 35 to connection point is 7' ft. toward M.H.
2. Calculated invert of main to conn. pt. is \_\_\_\_\_
3. Main Size at connection point is \_\_\_\_\_ ins.
4. Conn. invert at half diameter (Crown) of main is \_\_\_\_\_
5. Add to (4) allowance of 0.2 for 1/8 bend. Adjusted invert now \_\_\_\_\_
6. Dist. from main to P/L equals 124 ft. at \_\_\_\_\_ in/ft. gives rise of \_\_\_\_\_
7. Item (5) plus (6) equals Calculated Elev. of conn. inv. at P/L equals \_\_\_\_\_
13. Elev. of ref. hub top \_\_\_\_\_
14. Elev. of invert at P/line depth 7'
15. Difference or cut below at property line \_\_\_\_\_
16. Survey Date \_\_\_\_\_ 19 \_\_\_\_\_ Book Ref. \_\_\_\_\_ by \_\_\_\_\_
17. Cut at P/Line in feet and inches \_\_\_\_\_

**Sanitary History:** installed 1971; flooded in 1972; in case of high water, connections must be plugged.  
 Occurrences of plugged lift station due to rags etc coming from Tractor count; last recorded plugging March ~~1974~~ 1975

**Water History:** installed 1955; no record on size of connection.  
 Water shut off 1974 because of leak. Turned on again.  
 - JUNE 17/86 - LOCATION BY D.H.

**Storm History:**