



City of Prince George
History Sheet

| | |
|--------|-----------|
| PID: | 012035980 |
| SD/MU: | |
| WO: | |

Civic Address: 8391 Cinch Loop

Legal Description: Lot: 15 District Lot: 624 Plan: 15340

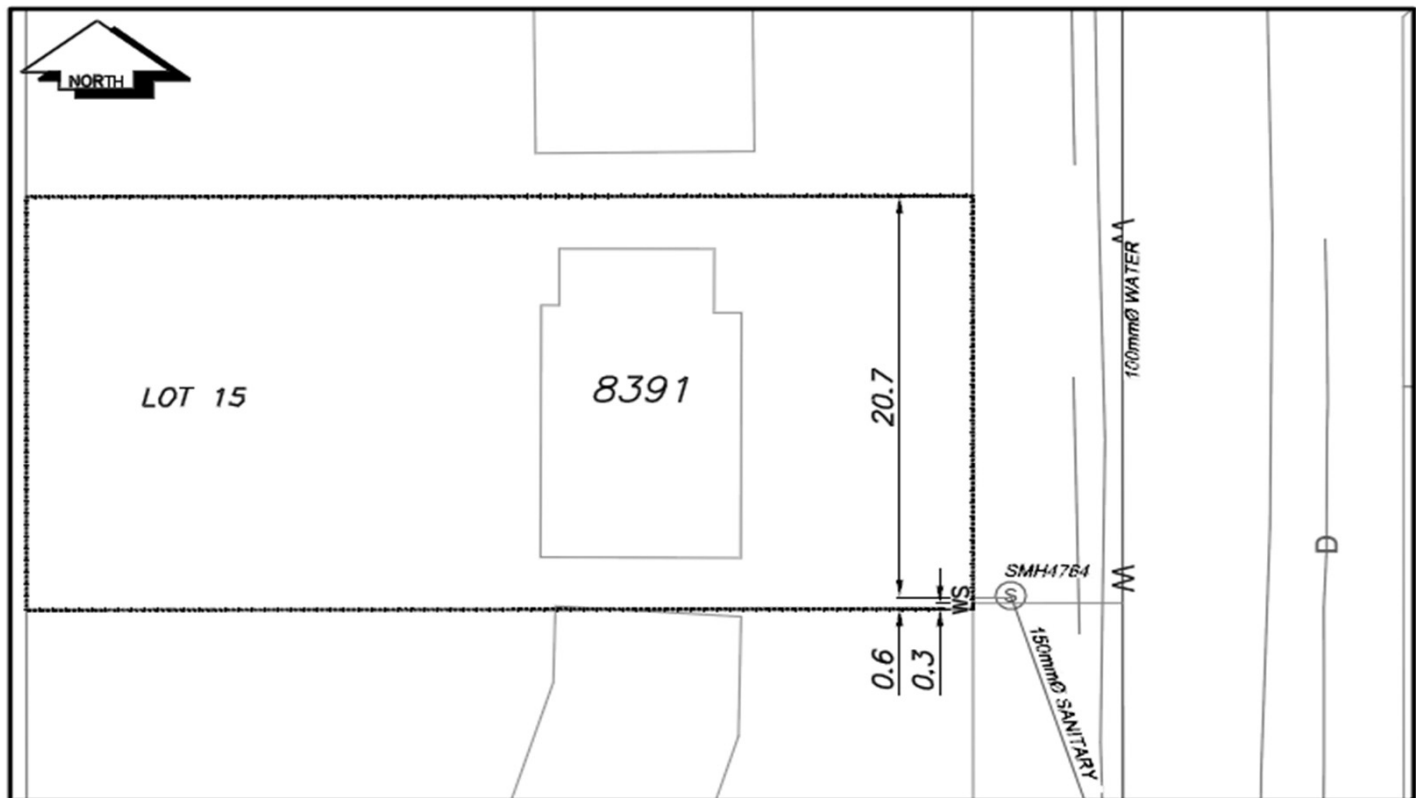
| Service Type | Diameter (mm) | Material | Invert Elev at main (m) | Invert Elev at property line (m) | Invert Elev at service end (m) | Distance into property (m) | Installation Date |
|--------------|---------------|----------|-------------------------|----------------------------------|--------------------------------|----------------------------|-------------------|
| Sanitary | 100mm | AC | - | - | - | - | December 1980 |
| Water | 20mm | Copper | - | - | - | - | December 1980 |
| Storm | N/A | N/A | - | - | - | - | |

| Service Connection Location | Sanitary (m) | Storm (m) |
|---|--------------|-----------|
| 100mm sanitary service connected to san MH4764 | - | |
| Distance from downstream Stm MH - towards upstream Stm MH - | | |

| Power | Size | Communications | Size | Cable | Size | Gas | Size |
|------------------|------|------------------|------|------------------|------|----------|------|
| BC Hydro | - | Telus | - | Shaw | - | FortisBC | - |
| Overhead Service | | Overhead Service | | Overhead Service | | | |

| | | |
|--|--------------|---|
| Installed by: | Survey Date: | - |
| Comments: Water service location confirmed April 27, 2018. | | |
| | | |
| | | |

NOT TO SCALE The information contained herein is for internal use only.
Not to be relied on unless confirmed by site inspection and/or investigation.



| | | |
|---------------|--------------------------------|-----------------------|
| CS° CURB STOP | — M — WATER SERVICE | — D — STORM SERVICE |
| CO° CLEAN OUT | - - - S - - - SANITARY SERVICE | — G — GAS |
| ⊗ WATER VALVE | ⊗ FIRE HYDRANT | - - - - - ENCUMBRANCE |

NOT TO SCALE