



# City of Prince George History Sheet

PID:	011853751
MU:	101923
WO:	93739

Civic Address: 1717 Spruce St

Legal Description: Lot: PCL C Block: 278 District Lot: 1268 Plan: 278

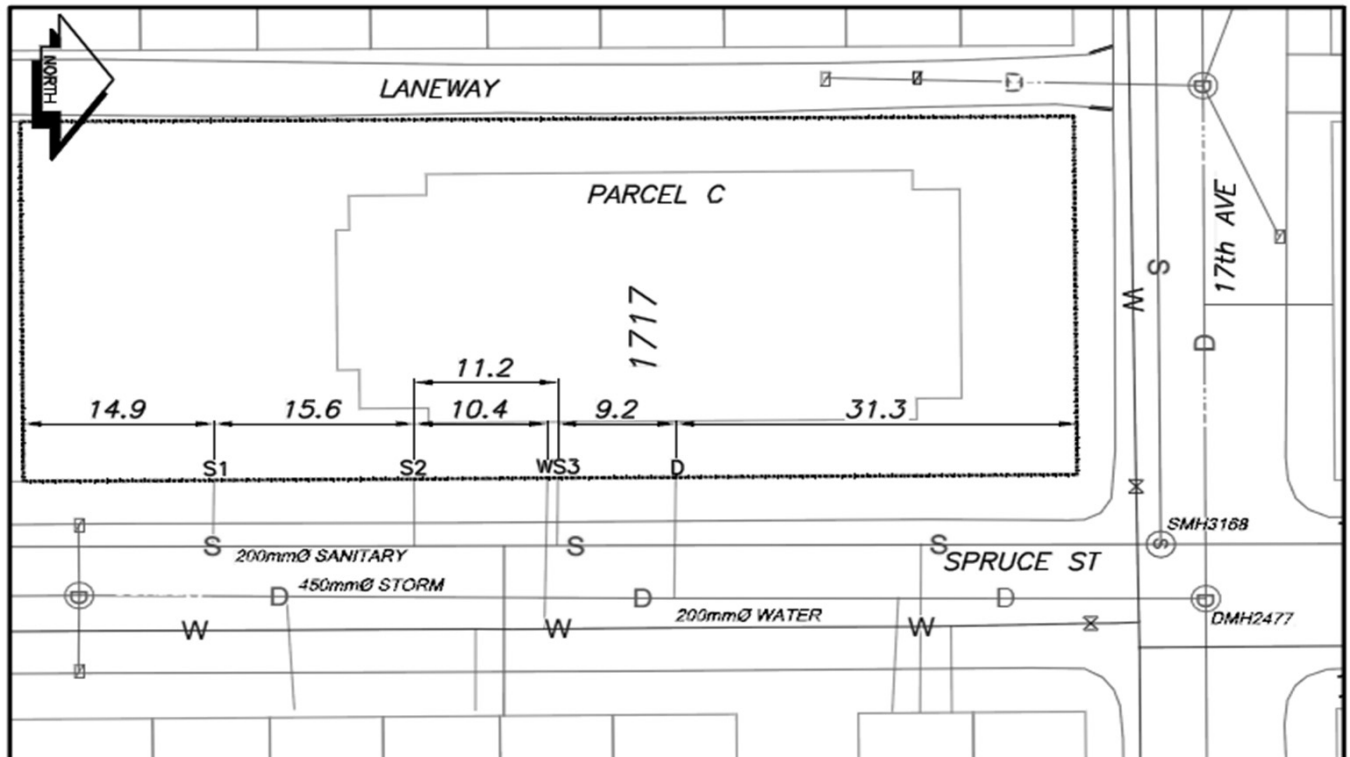
Service Type	Diameter (mm)	Material	Invert Elev at main (m)	Invert Elev at property line (m)	Invert Depth at service end (m)	Distance into property (m)	Installation Date
Sanitary (S1)	100mm	AC	-	568.46	1.98	-	December 1960
Sanitary (S2)	100mm	AC	-	268.45	2.13	-	December 1960
Sanitary (S3)	100mm	AC	-	568.56	2.44	-	December 1960
Water	50mm	Copper	-	-	-	-	July 2017
Storm	150mm	N/A	-	-	-	-	December 1966

Service Connection Location				Sanitary (m)	Storm (m)
Distance from downstream San MH	3168	towards upstream San MH	3171	47.10	
Distance from downstream San MH	3168	towards upstream San MH	3171	58.80	
Distance from downstream San MH	3168	towards upstream San MH	3171	74.10	
Distance from downstream Stm MH	2477	towards upstream Stm MH	2476		41.80

Power	Size	Communications	Size	Cable	Size	Gas	Size
BC Hydro	-	Telus	-	Shaw	-	FortisBC	-
Overhead Service		Overhead Service		Overhead Service			

Installed by:	City of Prince George forces	Survey Date:	-
Comments:			

**NOT TO SCALE** The information contained herein is for internal use only.  
Not to be relied on unless confirmed by site inspection and/or investigation.



CS <sup>o</sup> CURB STOP	— W — WATER SERVICE	— S — STORM SERVICE
CO <sup>o</sup> CLEAN OUT	- - - - - SANITARY SERVICE	— G — GAS
⊗ WATER VALVE	⊗ FIRE HYDRANT	- - - - - ENCUMBRANCE

**NOT TO SCALE**