



City of Prince George History Sheet

| | |
|--------|-----------|
| PID: | 011830042 |
| | 011830051 |
| SD/MU: | |
| WO: | |

Civic Address: 1769 Gorse St

Legal Description: Lot: 9, 10 Block: 292 District Lot: 343 Plan: 1268

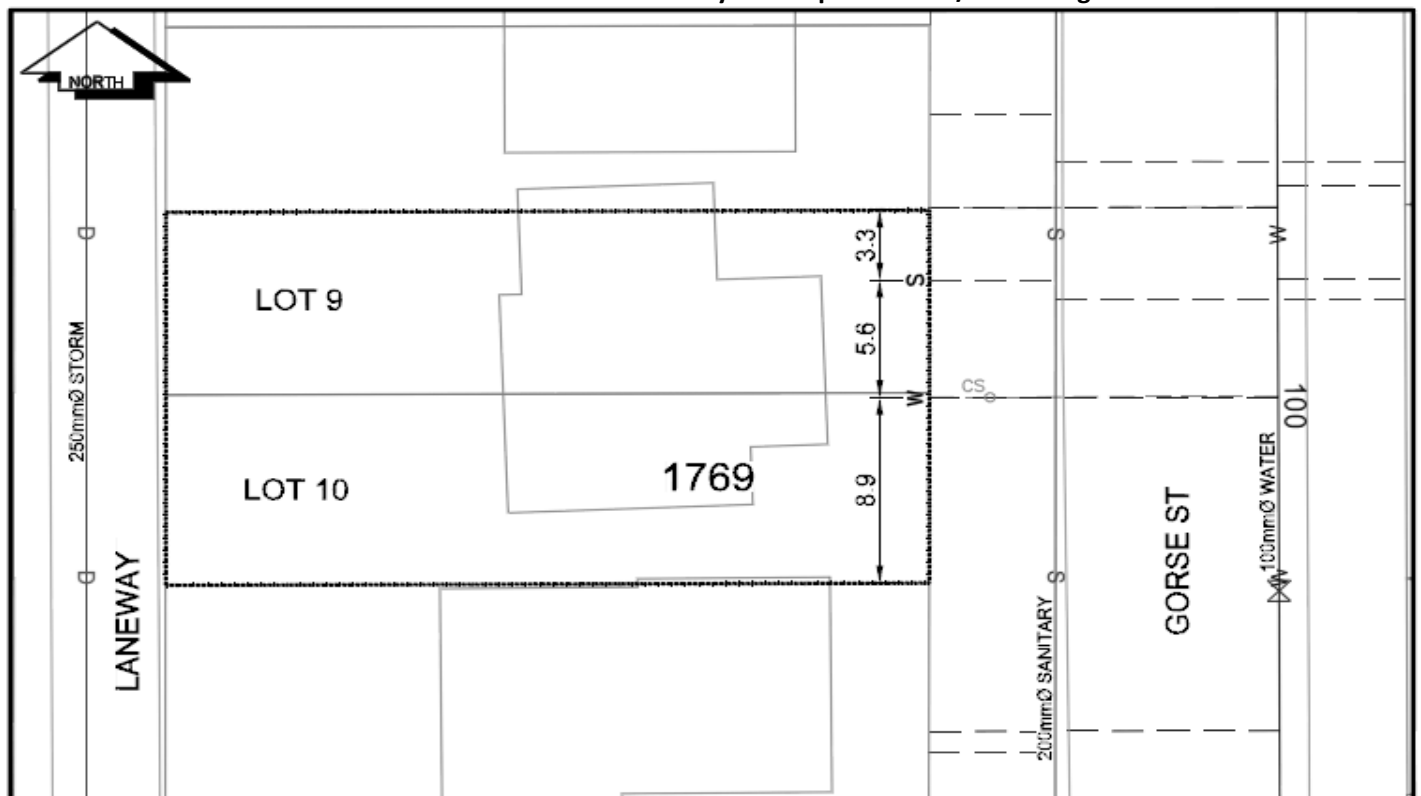
| Service Type | Diameter (mm) | Material | Invert Elev at main (m) | Invert Elev at property line (m) | Invert Depth at service end (m) | Distance into property (m) | Installation Date |
|--------------|---------------|----------|-------------------------|----------------------------------|---------------------------------|----------------------------|-------------------|
| Sanitary | 100mm | AC | - | 575.23 | 1.71 | - | December 1955 |
| Water | 20mm | Copper | - | - | - | - | December 1955 |
| Storm | N/A | N/A | - | - | - | - | |

| Service Connection Location | | | | Sanitary (m) | Storm (m) |
|---------------------------------|------|-------------------------|------|--------------|-----------|
| Distance from downstream San MH | 3211 | towards upstream San MH | 3210 | 28.64 | |
| Distance from downstream Stm MH | - | towards upstream Stm MH | - | | |

| Power | Size | Communications | Size | Cable | Size | Gas | Size |
|------------------|------|------------------|------|------------------|------|----------|------|
| BC Hydro | - | Telus | - | Shaw | - | FortisBC | - |
| Overhead Service | | Overhead Service | | Overhead Service | | | |

| | | | |
|--|--|--------------|---|
| Installed by: | | Survey Date: | - |
| Comments: Water service location confirm August 2017 | | | |
| | | | |
| | | | |

NOT TO SCALE The information contained herein is for internal use only.
Not to be relied on unless confirmed by site inspection and/or investigation.



| | | |
|---------------------------|------------------------|---------------------|
| CS ^o CURB STOP | --- W WATER SERVICE | --- S STORM SERVICE |
| CO ^o CLEAN OUT | --- S SANITARY SERVICE | --- G GAS |
| ⊗ WATER VALVE | ⊗ FIRE HYDRANT | --- ENCUMBRANCE |

NOT TO SCALE