



City of Prince George
History Sheet

PID:	011351331
SD/MU:	
WO:	

Civic Address: 101 17th Ave
1950 Gorse St

Legal Description: Lot: PCL X (REM (PL 1268)) District Lot: 343 Plan: 17962

Service Type	Diameter (mm)	Material	Invert Elev at main (m)	Invert Elev at property line (m)	Invert Depth at service end (m)	Distance into property (m)	Installation Date
Sanitary	150mm	AC	572.48	575.15	1.68	-	September 1960
Water (W1)	25mm	Copper	-	-	-	-	January 1961
Water (W2)	40mm	Cast Iron	-	-	-	-	January 1959
Water (W3)	150mm	PVC	-	-	-	-	October 2012
Water (W4)	40mm	Cast Iron	-	-	-	-	January 1961
Water (W%)	150mm	AC	-	-	-	-	January 1956
Storm (Gorse)	200mm	AC	-	-	-	-	January 1973

Service Connection Location	Sanitary (m)	Storm (m)
150mm Sanitary service connected to San MH3205	-	
200mm Storm service connected to Stm MH2633		

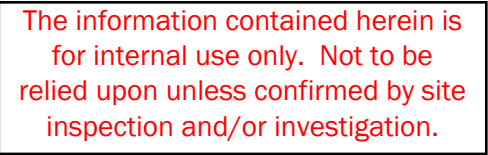
Power	Size	Communications	Size	Cable	Size	Gas	Size
BC Hydro	-	Telus	-	Shaw	-	FortisBC	-
Overhead Service		Overhead Service		Overhead Service			

Installed by:	City of Prince George forces	Survey Date:	-
Comments:			

NOT TO SCALE The information contained herein is for internal use only.
Not to be relied on unless confirmed by site inspection and/or investigation.

See servicing sketch on page 2

NOT TO SCALE

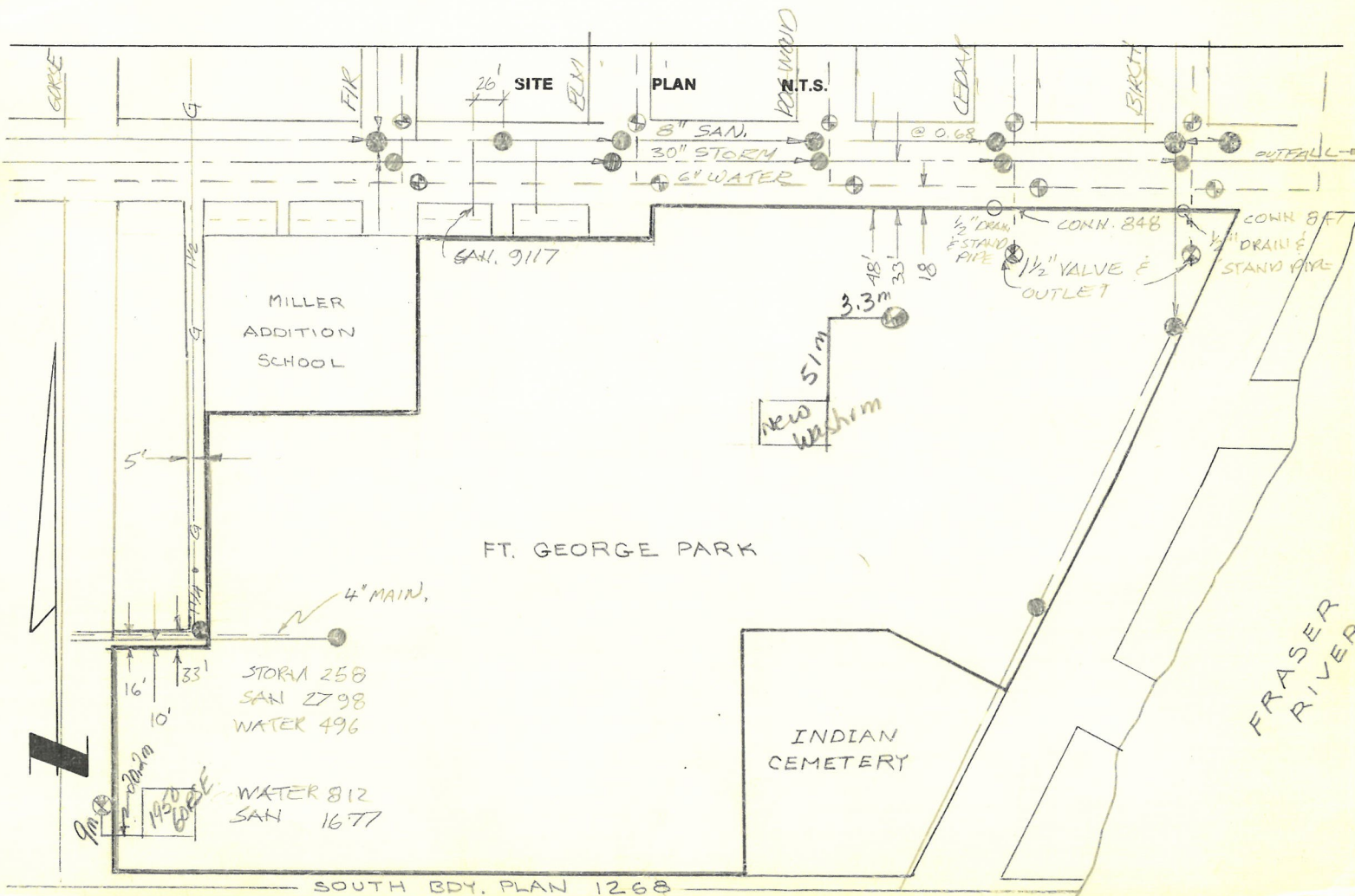


NOT TO SCALE

City of Prince George HISTORY SHEET

011351331
D

SHEET NUMBER	5135		Roll Number	
Legal:	LOT'S	BLOCK	D.L.	PLAN
	706 X		343	1268
Address:	FT. GEORGE PARK			
Sanitary Connection:	#	SIZE	MATERIAL	INV. CONNECTED
	1677 2640 2798 3117	15206	150mm	
Water Connection:	#	SIZE	MATERIAL	METER CONNECTED
	496 812 847	15206	25mm	
Storm Connection:	#	SIZE	MATERIAL	INV. CONNECTED
	258			
Cash Receipt No's:	WATER	618	SANITARY	STORM
			2798-89 9117-479	619
CURB FROM PROPERTY LINE	PAVEMENT WIDTH			
B.C. HYDRO	UNDERGROUND CONNECTION			
B.C. TELEPHONE	UNDERGROUND CONNECTION			
INLAND GAS				
Information Sheets:				
Comments:				



SANITARY & STORM INVERT CALCULATIONS

SANITARY

STORM

	1677	2640	2798	9117	258
1. Distance from M.H. to connection point is ft. toward M.H.	204.46'	225	72-9.265'	78-9.26'	
2. Calculated invert of main to conn. pt. is	1878.22	1882.90		83.23	
3. Main Size at connection point is ins.				.33	
4. Conn. invert at half diameter (Crown) of main is				83.56	
5. Add to (4) allowance of 0.2 for 1/8 bend. Adjusted invert now				83.76	
6. Dist. from main to P/L equals ft. at in/ft. gives rise of				.51	
7. Item (5) plus (6) equals Calculated Elev. of conn. inv. at P/L equals				84.27	
13. Elev. of ref. hub top <u>GROUND</u>	1889.01	1891.66		93.57	
14. Elev. of invert at P/line	1883.51	1887.00		84.27	
15. Difference or cut below at property line	5.50	4.66		9.30	
16. Survey Date 19 Book Ref. by	SEPT 27 1960	Nov 14/60 L80-27	Oct 3/60 56-37	JUL 29/60 318-58	SEPT 23/60
17. Cut at P/Line in feet and inches				9'0"	

Sanitary History:

#619 - 51m N 4m E 8' cut @ PL - common trench w wtr.

Water History:

CONN. 812 DATE INSTALLED SEPT 28, 1960 THAW WIRE 'Y'
 CONN. 848 DATE INSTALLED MAY 1958
 CONN. 847 DATE INSTALLED MAY 1958

May 15/84 location on 1950 Gully by D. Hale - 20mm Cu.
 June 7/84 Connection @ 17' - changed 2' of galv to 1 1/2" copper -

Storm History:

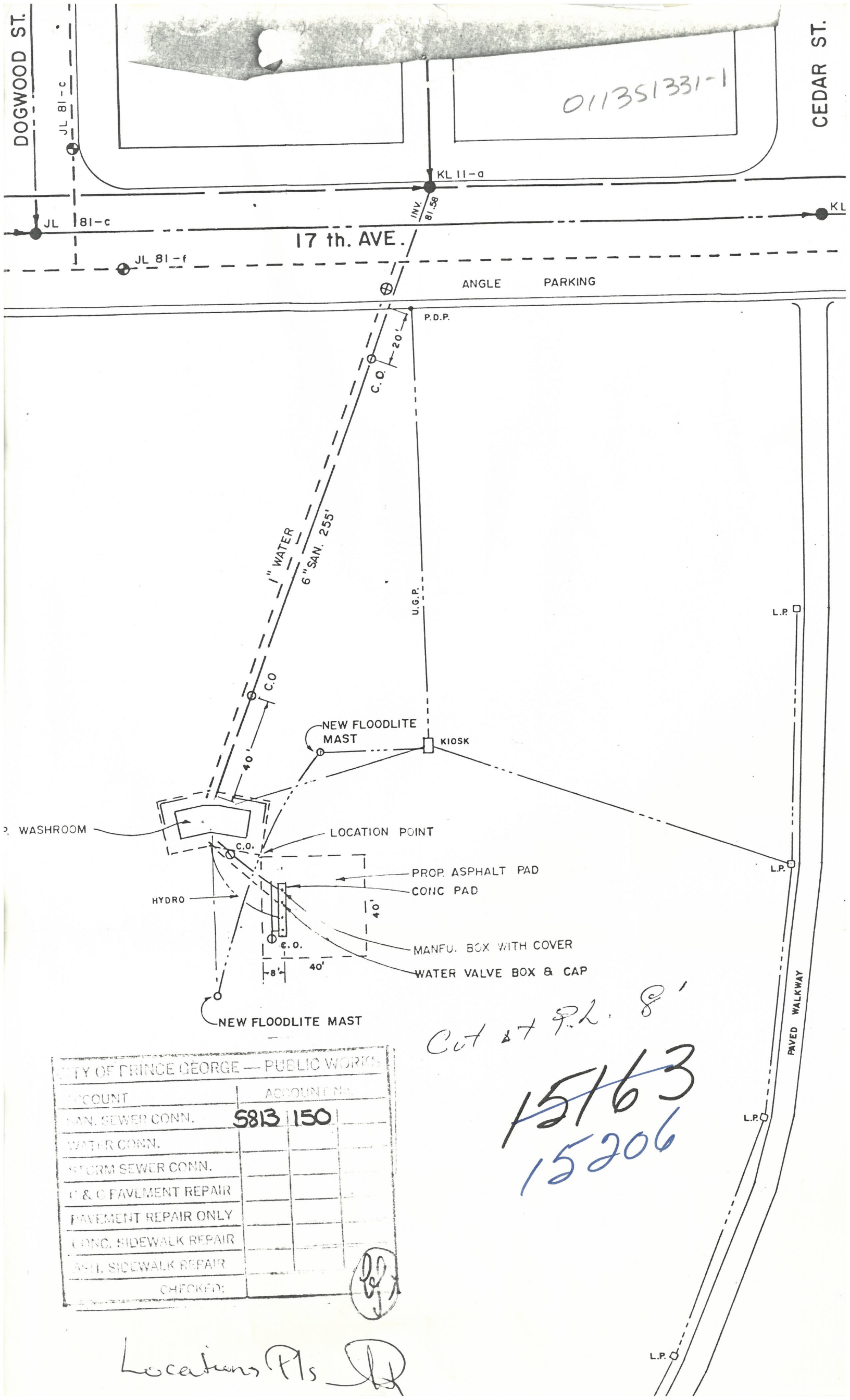
DOGWOOD ST.

CEDAR ST.

011351331-1

17 th. AVE.

ANGLE PARKING



CITY OF PRINCE GEORGE — PUBLIC WORKS		
ACCOUNT	ACCOUNT NO.	
MAN. SEWER CONN.	5813	150
WATER CONN.		
STORM SEWER CONN.		
C & G PAVEMENT REPAIR		
PAVEMENT REPAIR ONLY		
CONC. SIDEWALK REPAIR		
ASPH. SIDEWALK REPAIR		
CHECKED:		

Locations Pls

Cut at P.L. 8'
~~15163~~
15206