



# City of Prince George History Sheet

PID:	010480731
SD/MU:	101385/101457
WO:	71451

Civic Address: 2424, 2432, 2440 Nicholson St

Legal Description: Lot: 70 District Lot: 8171 Plan: 19517

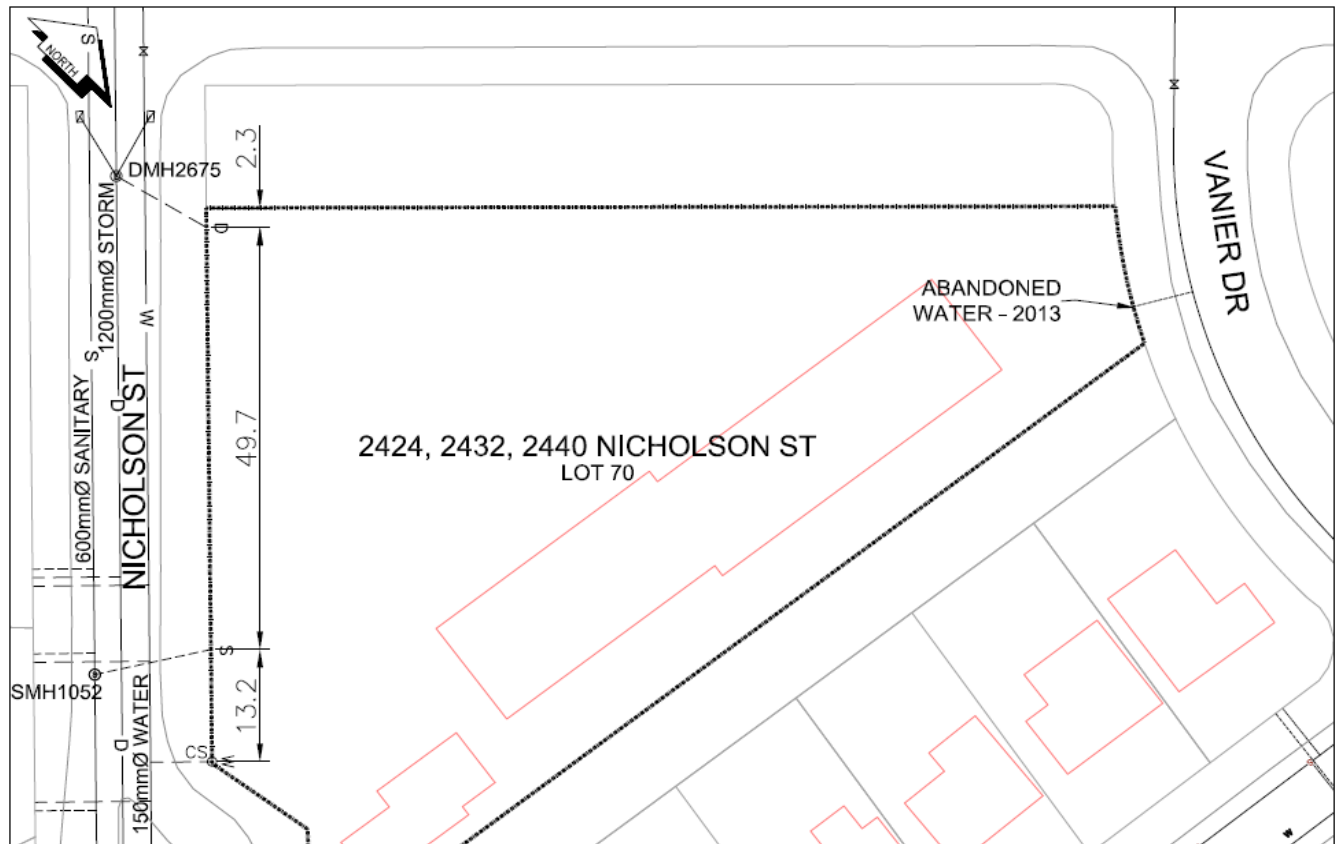
Service Type	Diameter (mm)	Material	Invert Elev at main (m)	Depth of cut at property line (m)	Invert Elev at service end (m)	Distance into property (m)	Installation Date
Sanitary	150mm	PVC	-	4.89	592.38	-	September 1972
Water	100mm	PVC	-	-	-	-	July 2013
Storm	200mm	PVC	-	5.85	590.84	-	June 2013

Service Connection Location	Sanitary (m)	Storm (m)
Sanitary service is connected to San MH 1052	-	
Storm service is connected to Stm MH 2675		

Power	Size	Communications	Size	Cable	Size	Gas	Size
BC Hydro	-	Telus	-	Shaw	-	FortisBC	-
Overhead Service		Overhead Service		Overhead Service			

Installed by:	City of Prince George forces	Survey Date:	-
Comments:	50mm water service of Vanier Dr abandoned in 2013		

**NOT TO SCALE** The information contained herein is for internal use only.  
Not to be relied on unless confirmed by site inspection and/or investigation.



LEGEND:	CS <sup>o</sup> CURB STOP	--- W WATER SERVICE	--- S STORM SERVICE
	CO <sup>o</sup> CLEAN OUT	--- S SANITARY SERVICE	⊗ WATER VALVE

**NOT TO SCALE**