



# City of Prince George History Sheet

PID:	009788808
PID:	009788778
WO:	

Civic Address: 598 Watrous St

Legal Description: Lot: 13 District Lot: 343m Block 70m Plan: 1268

Lot: 12 District Lot: 343m Block 70m Plan: 1268

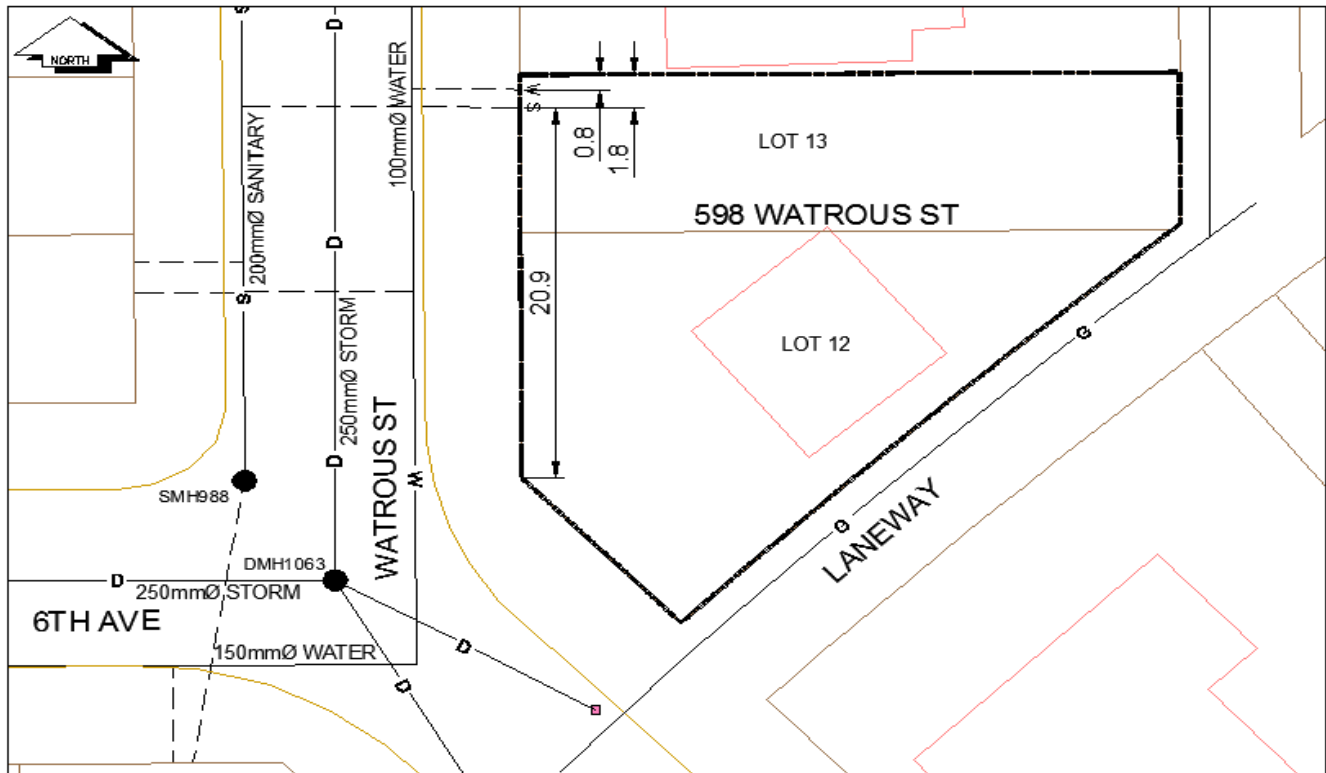
Service Type	Diameter (mm)	Material	Invert Elev at main (m)	Depth of Cut at property line (m)	Invert Elev at service end (m)	Distance into property (m)	Installation Date
Sanitary	100mm	PVC	-	1.95	-	-	January 1957
Water	20mm	Copper	-	-	-	-	January 1975
Storm	N/A	N/A	-	-	-	-	

Service Connection Location				Sanitary (m)	Storm (m)
Distance from downstream San MH	986	towards upstream San MH	988	81.70	
Distance from downstream Stm MH	-	towards upstream Stm MH	-		

Power	Size	Communications	Size	Cable	Size	Gas	Size
BC Hydro	-	Telus	-	Shaw	-	FortisBC	-
Overhead Service		Overhead Service		Overhead Service			

Installed by:	City of Prince George forces	Survey Date:	January 1, 1957
Comments:			

**NOT TO SCALE** The information contained herein is for internal use only.  
Not to be relied on unless confirmed by site inspection and/or investigation.



CS <sup>o</sup> CURB STOP	--- WATER SERVICE	--- STORM SERVICE
CO <sup>o</sup> CLEAN OUT	--- SANITARY SERVICE	--- GAS

**NOT TO SCALE**