



# City of Prince George History Sheet

|        |           |
|--------|-----------|
| PID:   | 009687939 |
|        | 009687904 |
| SD/MU: |           |
| WO:    | 5013986   |

Civic Address: 588, 590 Alward St

Legal Description: Lot: 11, 12 Block: 68 District Lot: 343 Plan: 1268

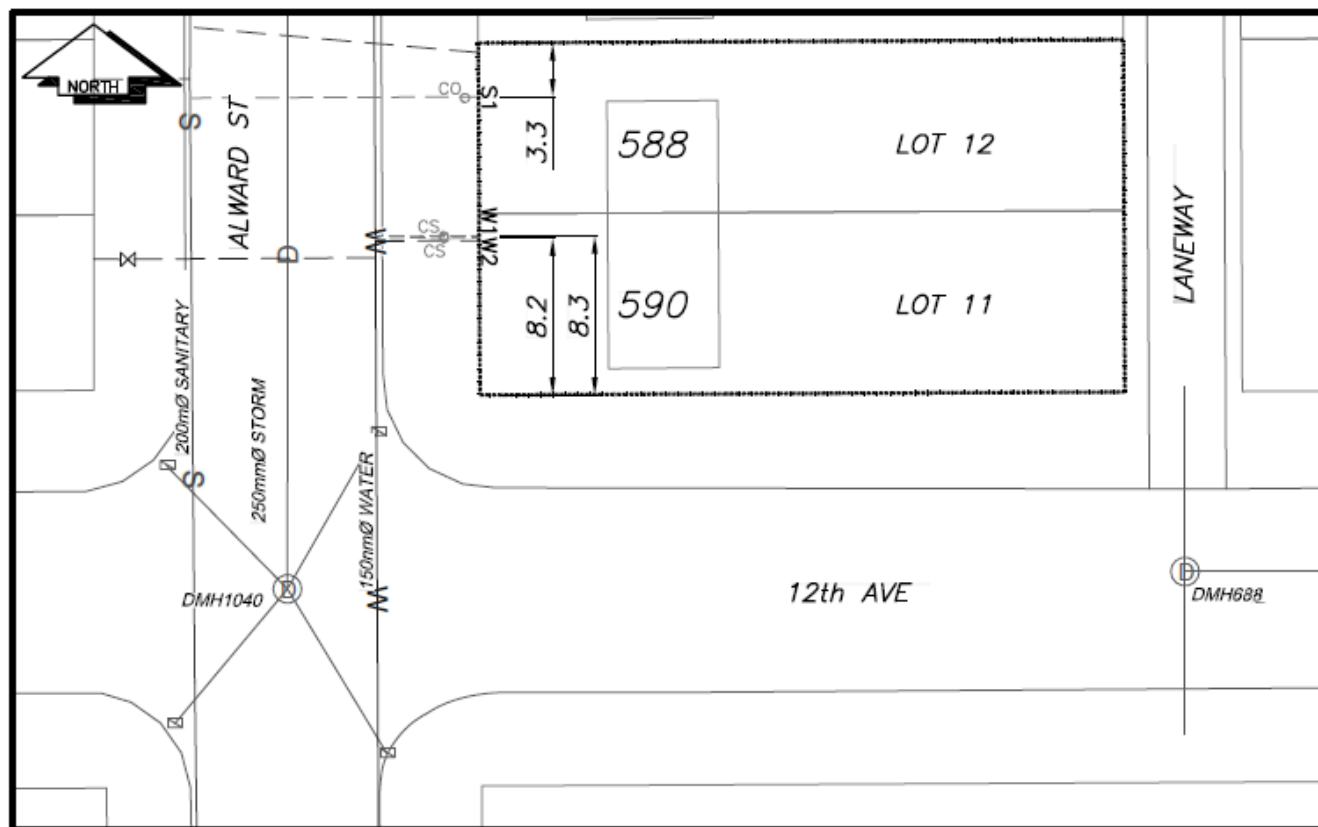
| Service Type  | Diameter (mm) | Material | Invert Elev at main (m) | Invert Elev at property line (m) | Invert Elev at service end (m) | Distance into property (m) | Installation Date |
|---------------|---------------|----------|-------------------------|----------------------------------|--------------------------------|----------------------------|-------------------|
| Sanitary (S1) | 100mm         | PVC      | 582.74                  | 587.42                           | -                              | -                          | August 2019       |
| Water (W1)    | 20mm          | Copper   | -                       | -                                | -                              | -                          | December 1957     |
| Water (W2)    | 20mm          | Copper   | -                       | -                                | -                              | -                          | December 1957     |
| Storm         | N/A           | N/A      | -                       | -                                | -                              | -                          |                   |

| Service Connection Location     |      |                         |     | Sanitary (m) | Storm (m) |
|---------------------------------|------|-------------------------|-----|--------------|-----------|
| Distance from downstream San MH | 1672 | towards upstream San MH | 984 | 38.72        |           |
| Distance from downstream Stm MH | -    | towards upstream Stm MH | -   |              |           |

| Power            | Size | Communications   | Size | Cable            | Size | Gas      | Size |
|------------------|------|------------------|------|------------------|------|----------|------|
| BC Hydro         | -    | Telus            | -    | Shaw             | -    | FortisBC | -    |
| Overhead Service |      | Overhead Service |      | Overhead Service |      |          |      |

|               |   |              |   |
|---------------|---|--------------|---|
| Installed by: | Sanitary service (S1) installed by City of Prince George forces | Survey Date: | - |
| Comments:     |   |              |   |
|               |   |              |   |
|               |   |              |   |

**NOT TO SCALE** The information contained herein is for internal use only.  
Not to be relied on unless confirmed by site inspection and/or investigation.



|    |             |         |                  |         |               |
|----|-------------|---------|------------------|---------|---------------|
| CS | CURB STOP   | —       | WATER SERVICE    | —       | STORM SERVICE |
| CO | CLEAN OUT   | - - - - | SANITARY SERVICE | —G—     | GAS           |
| ⊗  | WATER VALVE | —X—     | FIRE HYDRANT     | - - - - | ENCUMBRANCE   |

**NOT TO SCALE**