



City of Prince George
History Sheet

PID:	008603693
SD/MU:	
WO:	

Civic Address: 8053 Newcastle Cres

Legal Description: Lot: 14 District Lot: 2013 Plan: 23117

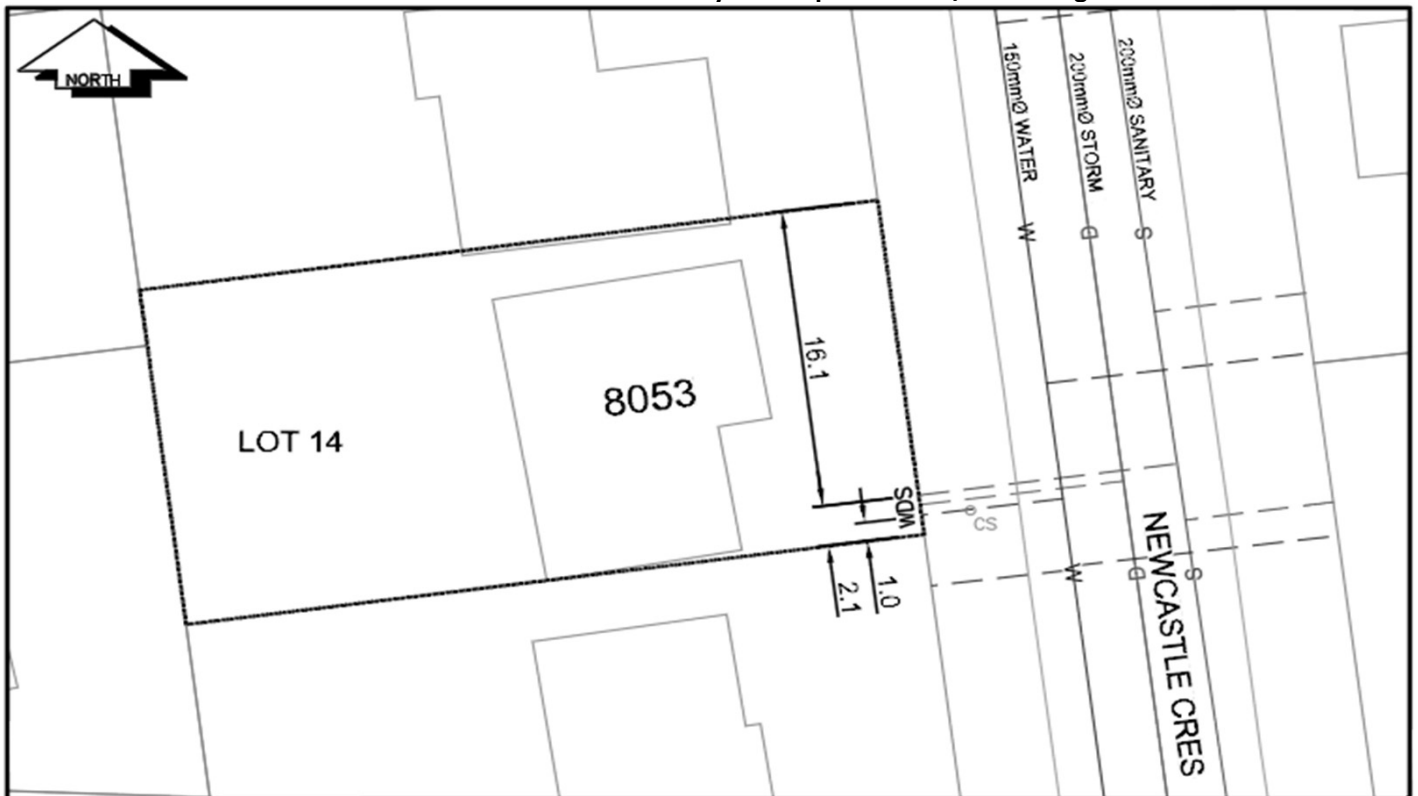
Service Type	Diameter (mm)	Material	Invert Elev at main (m)	Invert Elev at property line (m)	Invert Elev at service end (m)	Distance into property (m)	Installation Date
Sanitary	100mm	PVC	-	-	-	-	January 1978
Water	20mm	Copper	-	-	-	-	January 1978
Storm	100mm	PVC	-	-	-	-	January 1977

Service Connection Location				Sanitary (m)	Storm (m)
Distance from downstream San MH	4636	towards upstream San MH	4640	63.12	
Distance from downstream Stm MH	-	towards upstream Stm MH	-		

Power	Size	Communications	Size	Cable	Size	Gas	Size
BC Hydro	-	Telus	-	Shaw	-	FortisBC	-
Underground Service		Underground Service		Underground Service			

Installed by:	Survey Date:	-
Comments: Water service location confirmed May 01, 2017.		
Although no locate for Storm service was possible, the old History Sheet documented a 100mm storm service		

NOT TO SCALE The information contained herein is for internal use only.
Not to be relied on unless confirmed by site inspection and/or investigation.



LEGEND:	
CS ^o	CURB STOP
CO ^o	CLEAN OUT
⊗	WATER VALVE
---	W WATER SERVICE
---	S SANITARY SERVICE
⊗	FIRE HYDRANT
---	D STORM SERVICE
---	G GAS
---	ENCUMBRANCE

NOT TO SCALE