



# Lot Services Sketch

PID:	0028 579 539
------	--------------

## CITY OF PRINCE GEORGE

Civic Address: 7405 Kelly Road

Legal Description: Lot: 1 District Lot: 2424 Plan: PL 23232

Service Type	Diameter (mm)	Material	Invert Elev @ Main (m)	Invert Elev @ Property Line (m)	Invert Elev @ Service End (m)	Distance into Property (m)	Installation Date
Sanitary	200	PVC	-	-	-	-	-
Water	250	C900 PVC	755.91	755.01	754.63	3.3	AUG 2022
Storm	375	-	-	-	-	-	-

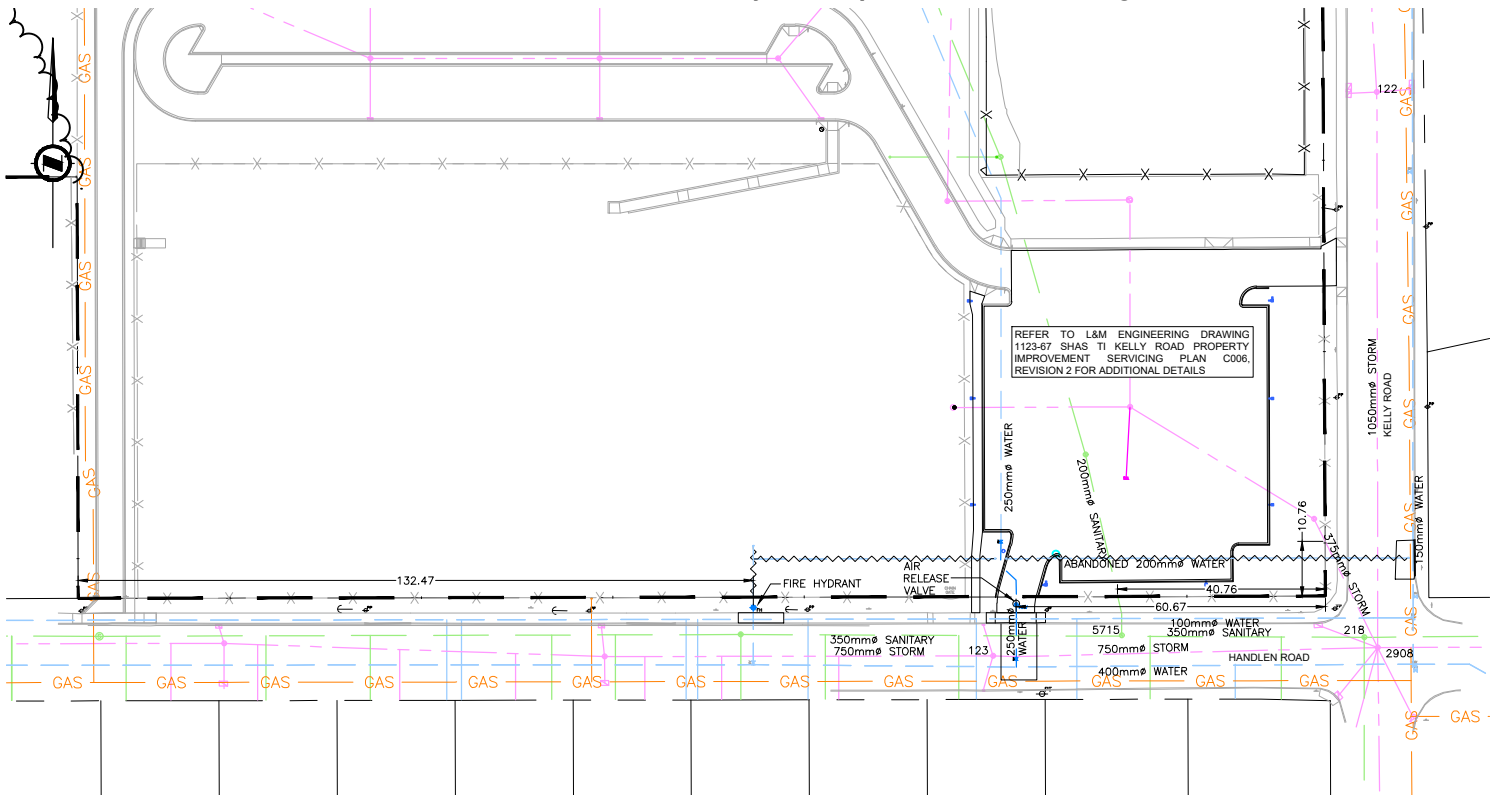
Sanitary Service Connection Location Notes	Storm Service Connection Location Notes
Distance from downstream SAN MH #: -	Distance from downstream STM MH #: N/A
Distance to upstream SAN MH #: -	Distance to upstream STM MH #: N/A

Miscellaneous Utilities			
Power	Communications	Cable	Gas
BC Hydro	TELUS	Shaw Cable	FortisBC
Underground Service	Underground Service	Underground Service	Underground Service

Installation By:	IDL PROJECTS INC.	Draft Date:	-	Survey Date:	AUG 2022
------------------	-------------------	-------------	---	--------------	----------

Comments:					

**NOT TO SCALE** The information contained herein is for internal use only.  
Not to be relied on unless confirmed by site inspection and/or investigation.




W WATER SERVICE AND CURB STOP (CS)	WATER MAIN
WATER HYDRANT LEAD, VALVE, HYDRANT	SANITARY MAIN
S SANITARY SERVICE AND CLEAN OUT (CO)	STORM MAIN
D STORM SERVICE	ENCUMBRANCE
ROAD EDGE	

**NOTES:**  
 1. THE LOCATION OF EXISTING UTILITIES, AS SHOWN ON THE DESIGN DRAWINGS, ARE APPROXIMATE ONLY AND MAY NOT BE FULLY ACCURATE OR COMPLETE.

**LEGEND**

NO.	DATE (D/M/Y)	REVISION	BY
2	14/6/23	RECORD DRAWING	JPA
1	27/6/22	ISSUED FOR CONSTRUCTION	JPA
0	26/4/22	ISSUED FOR TENDER	JPA

**RECORD DRAWING**



**L&M ENGINEERING LIMITED**

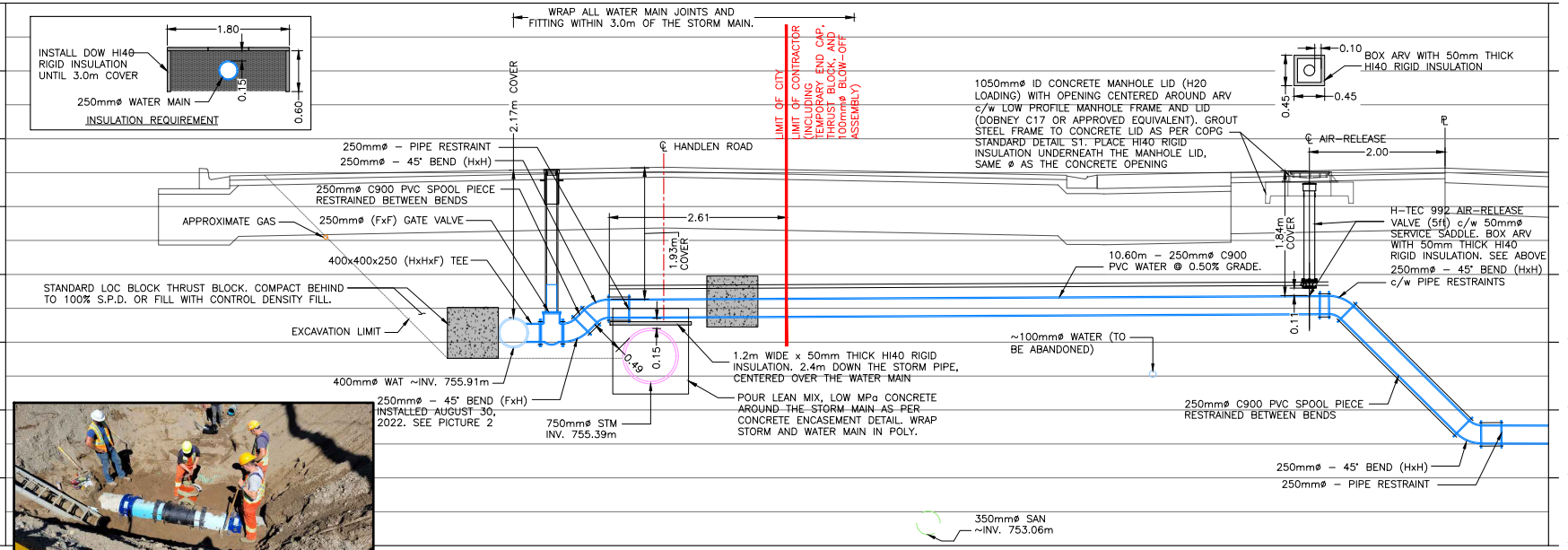
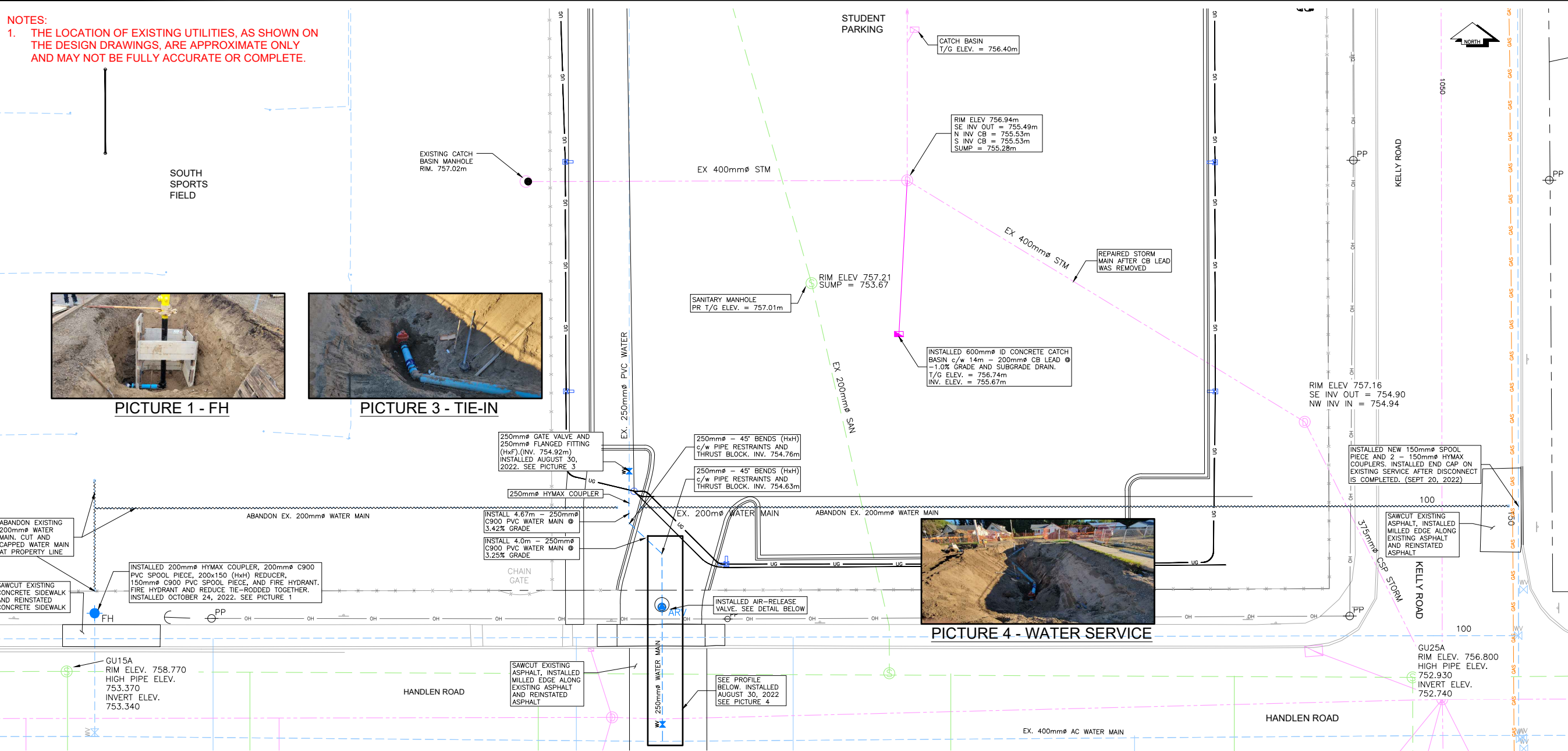
CONSULTANTS PROJECT No.: 1123-67

DRAWN:	JPA
CHECKED:	TAF
ENGINEER:	TAF
DATE:	01/01/2022
SCALE:	FULL: 1:200
SCALE:	HALF: 1:400

PERMIT TO PRACTICE NO 100237

SCHOOL DISTRICT No.57  
 SHAS TI / KELLY ROAD  
 SECONDARY SCHOOL  
 PROPERTY IMPROVEMENTS  
 STUDENT PARKING IMPROVEMENTS  
 SERVICING PLAN

DRAWING No.  
**C006**



**HANDLEN ROAD WATER MAIN TIE-IN - PROFILE**  
 1:100

THE SEAL AND SIGNATURE OF THE UNDERSIGNED ON THIS DRAWING CERTIFIES THAT THE DESIGN INFORMATION CONTAINED IN THESE DRAWINGS ACCURATELY REFLECTS THE ORIGINAL DESIGN AND THE MATERIAL DESIGN CHANGES MADE DURING CONSTRUCTION, THAT WERE BROUGHT TO THE UNDERSIGNED'S ATTENTION. THESE DRAWINGS ARE INTENDED TO INCORPORATE ADDENDA, CHANGE ORDERS AND OTHER MATERIAL DESIGN CHANGES, BUT NOT NECESSARILY ALL SITE INSTRUCTIONS. THE UNDERSIGNED DOES NOT WARRANT OR GUARANTEE, NOR ACCEPT ANY RESPONSIBILITY FOR THE ACCURACY OR COMPLETENESS OF THE AS-CONSTRUCTED INFORMATION SUPPLIED BY OTHERS CONTAINED IN THESE DRAWINGS, BUT DOES, BY SEALING AND SIGNING, CERTIFY THAT THE AS-CONSTRUCTED INFORMATION, IF ACCURATE AND COMPLETE, PROVIDES AN AS-CONSTRUCTED SYSTEM WHICH SUBSTANTIALLY COMPLIES IN ALL MATERIAL RESPECTS WITH THE ORIGINAL DESIGN INTENT.

G:\User Files\1100\1123 - SDPT\07 - 0055 Replacement Project - Phase 2\04 - As-built\Phase 2\1123-67\_Plan-45B\_BAE.dwg  
 2022/07/14 10:00:00