



City of Prince George  
**History Sheet**

|        |           |
|--------|-----------|
| PID:   | 007942389 |
|        | 007942371 |
|        | 007942362 |
|        | 007942346 |
| SD/MU: |           |
| WO:    |           |

Civic Address: 425 Brunswick St

Legal Description: Lot: 7 - 10 Block: 153 District Lot: 343 Plan: 1268

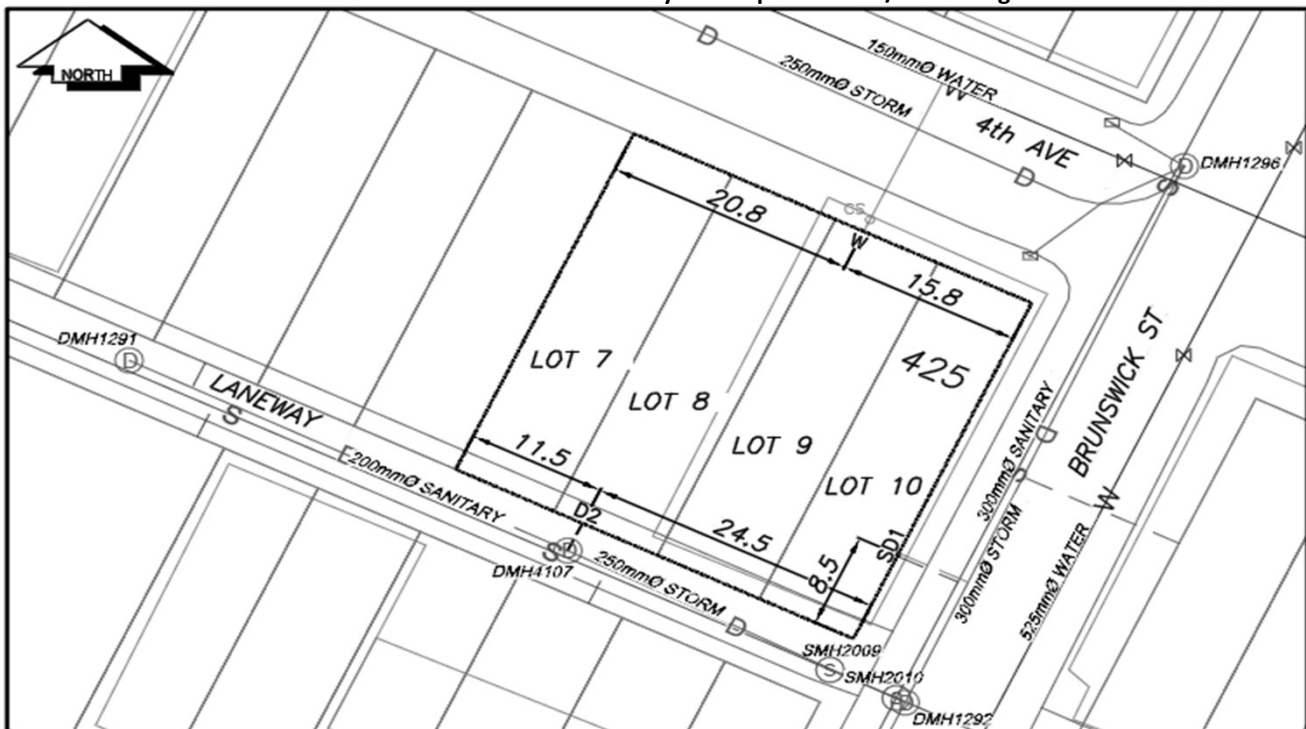
| Service Type | Diameter (mm) | Material | Invert Elev at main (m) | Invert Elev at property line (m) | Invert Elev at service end (m) | Distance into property (m) | Installation Date |
|--------------|---------------|----------|-------------------------|----------------------------------|--------------------------------|----------------------------|-------------------|
| Sanitary     | 100mm         | AC       | -                       | -                                | -                              | -                          | December 1956     |
| Water        | 40mm          | Copper   | -                       | -                                | -                              | -                          | December 1956     |
| Storm (D1)   | 100mm         | AC       | -                       | -                                | -                              | -                          | December 1971     |
| Storm (D2)   | 250mm         | PVC      | -                       | -                                | -                              | -                          | January 2010      |

| Service Connection Location                 |      |                         |      | Sanitary (m) | Storm (m) |
|---|------|-------------------------|------|--------------|-----------|
| Distance from downstream San MH             | 2004 | towards upstream San MH | 2010 | 84.00        |           |
| Distance from downstream Stm MH             | 1292 | towards upstream Stm MH | 1296 |              | 11.39     |
| 250mm storm service connected to Stm MH4107 |      |                         |      | -            |           |

| Power            | Size | Communications   | Size | Cable            | Size | Gas      | Size |
|------------------|------|------------------|------|------------------|------|----------|------|
| BC Hydro         | -    | Telus            | -    | Shaw             | -    | FortisBC | -    |
| Overhead Service |      | Overhead Service |      | Overhead Service |      |          |      |

|               |                              |              |   |
|---------------|------------------------------|--------------|---|
| Installed by: | City of Prince George forces | Survey Date: | - |
| Comments:     |                              |              |   |
|               |                              |              |   |
|               |                              |              |   |

**NOT TO SCALE** The information contained herein is for internal use only.  
Not to be relied on unless confirmed by site inspection and/or investigation.



| LEGEND: |               |      |                  |
|---------|---------------|------|------------------|
| CS      | CURB STOP     | ---W | WATER SERVICE    |
| CO      | CLEAN OUT     | ---S | SANITARY SERVICE |
| ⊗       | WATER VALVE   | ---G | GAS              |
| ⊗       | FIRE HYDRANT  | ---  | ENCUMBRANCE      |
| ⊗       | STORM SERVICE |      |                  |

**NOT TO SCALE**