



CITY OF
PRINCE GEORGE

Civic Address: 1685 3rd Ave

Legal Description: Lot: 1-3 Block: 129 District Lot: 343 Plan: 1268 & PT closed road shown on Plan B7884

Lot Services Sketch

PID:	007767781
	007767803
	007767811
	013022318

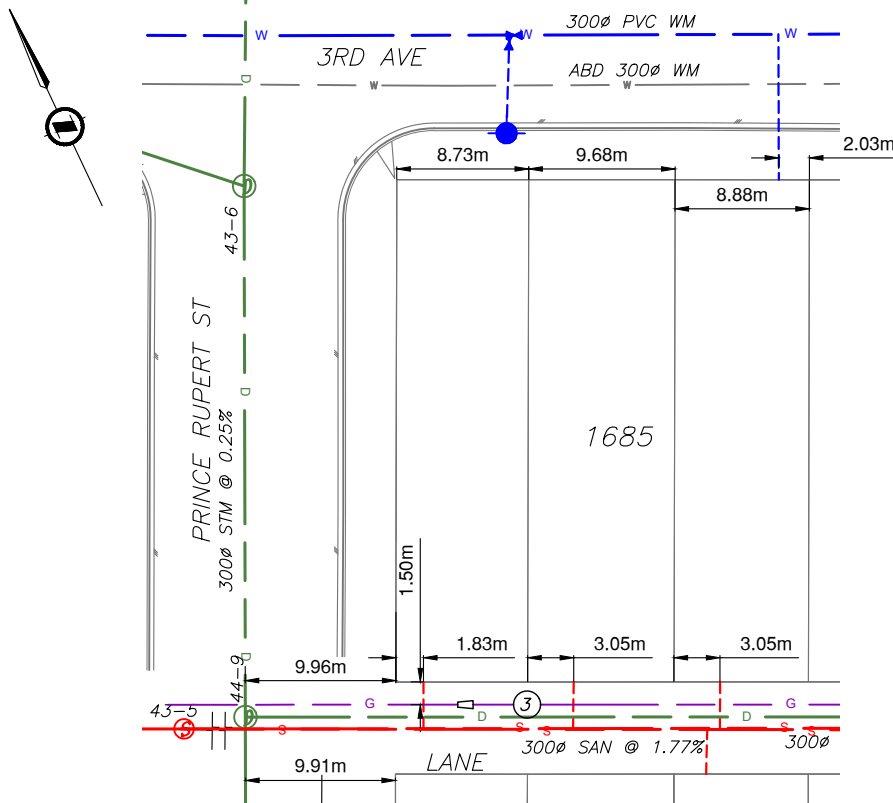
Service Type	Diameter (mm)	Material	Invert Elev @ Main (m)	Invert Elev @ Property Line (m)	Invert Elev @ Service End (m)	Distance into Property (m)	Installation Date
Sanitary (3)	100	AC		-	-	3.10	1959
Water	25	PE	578.83	-	-	10	2022
Storm	-	-	-	-	-	-	-

Sanitary Service Connection Location Notes	Storm Service Connection Location Notes
Distance from downstream SAN MH #2701: 53.50M, 43.17M, 34.00M	Distance from downstream STM MH #: N/A
Distance to upstream SAN MH #2700: 22.31M, 32.56M, 41.97M	Distance to upstream STM MH #: N/A

Miscellaneous Utilities			
Power	Communications	Cable	Gas
BC Hydro	TELUS	Shaw Cable	FortisBC
Overhead Service	Overhead Service	Overhead Service	Underground Service

Installation By:	WATER INSTALLED BY COPG 2022	Draft Date:	-	Survey Date:	-
Comments: WATER SERVICE INSULATED WITH 50 MM ROCKWOOL INSULATION WRAPPED IN NON-PERMEABLE FOILSKIN					
INLAND GAS: IN LANE 3"Ø MAIN					

NOT TO SCALE The information contained herein is for internal use only.
Not to be relied on unless confirmed by site inspection and/or investigation.



	WATER SERVICE AND CURB STOP (CS)		UNDERGROUND GAS LINE
	WATER HYDRANT LEAD, VALVE, HYDRANT		WATER MAIN
	SANITARY SERVICE AND CLEAN OUT (CO)		SANITARY MAIN
	STORM SERVICE		STORM MAIN
	ROAD EDGE		ENCUMBRANCE