



# Lot Services Sketch

|      |           |
|------|-----------|
| PID: | 007149468 |
|------|-----------|

CITY OF  
**PRINCE GEORGE**

Civic Address: 3715 WINSLOW PLACE

Legal Description: Lot: 20 District Lot: 4047 Plan: 26391

| Service Type | Diameter (mm) | Material | Invert Elev @ Main (m) | Invert Elev @ Property Line (m) | Invert Elev @ Service End (m) | Distance into Property (m) | Installation Date |
|--------------|---------------|----------|------------------------|---------------------------------|-------------------------------|----------------------------|-------------------|
| Sanitary     | 100           | PVC      | -                      | -                               | -                             | -                          | January 1 1980    |
| Water        | 19            | COPPER   | -                      | -                               | -                             | -                          | Unknown           |
| Storm        | N/A           | -        | -                      | -                               | -                             | -                          | -                 |

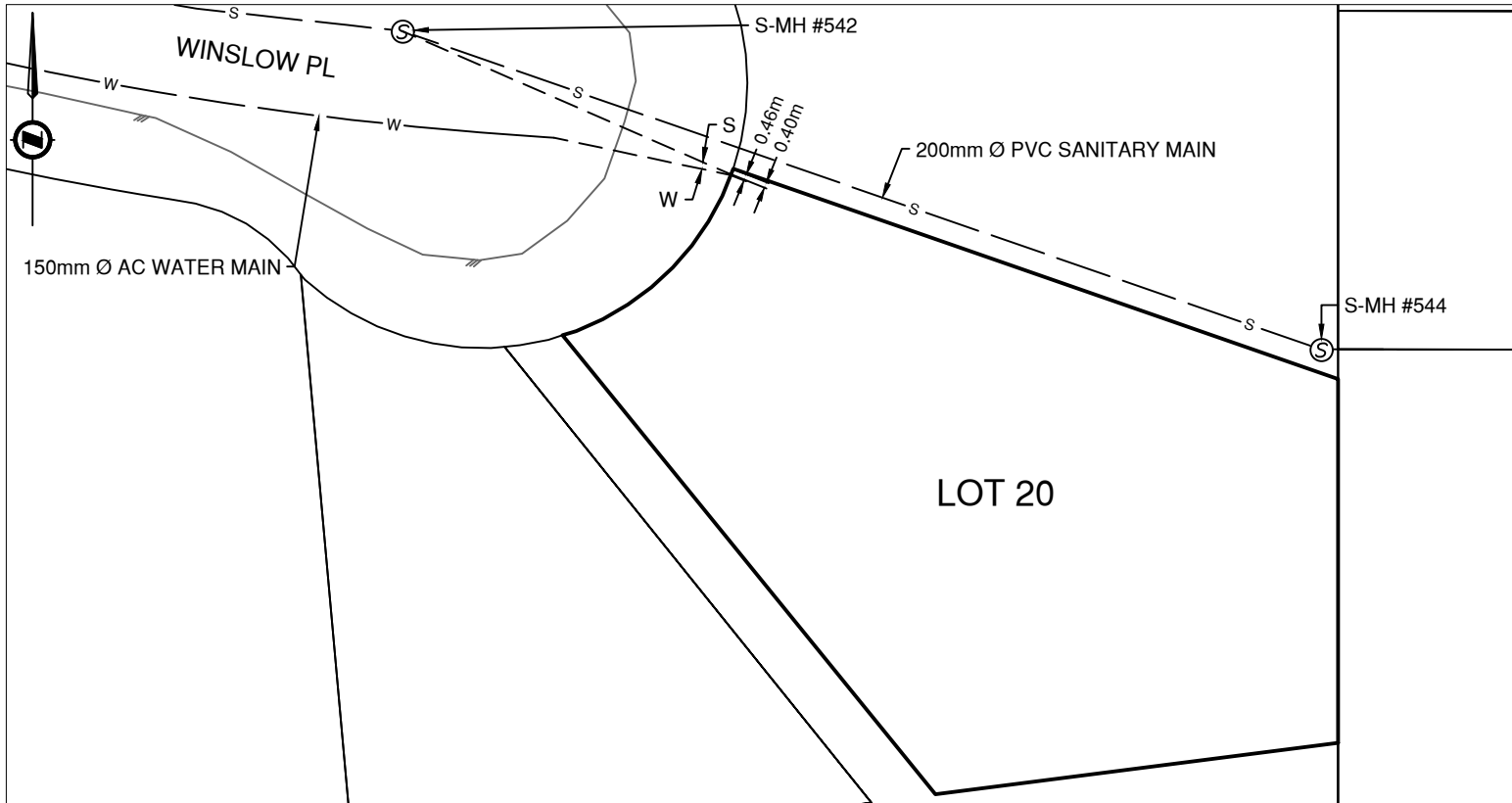
| Sanitary Service Connection Location Notes   | Storm Service Connection Location Notes |
|--|---|
| Distance from downstream SAN MH #542: 0.000m | Distance from downstream STM MH #: N/A  |
| Distance to upstream SAN MH #542: 0.000m     | Distance to upstream STM MH #: N/A      |

| Miscellaneous Utilities |                  |                  |                     |
|-------------------------|------------------|------------------|---------------------|
| Power                   | Communications   | Cable            | Gas                 |
| BC Hydro                | TELUS            | Shaw Cable       | FortisBC            |
| Overhead Service        | Overhead Service | Overhead Service | Underground Service |

|                          |                         |
|--------------------------|-------------------------|
| Installation By: Unknown | Survey Date: 2022-06-13 |
|--------------------------|-------------------------|

**Comments:**  
 Sanitary Service is ~0.4m from the North East corner of Lot 20. Water Service is ~0.5m from the North East corner of Lot 20. Services are side by side.  
 Inspection #4229767 completed 2022-06-13.

**NOT TO SCALE** The information contained herein is for internal use only.  
 Not to be relied on unless confirmed by site inspection and/or investigation.



|  |                                     |  |                      |
|--|-------------------------------------|--|----------------------|
|  | WATER SERVICE AND CURB STOP (CS)    |  | UNDERGROUND GAS LINE |
|  | WATER HYDRANT LEAD, VALVE, HYDRANT  |  | WATER MAIN           |
|  | SANITARY SERVICE AND CLEAN OUT (CO) |  | SANITARY MAIN        |
|  | STORM SERVICE                       |  | STORM MAIN           |
|  | ROAD EDGE                           |  | ENCUMBRANCE          |