



City of Prince George
History Sheet

| | |
|------|-----------|
| PID: | 006536026 |
| MU: | 101433 |
| WO: | 73174 |

Civic Address: 1245 20th Ave

Legal Description: Lot: 1 District Lot: 931 Plan: 20939

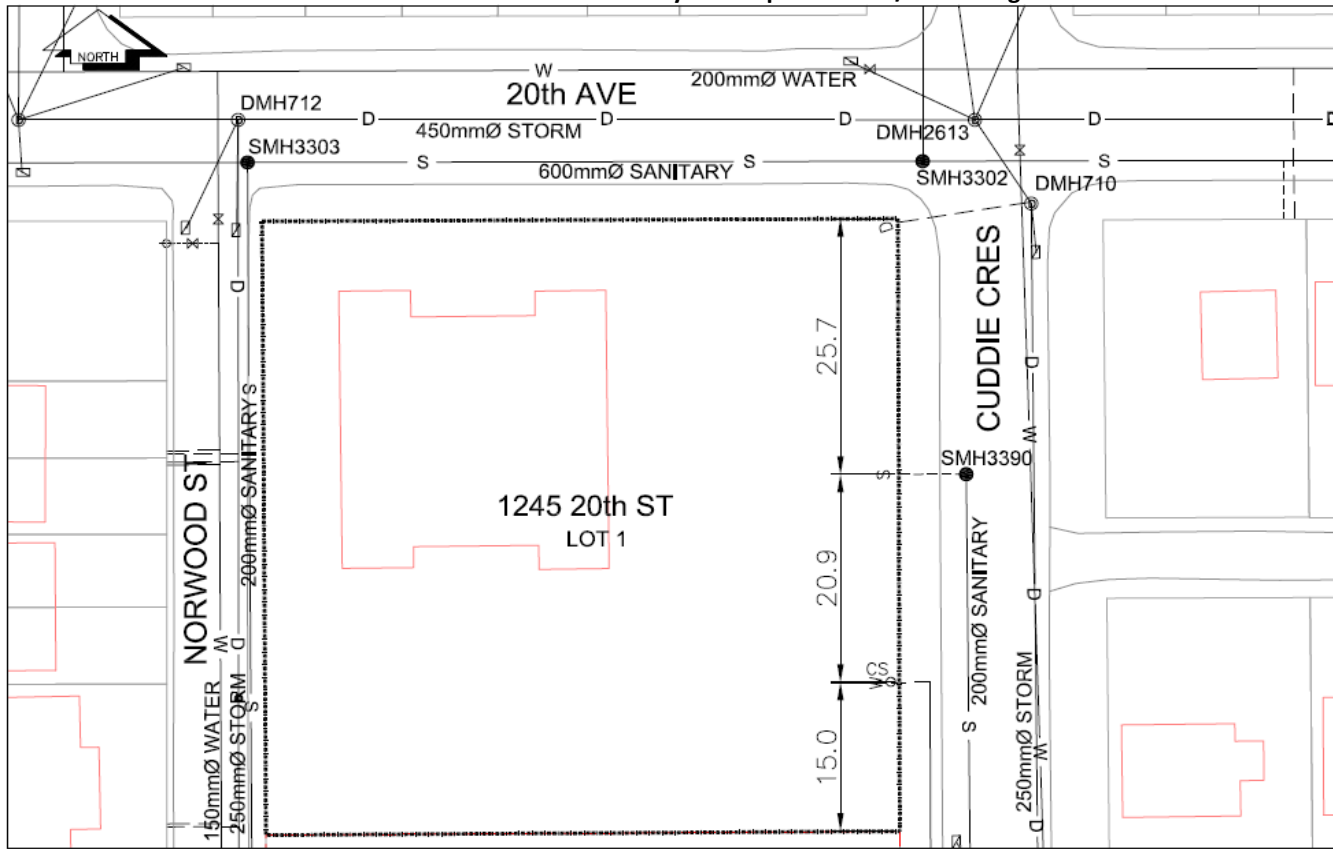
| Service Type | Diameter (mm) | Material | Invert Elev at main (m) | Invert Elev at property line (m) | Invert Elev at service end (m) | Distance into property (m) | Installation Date |
|--------------|---------------|----------|-------------------------|----------------------------------|--------------------------------|----------------------------|-------------------|
| Sanitary | 150mm | PVC | - | - | - | - | January 1982 |
| Water | 150mm | PVC | - | - | - | - | January 1973 |
| Storm | 250mm | PVC | - | - | - | - | October 2013 |

| Service Connection Location | Sanitary (m) | Storm (m) |
|--|--------------|-----------|
| 150mm Sanitary service connected to SMH 3390 | - | |
| 250mm Storm service connected to DMH 710 | | |

| Power | Size | Communications | Size | Cable | Size | Gas | Size |
|------------------|------|------------------|------|------------------|------|----------|------|
| BC Hydro | - | Telus | - | Shaw | - | FortisBC | - |
| Overhead Service | | Overhead Service | | Overhead Service | | | |

| | | | |
|---------------|---|--------------|---|
| Installed by: | City of Prince George forces | Survey Date: | - |
| Comments: | 20mm and 40mm water services decommissioned as per John Handler. Services sizes confirmed in May 2014 | | |

**NOT TO SCALE The information contained herein is for internal use only.
Not to be relied on unless confirmed by site inspection and/or investigation.**



LEGEND:

| | | | | | |
|----------------|-----------|---|------------------|---|---------------|
| C ^S | CURB STOP | W | WATER SERVICE | S | STORM SERVICE |
| C ^O | CLEAN OUT | S | SANITARY SERVICE | X | WATER VALVE |

NOT TO SCALE