



City of Prince George
History Sheet

PID:	006021701
SD/MU:	
WO:	

Civic Address: 1151 Commercial Cres

Legal Description: Lot: PCL 1 District Lot: 936 Plan: 28300

Service Type	Diameter (mm)	Material	Invert Elev at main (m)	Invert Elev at property line (m)	Invert Elev at service end (m)	Distance into property (m)	Installation Date
Sanitary (S1)	150mm	AC	-	-	-	-	December 1964
Sanitary (S2)	150mm	AC	-	-	-	-	December 1964
Sanitary (S3)	100mm	AC	-	-	-	-	December 1964
Sanitary (S4)	150mm	AC	-	-	-	-	December 1964
Sanitary (S5)	150mm	AC	-	-	-	-	December 1964
Sanitary (S6)	150mm	AC	-	-	-	-	December 1962
Sanitary (S7)	150mm	AC	-	-	-	-	December 1962
Sanitary (S8)	150mm	AC	-	-	-	-	December 1962
Water (W1)	100mm	Unknown	-	-	-	-	December 1964
Water (W2)	150mm	Unknown	-	-	-	-	December 1964
Water (W3)	150mm	Unknown	-	-	-	-	December 1964
Water (W4)	100mm	Unknown	-	-	-	-	December 1964
Water (W5)	150mm	Unknown	-	-	-	-	December 1964
Water (W6)	150mm	Unknown	-	-	-	-	December 1964
Water (W7)	150mm	Unknown	-	-	-	-	December 1964
Water (W8)	100mm	Unknown	-	-	-	-	December 1962
Water (W9)	150mm	Unknown	-	-	-	-	December 1962
Storm (D1)	200mm	AC	-	-	-	-	December 1964
Storm (D2)	200mm	AC	-	-	-	-	December 1964
Storm (D3)	150mm	AC	-	-	-	-	December 1964
Storm (D4)	200mm	AC	-	-	-	-	December 1964
Storm (D5)	150mm	AC	-	-	-	-	December 1964
Storm (D6)	150mm	AC	-	-	-	-	December 1964
Storm (D7)	200mm	AC	-	-	-	-	December 1964
Storm (D8)	200mm	AC	-	-	-	-	December 1964
Storm (D9)	150mm	AC	-	-	-	-	December 1964

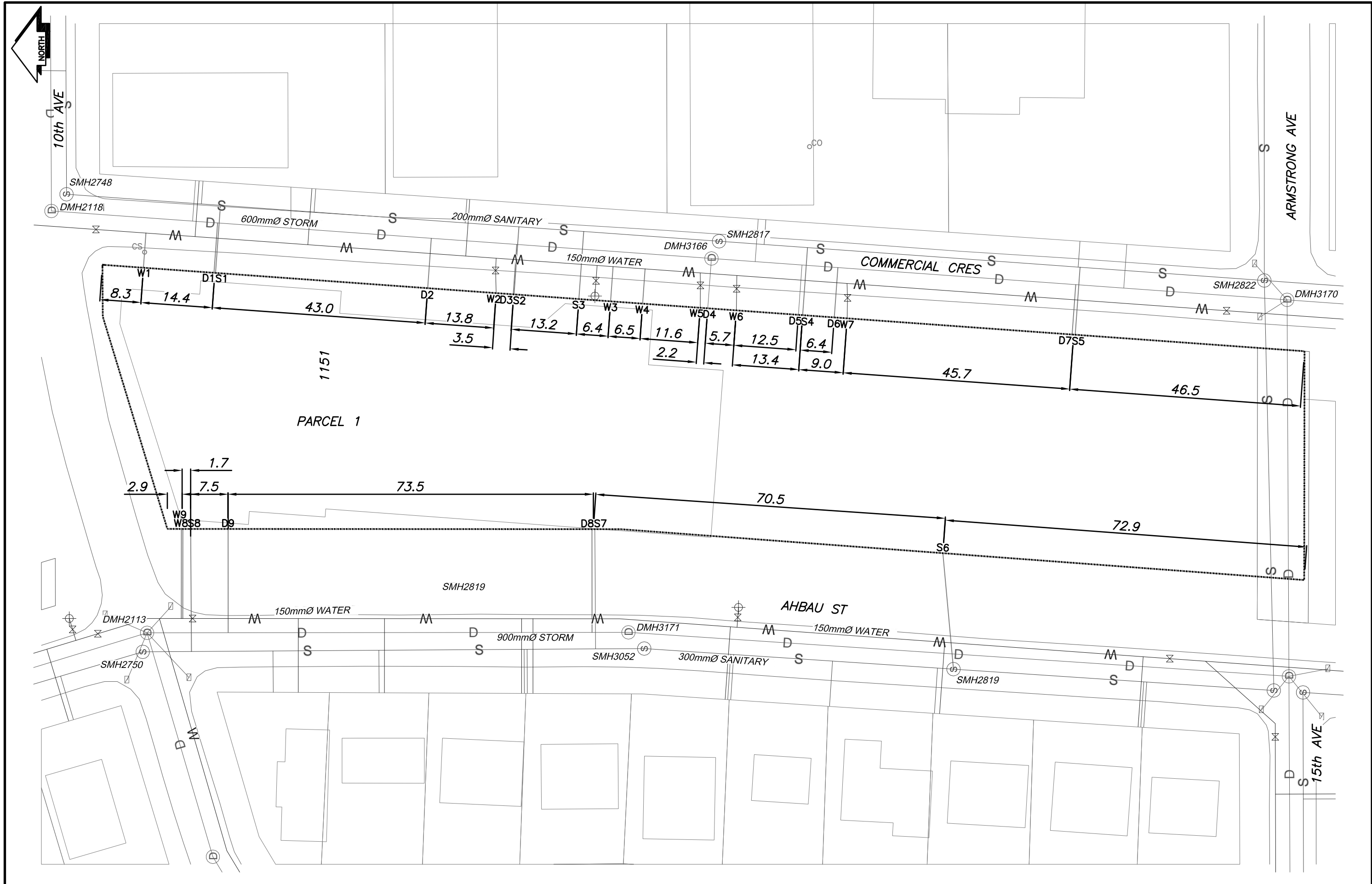
Service Connection Location				Sanitary (m)	Storm (m)
Distance from downstream San MH	2817	towards upstream San MH	2748	101.49	
Distance from downstream San MH	2817	towards upstream San MH	2817	40.09	
Distance from downstream San MH	2817	towards upstream San MH	2817	27.51	
Distance from downstream San MH	2822	towards upstream San MH	2818	91.19	
Distance from downstream San MH	2822	towards upstream San MH	2818	37.61	
150mm Sanitary service connected to San MH2819					
Distance from downstream San MH	3052	towards upstream San MH	2750	9.72	
Distance from downstream San MH	3052	towards upstream San MH	2750	90.74	
Distance from downstream Stm MH	3166	towards upstream Stm MH	2118		98.95
Distance from downstream Stm MH	3166	towards upstream Stm MH	2118		56.04
Distance from downstream Stm MH	3166	towards upstream Stm MH	2118		38.85
200MM Storm service connected to Stm MH3166					
Distance from downstream Stm MH	3170	towards upstream Stm MH	3166		97.66
Distance from downstream Stm MH	3170	towards upstream Stm MH	3166		90.45
Distance from downstream Stm MH	3170	towards upstream Stm MH	3166		42.78
Distance from downstream Stm MH	3171	towards upstream Stm MH	2113		7.17
Distance from downstream Stm MH	3171	towards upstream Stm MH	2113		80.41

Power	Size	Communications	Size	Cable	Size	Gas	Size
BC Hydro	-	Telus	-	Shaw	-	FortisBC	-
Overhead Service		Overhead Service		Overhead Service			

Installed by:		Survey Date:	-
Comments:			

NOT TO SCALE The information contained herein is for internal use only.
Not to be relied on unless confirmed by site inspection and/or investigation.

NOT TO SCALE



LEGEND:

CS	CURB STOP	—W—	WATER SERVICE	—D—	STORM SERVICE
CO	CLEAN OUT	—S—	SANITARY SERVICE	—G—	GAS

Not to scale
 The information contained herein is for internal use only. Not to be relied upon unless confirmed by site inspection and/or investigation.