



City of Prince George

PID:	005437580
	005437601
	005437628
SD/MU:	
WO:	

## History Sheet

Civic Address: 2609 Gunn Road  
 Legal Description: Lot: 48 District Lot: 629 Plan: 902  
 Lot: 47 District Lot: 629 Plan: 902  
 Lot: 46 District Lot: 629 Plan: 902

Service Type	Diameter (mm)	Material	Invert Elev at main (m)	Invert Elev at property line (m)	Invert Depth at service end (m)	Distance into property (m)	Installation Date
Sanitary	100mm	AC	-	689.75	2.74	-	January 1976
Water	Unknown	Unknown	-	-	-	-	April 1998
Storm	N/A	N/A	-	-	-	-	

Service Connection Location				Sanitary (m)	Storm (m)
Distance from downstream San MH	2883	towards upstream San MH	2882	58.87	
Distance from downstream Stm MH	-	towards upstream Stm MH	-		

Power	Size	Communications	Size	Cable	Size	Gas	Size
BC Hydro	-	Telus	-	Shaw	-	FortisBC	-
Overhead Service		Overhead Service		Overhead Service			

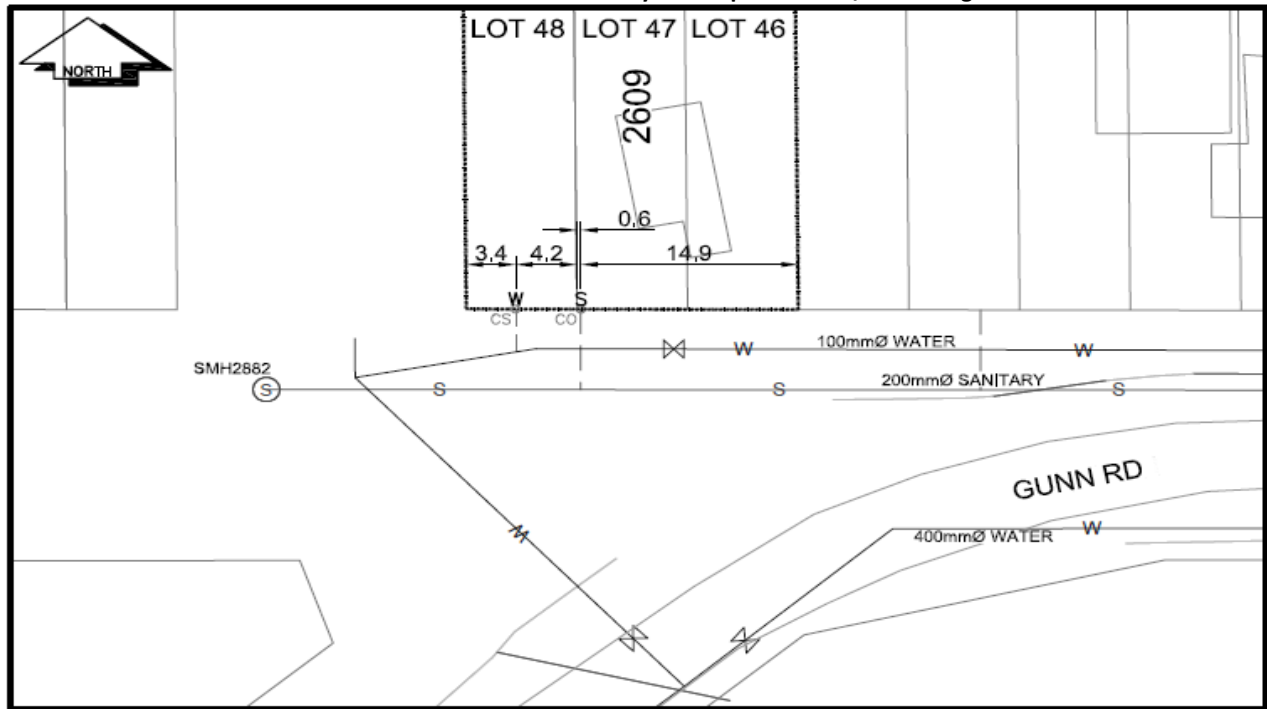
Installed by: \_\_\_\_\_ Survey Date: \_\_\_\_\_

Comments: \_\_\_\_\_

\_\_\_\_\_

\_\_\_\_\_

**NOT TO SCALE** The information contained herein is for internal use only.  
 Not to be relied on unless confirmed by site inspection and/or investigation.



LEGEND:

CS <sup>o</sup> CURB STOP	--- WATER SERVICE	--- STORM SERVICE
CO <sup>o</sup> CLEAN OUT	--- SANITARY SERVICE	--- GAS
WV WATER VALVE	FH FIRE HYDRANT	--- ENCUMBRANCE

**NOT TO SCALE**