



City of Prince George
History Sheet

PID:	005298199
MU:	100048
WO:	00-P0020

Civic Address: 2360, 2366, 2376 Westwood Drive
 Legal Description: Lot: 2 District Lot: 8170 Plan: 30487

Service Type	Diameter (mm)	Material	Invert Elev at main (m)	Invert Elev at property line (m)	Invert Elev at service end (m)	Distance into property (m)	Installation Date
Sanitary (west)	150mm	PVC	-	-	-	-	January 1986
Water (east)	150mm	PVC	-	-	-	-	January 1967
Storm (east)	300mm	AC	-	-	-	-	January 1966
Storm (west)	300mm	AC	-	-	-	-	January 1971

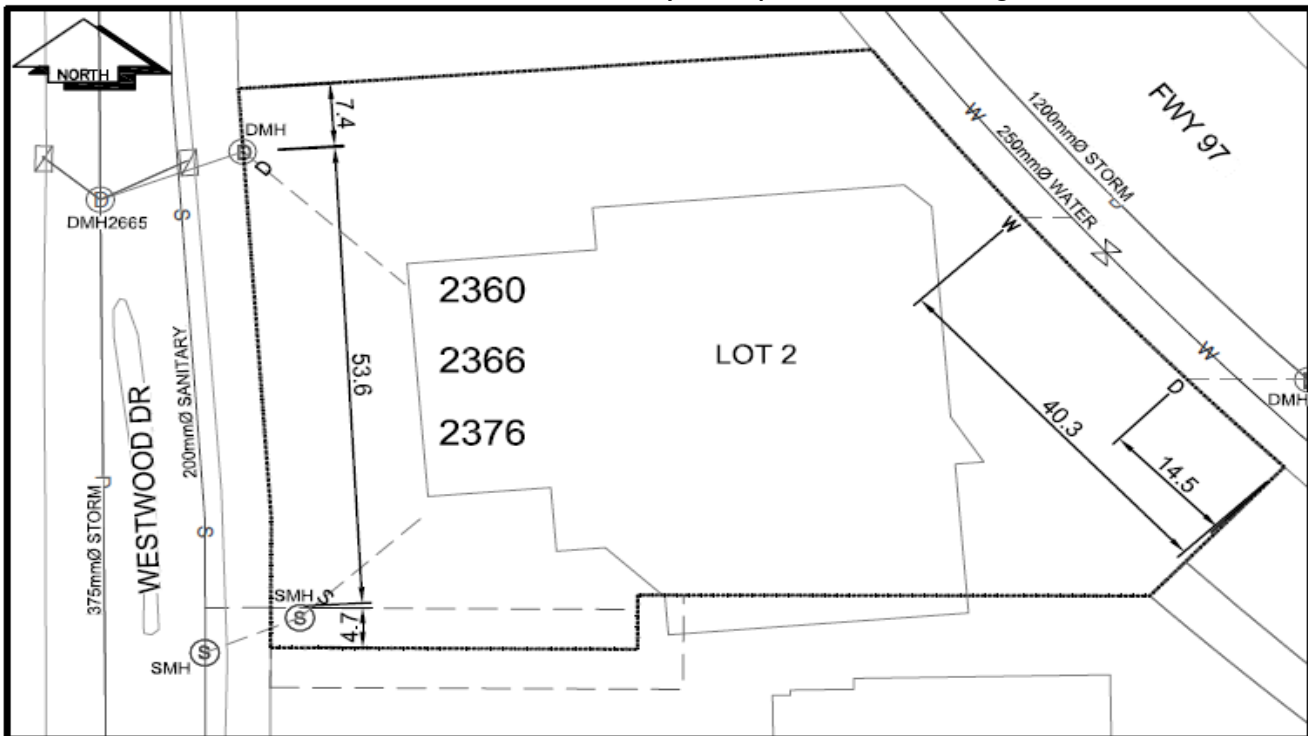
Service Connection Location	Sanitary (m)	Storm (m)
150mm Sanitary service connected to San MH in ROW off Westwood Dr	-	
300mm Storm service connected to Stm MH in Hwy 97 ROW		
300mm Storm service connected to Stm MH on Westwood dr boulevard		

Power	Size	Communications	Size	Cable	Size	Gas	Size
BC Hydro	-	Telus	-	Shaw	-	FortisBC	-
Overhead Service		Overhead Service		Overhead Service			

Installed by: _____ Survey Date: _____

Comments: _____

NOT TO SCALE The information contained herein is for internal use only.
 Not to be relied on unless confirmed by site inspection and/or investigation.



LEGEND:

CS ^o CURB STOP	--- WATER SERVICE	--- STORM SERVICE
CO ^o CLEAN OUT	--- SANITARY SERVICE	--- GAS
⊗ WATER VALVE	⊗ FIRE HYDRANT	--- ENCUMBRANCE

NOT TO SCALE