

Civic Address: 5545 DALHOUSIE DR

Legal Description: Lot: 76 District Lot: 753 Plan: 16085 Encumbrance: 18974

| Service Type | Diameter (mm) | Material | Invert Elev @ Main (m) | Invert Elev @ Property Line (m) | Invert Elev @ Service End (m) | Distance into Property (m) | Installation Date |
|--------------|---------------|----------|------------------------|---------------------------------|-------------------------------|----------------------------|-------------------|
| Sanitary     | 100           | AC       | -                      | -                               | -                             | -                          | JAN 1981          |
| Water        | 20            | COPPER   | -                      | -                               | -                             | -                          | JAN 2021          |
| Storm        | N/A           | -        | -                      | -                               | -                             | -                          | -                 |

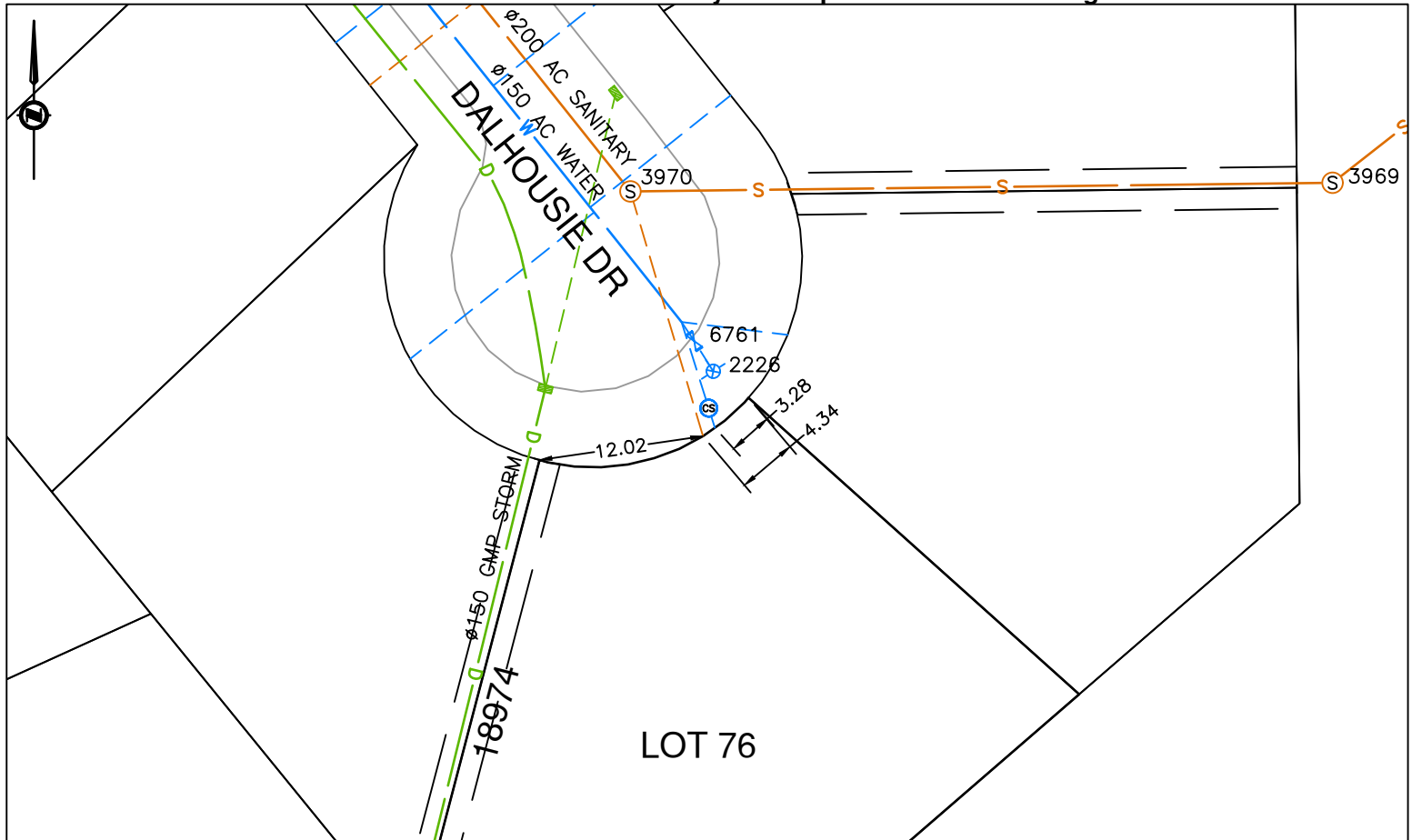
| Sanitary Service Connection Location Notes | Storm Service Connection Location Notes |
|--|---|
| Distance from downstream SMH #3970: 0.00m  | Distance from downstream DMH #:         |
| Distance to upstream SMH #3970: 0.00m      | Distance to upstream DMH #:             |

| Miscellaneous Utilities |                     |                     |                     |
|-------------------------|---------------------|---------------------|---------------------|
| Power                   | Communications      | Cable               | Gas                 |
| BC Hydro                | TELUS               | Shaw Cable          | FortisBC            |
| Underground Service     | Underground Service | Underground Service | Underground Service |

|                  |                       |             |            |              |            |
|------------------|-----------------------|-------------|------------|--------------|------------|
| Installation By: | City of Prince George | Draft Date: | 2024-08-29 | Survey Date: | 2024-07-09 |
|------------------|-----------------------|-------------|------------|--------------|------------|

**Comments:**  
 Curb Stop is ~3.3m South West from the North corner of Lot 76. Sanitary Service is ~4.3m South West from the North corner of Lot 76.

**NOT TO SCALE The information contained herein is for internal use only.  
 Not to be relied on unless confirmed by site inspection and/or investigation.**



|       |               |   |                                   |
|-------|---------------|---|-----------------------------------|
| S     | SANITARY MAIN | ⊙ | SANITARY SERVICE / CLEAN OUT      |
| D     | STORM MAIN    | ⊙ | STORM SERVICE / CLEAN OUT         |
| W     | WATER MAIN    | ⊙ | WATER SERVICE / CURB STOP         |
| - - - | ROAD EDGE     | ⊙ | FIRE HYDRANT LEAD, VALVE, HYDRANT |
| - - - | ENCUMBRANCE   |   |                                   |