

Lot Grading Plan for

Proposed Lot A and B, District Lot 4050, Cariboo District, Unregistered Plan EPP135943

Parcel dimensions derived from Unregistered Plan EPP135943

PID: 009-937-226

Civic Address: 3349 Hillside Drive, Prince George, BC

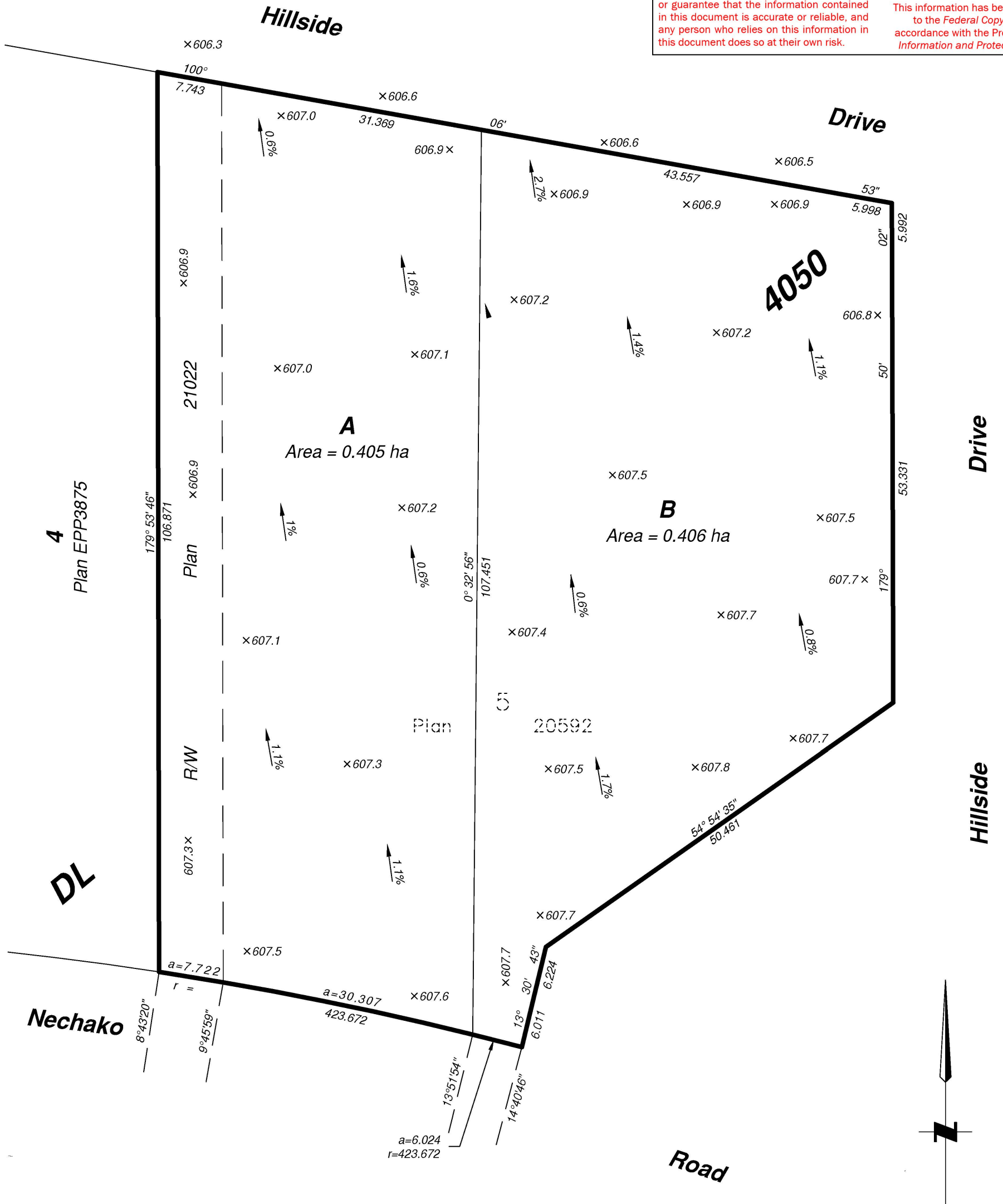


The intended plot size of this plan is 280mm in width by 432mm in height (B size) when plotted at a scale of 1:500.

All distances are in metres and decimals thereof.

The City of Prince George does not represent or guarantee that the information contained in this document is accurate or reliable, and any person who relies on this information in this document does so at their own risk.

City of Prince George
This information has been provided subject to the Federal Copyright Act and in accordance with the Provincial Freedom of Information and Protection of Privacy Act



x 000.0 Spot Elevation
 % → Flow Direction and grade percent

Note:
 Flow directions based off contours and spot elevations from PG Map LiDAR.

All rights reserved. No person may copy, reproduce, transmit or alter this document in whole or in part without the consent of the signatory.

VGPG File: 240909-2400077-GRID-GRADING PLAN-R1

Prepared for:
 Virk Homes
 5867 Leland Road,
 Prince George, BC
 V2N 6J2



674 - 2nd Avenue
 Prince George, BC V2L 3A2
 250-563-9515
 www.vectorgeomatics.ca



Albert Koehler, BCLS No. 974
 Certified correct this 9th day of September, 2024.
 This document is not valid unless digitally signed.