

LEGAL DESCRIPTION  
LOT 4 DL 1433 PLAN 9947  
PID: 012-778-664

EXISTING ZONING  
RS2

DEVELOPMENT AREA  
0.15 ha.

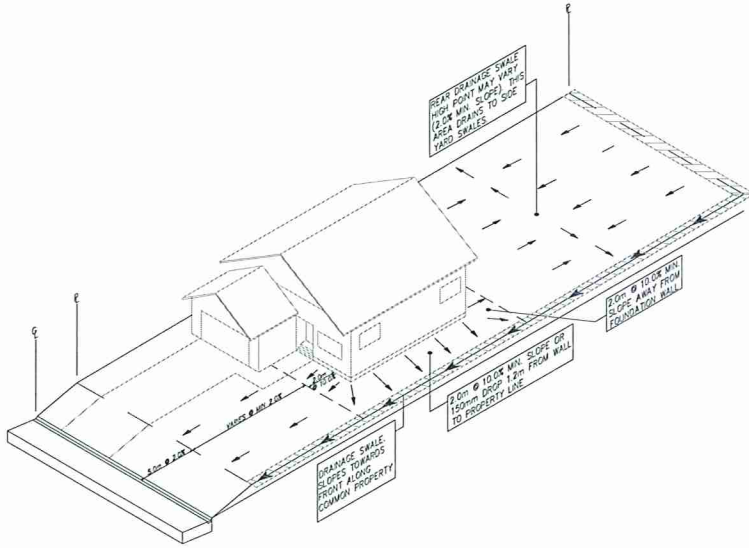
PROPOSED ZONING  
RS2

PROPOSED LOT 1  
0.078 ha.

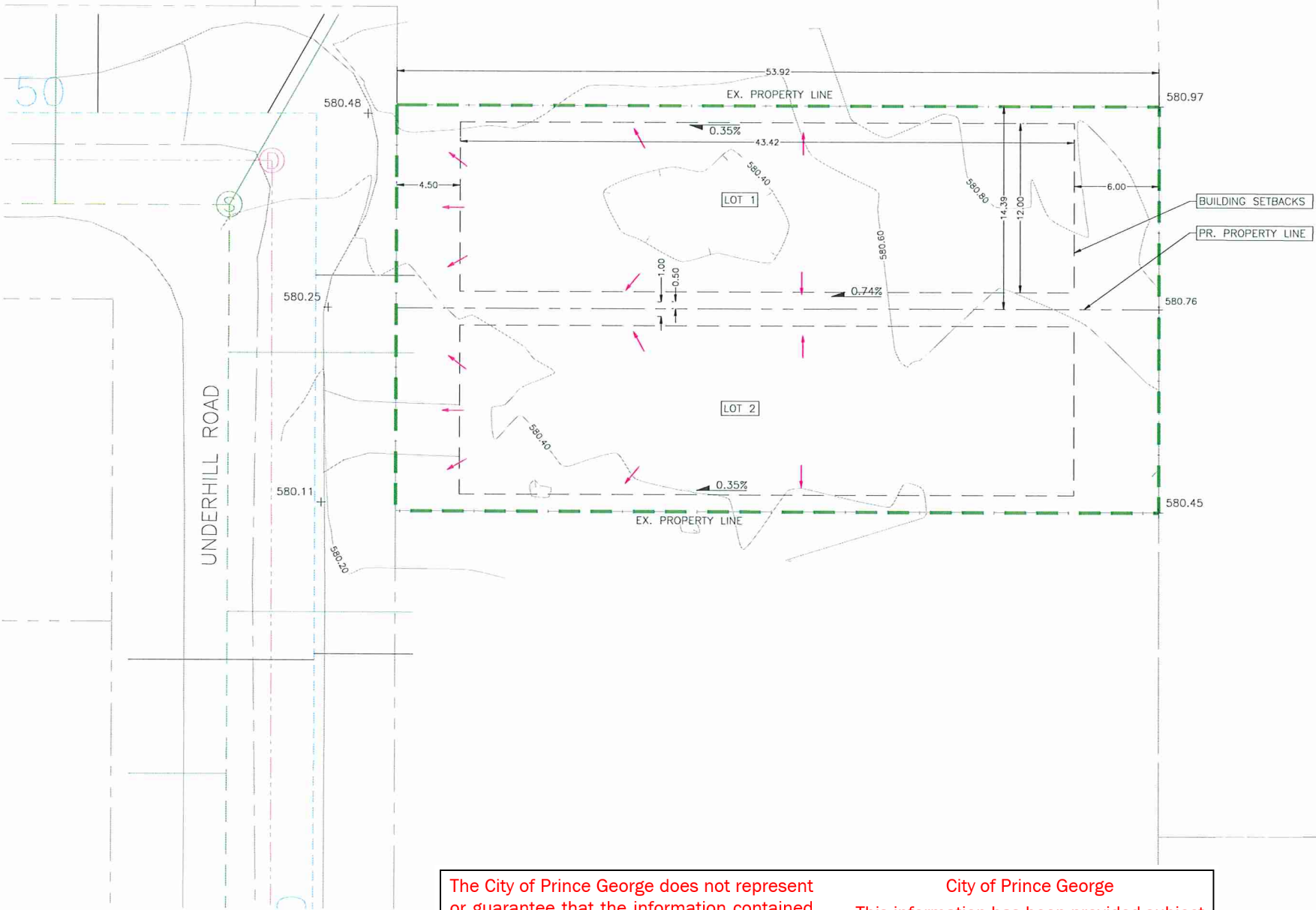
PROPOSED LOT 2  
0.078 ha.

SURVEY NOTES:

1. TOPOGRAPHIC INFORMATION WAS SURVEYED ON MAY 18, 2018 BY L&M ENGINEERING LTD.
2. PROPERTY LINES SHOWN ARE APPROXIMATE.
3. UNDERGROUND SERVICES AND LOCATIONS ARE APPROXIMATE AND MUST BE VERIFIED BEFORE EXCAVATION.



DETAIL 1 - REAR TO FRONT SURFACE DRAINAGE GRADING



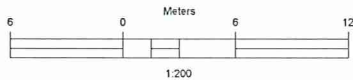
- CONSTRUCTION NOTES:
1. EXISTING GENERAL LOT GRADING IS FROM THE BACK TO THE FRONTAGE OF THE LOT (EAST TO WEST).
  2. FINAL SURFACE GRADING SHOULD BE COMPLETED SO THAT STORM WATER RUN-OFF DRAINS AWAY FROM BUILDING FOOTPRINTS.
  3. ENSURE ALL STORM WATER RUN-OFF DOES NOT FLOW ONTO ADJACENT PROPERTIES, AND IS CONVEYED THROUGH DRAINAGE SWALES AS PROPOSED TO THE ROAD FRONTAGE.

NOTE: FINAL GRADING AND DRAINAGE WORKS ARE TO BE COMPLETED AFTER BUILDING CONSTRUCTION AND ARE TO BE REVIEWED BY A PROFESSIONAL ENGINEER.

ISSUED FOR CONSTRUCTION



1210 FOURTH AVENUE  
PRINCE GEORGE, B.C.  
V2L 3J4  
TEL. (250) 562-1977  
FAX (250) 562-1967



The City of Prince George does not represent or guarantee that the information contained in this document is accurate or reliable, and any person who relies on this information in this document does so at their own risk.

City of Prince George  
This information has been provided subject to the Federal Copyright Act and in accordance with the Provincial Freedom of Information and Protection of Privacy Act

LEGEND

- EXISTING DRAINAGE DIRECTION
- EXISTING GROUND ELEVATION
- PROPOSED GENERAL GRADING

| NO. | DATE     | REVISION                | DR. |
|-----|----------|-------------------------|-----|
| 0   | 01/03/19 | ISSUED FOR CONSTRUCTION | JSS |
| 0   | 18/05/18 | ISSUED FOR INFORMATION  | JSS |



CITY OF  
PRINCE GEORGE  
Development Services

|                 |                         |
|-----------------|-------------------------|
| DRAWN:          | JSS                     |
| CHECKED:        | JRB                     |
| ENGINEER:       | JSS                     |
| SURVEY FILE:    |                         |
| DRAWING FILE:   | C3DBASE-1636-01.dwg     |
| CORRESPONDENCE: | CPG                     |
| GRID:           |                         |
| DATE:           | 10/MAY/2018             |
| SCALES:         | FULL: 1:200 HALF: 1:400 |

3326 UNDERHILL ROAD  
PROPOSED SUBDIVISION  
CONCEPTUAL GRADING PLAN

|                          |         |
|--------------------------|---------|
| CONSULTANT'S PROJECT No. | 1638-01 |
| DRAWING No.              | C001    |

|           |        |
|-----------|--------|
| SHEET No. | 1 OF 1 |
| REV. No.  | 1      |