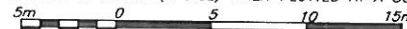


LOT GRADING PLAN LOTS 1 & 2, PLAN EPP32650 D.L. 2424, CARIBOO DISTRICT.

THE INTENDED PLOT SIZE OF THIS PLAN IS 432mm IN WIDTH BY 280mm IN HEIGHT (B SIZE) WHEN PLOTTED AT A SCALE OF 1:250



ALL DISTANCES ARE HORIZONTAL GROUND-LEVEL AND ARE SHOWN IN METRES AND DECIMALS THEREOF, UNLESS OTHERWISE INDICATED.

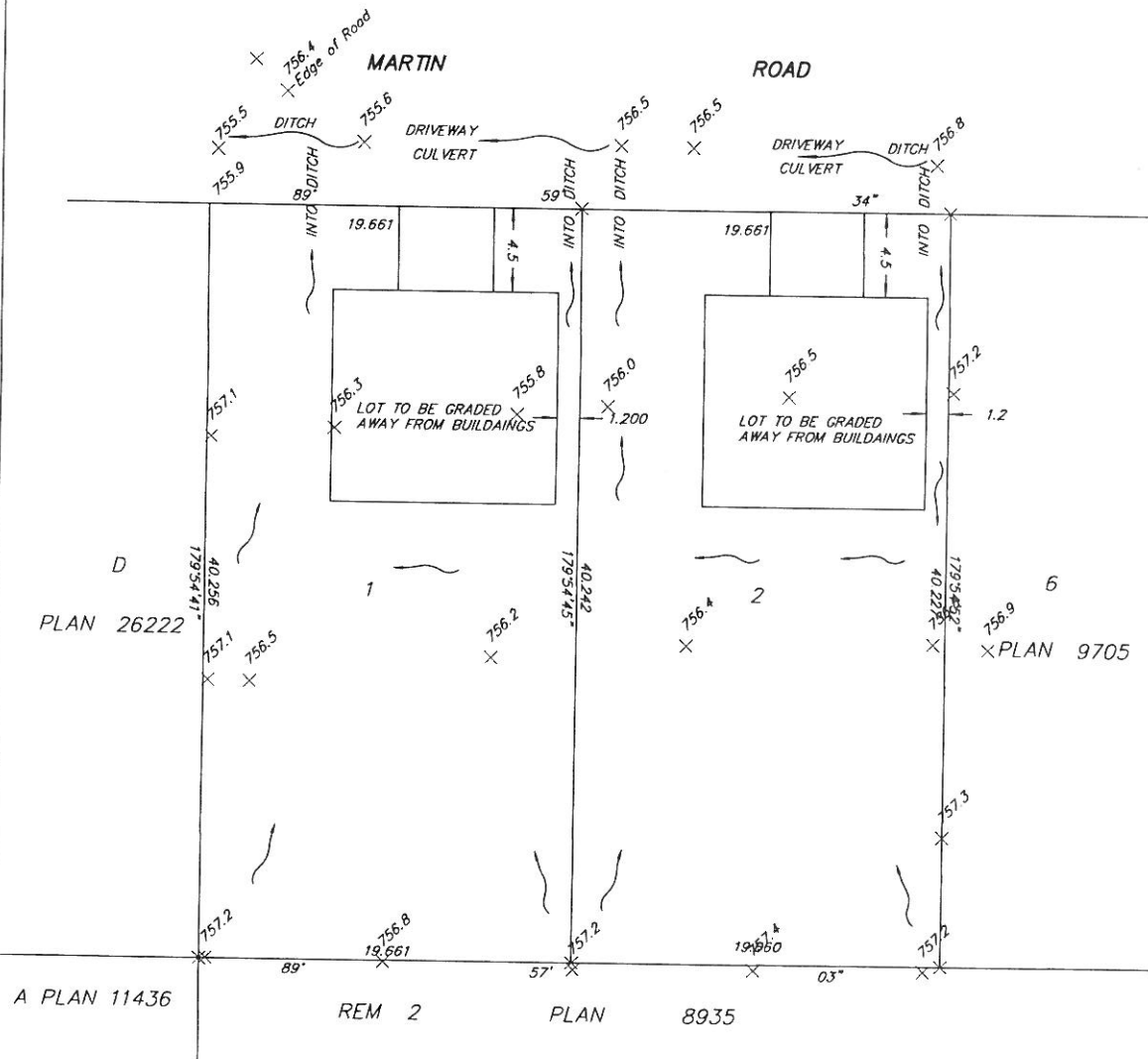
City of Prince George

This information has been provided subject to the Federal Copyright Act and in accordance with the Provincial Freedom of Information and Protection of Privacy Act.

The City of Prince George does not represent or guarantee that the information contained in this document is accurate or reliable, and any person who relies on this information in this document does so at their own risk.

NOTES

- EXISTING DRIVEWAY TO BE REPLACED AND DITCH SLOPED AND GRADED
- LOTS GRADED AND FILL ADDED TO REAR OF DWELLINGS TO ENSURE DRAINAGE AS SHOWN.



McElhanney
McElhanney Associates
Land Surveying Ltd.
Prince George, B.C.

E-mail: pgmals@mcclhanney.com

Ph: (250) 561-2229 Fax: (250) 563-1941

DL- 2424

File No. - 6133-S

CPG File No. SD100380