

FLOW RATE	
25%	535 GPM
50%	1070 GPM
75%	1070 GPM
100%	2135 GPM

4190 15th Avenue
Growers Direct

SPECIAL HAZARDS



Building Protection

Sprinkler Coverage: **None**

Standpipe: **None**

Rollup Doors: **No**

Building Floor Size (Sq. Ft.): **6400**

Stories: **1** Basement: **No**

LEGEND:



 Fire Hydrant

 Electrical Transformer Room

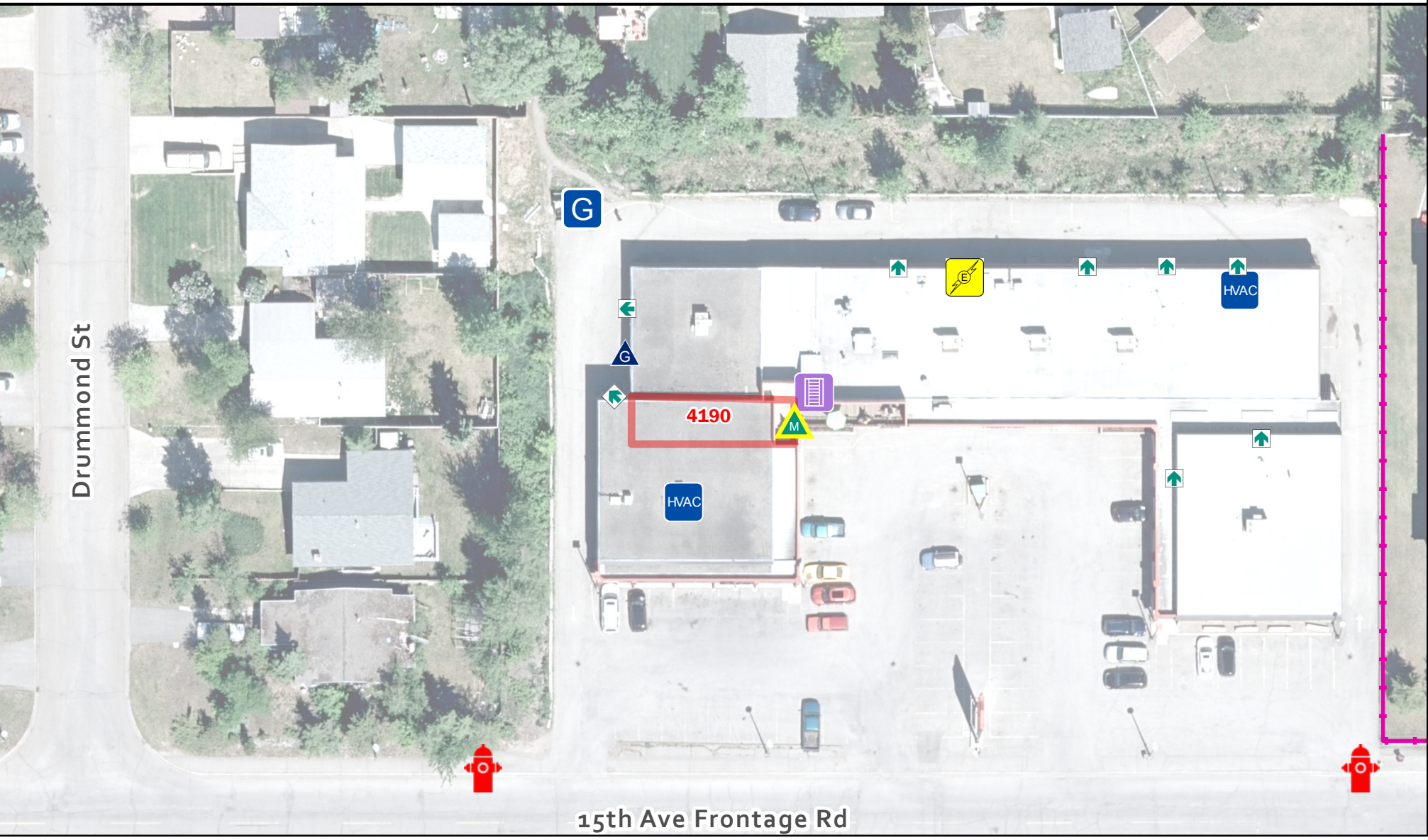
 Staircase

 Gas Main Shutoff

 Dumpster

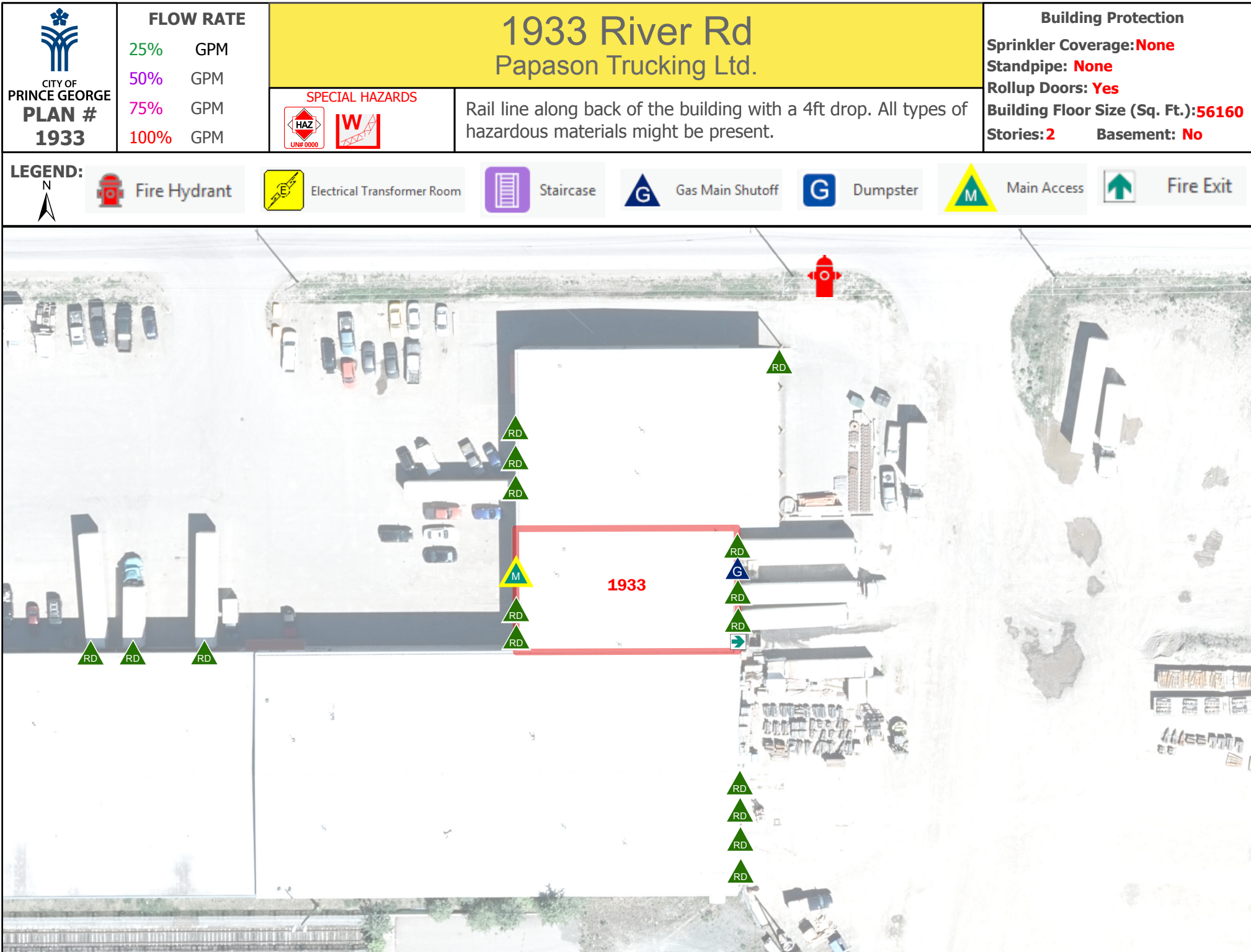
 Main Access

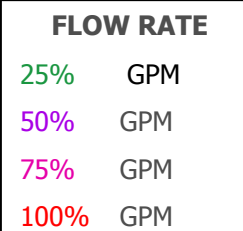
 Fire Exit







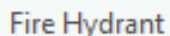




1955 River Rd
Interior Warehousing



Building Protection
Sprinkler Coverage: None
Standpipe: None
Rollup Doors: Yes
Building Floor Size (Sq. Ft.): 56160
Stories: 2 **Basement:** No



Electrical Transformer Room



Staircase



Gas Main Shutoff



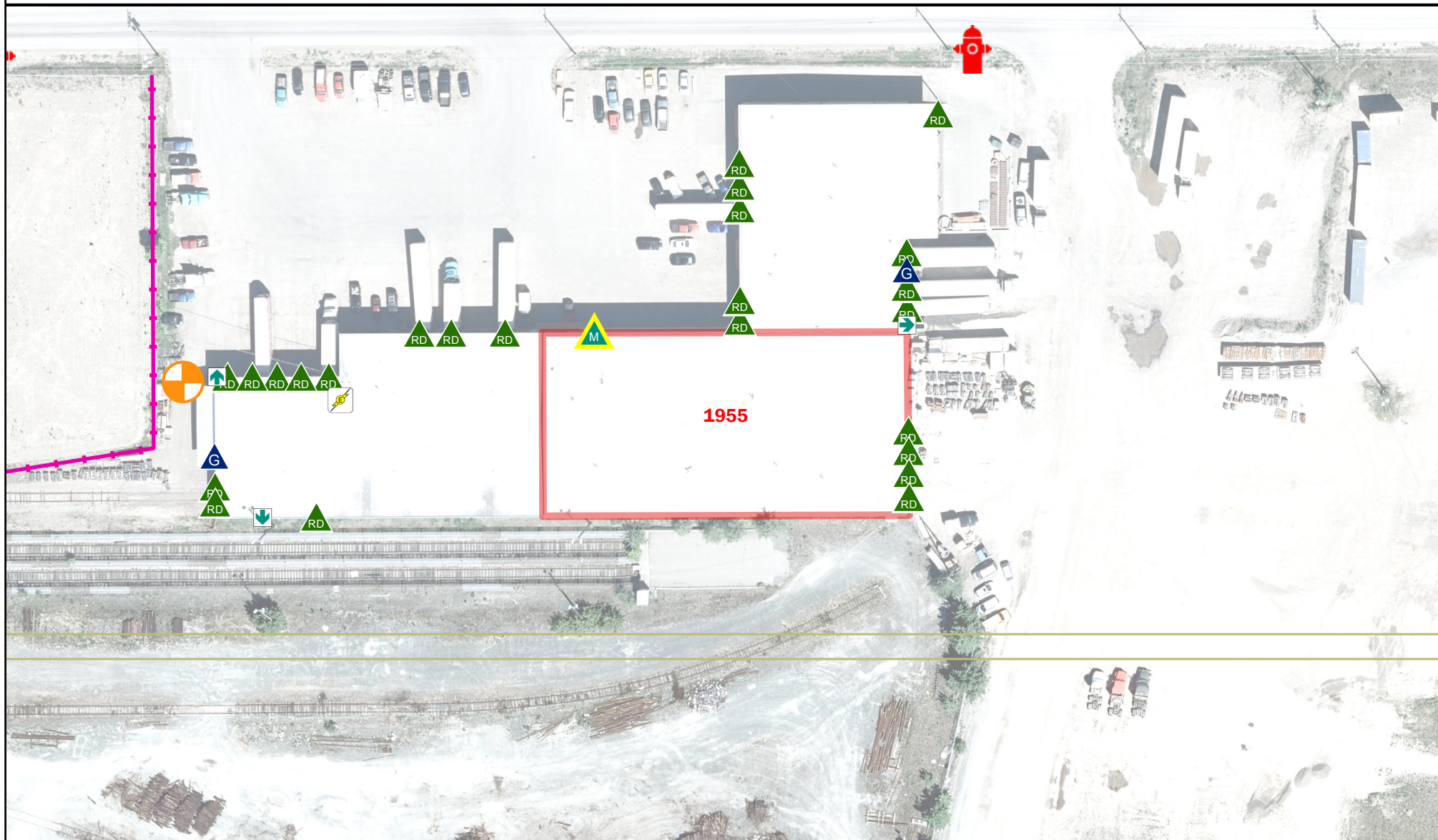
Dumpster

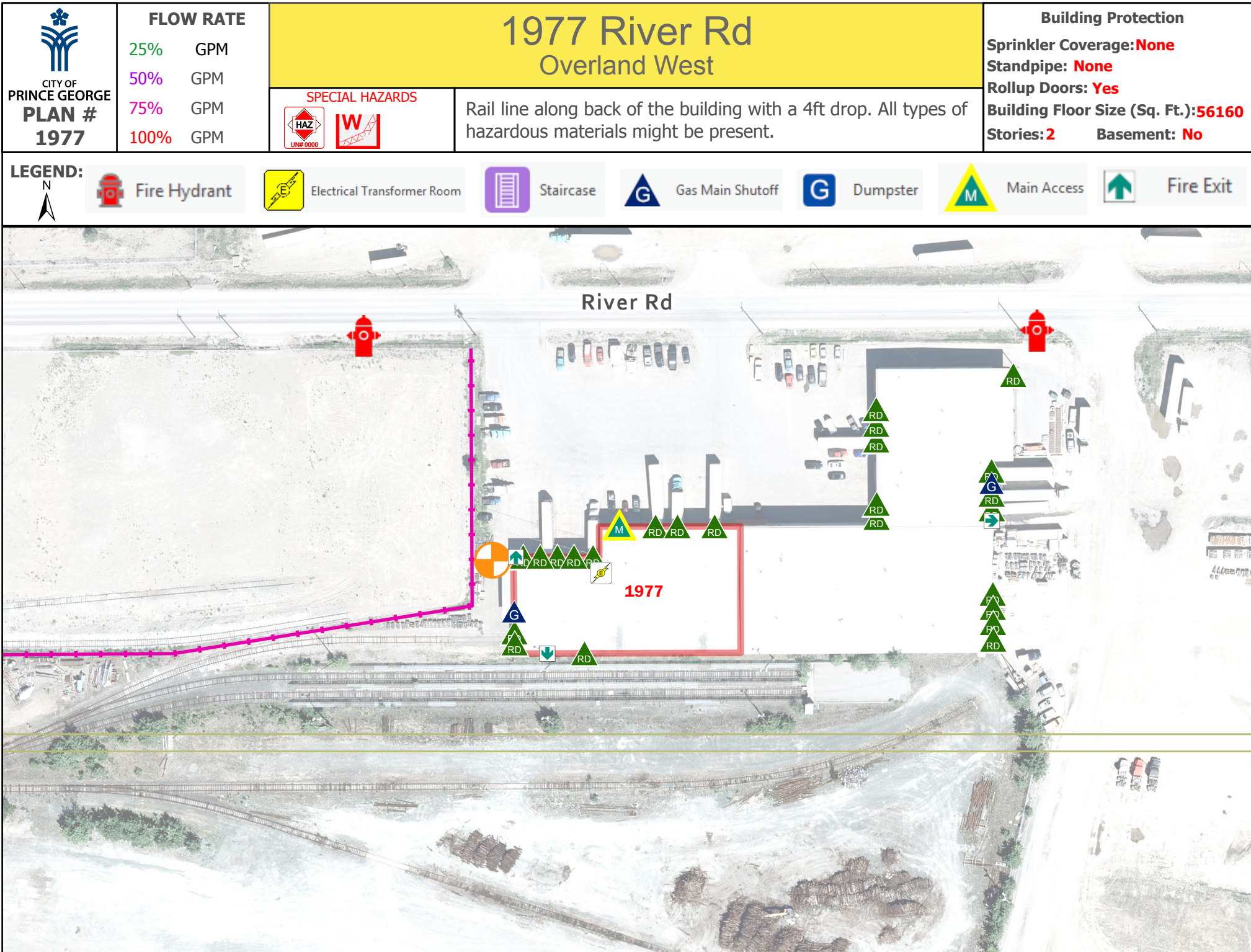


Main Access

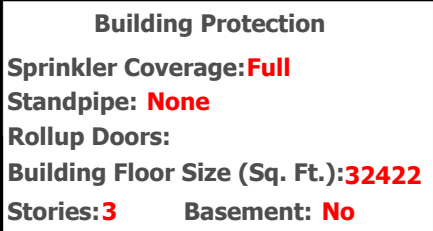


Fire Exit










[illegible]

 CITY OF PRINCE GEORGE PLAN # 4989	FLOW RATE 25% GPM 50% GPM 75% GPM 100% GPM	4989 Hartway Rd Can West Propane		Building Protection Sprinkler Coverage: None Standpipe: None Rollup Doors: Building Floor Size (Sq. Ft.): 160 Stories: 1 Basement: No
	SPECIAL HAZARDS  		2 mobile trucks potentially on site, revalving station mostly empty containers	

LEGEND:


 Fire Hydrant	 Electrical Transformer Room	 Staircase	 Gas Main Shutoff	 Dumpster	 Main Access	 Fire Exit
--	---	---	--	--	---	---



 CITY OF PRINCE GEORGE PLAN # 9080	FLOW RATE 25% GPM 50% GPM 75% GPM 100% GPM	9080 Penn Rd. Kal Tire Retread		Building Protection Sprinkler Coverage: Full Standpipe: None Rollup Doors: Yes Building Floor Size (Sq. Ft.): 60000 Stories: 2 Basement: No
		SPECIAL HAZARDS  	Heavy tire load inside, many types hazardous machinery operating here.	

LEGEND:


 Fire Hydrant

 Electrical Transformer Room

 Staircase

 Gas Main Shutoff

 Dumpster

 Main Access

 Fire Exit

