

LEGEND

EXISTING

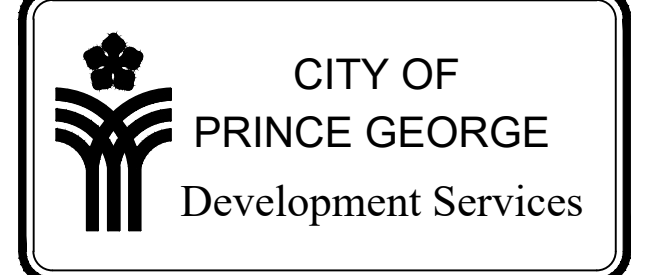
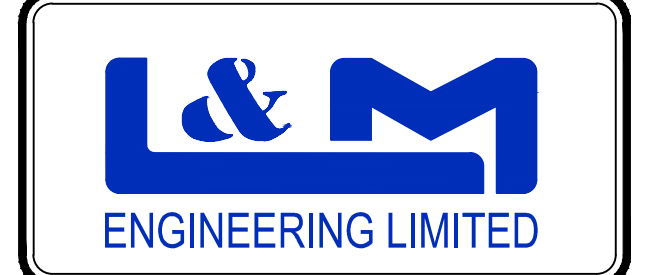
- EX TEST PIT & DRILL HOLE
- EX BENCHMARK & SURVEY HUBS
- EX I.P.s & ISM's
- EX LEGAL LINE
- EX LEGAL R.O.W. & EASEMENT
- EX SANITARY & MANHOLE
- EX SANITARY FORCE MAIN
- EX STORM & MANHOLE
- EX SINGLE & DOUBLE CATCHBASIN c/w CB LEADS
- EX CATCHBASIN MANHOLE
- EX CULVERT
- EX FIRE HYDRANT & VALVE ASSEMBLY
- EX WATERMAIN & VALVE
- EX BLOW-OFF ASSEMBLY
- EX CURB STOP
- EX ROAD & SIDEWALK
- EX ROAD SIGN(s)
- EX SHOULDER
- EX TOP OF SLOPE
- EX TOE OF SLOPE
- EX DITCH or SWALE
- EX FENCE
- EX OVERHEAD LINES
- EX UNDERGROUND LINES
- EX POWER POLE & ANCHOR
- EX GAS MAIN

PROPOSED

- PR LEGAL LINE
- PR LEGAL R.O.W. & EASEMENT
- PR SANITARY & MANHOLE
- PR STORM & MANHOLE
- PR SINGLE & DOUBLE CATCHBASIN c/w CB LEADS
- PR CATCHBASIN MANHOLE
- PR CULVERT
- PR DITCH or SWALE
- PR FIRE HYDRANT & VALVE ASSEMBLY
- PR WATERMAIN & VALVE
- PR GRAVEL SHOULDER
- PR ASPHALT
- PR CURB & SIDEWALK
- PR ROAD SIGN(s)

1	13/12/23	ISSUED FOR CONSTRUCTION	KP
NO.	DATE (D/M/Y)	REVISION	BY

NOT FOR CONSTRUCTION

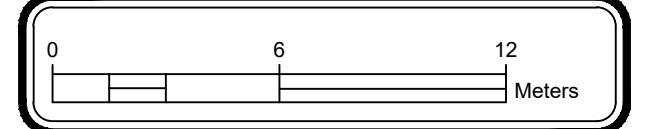


CONSULTANTS PROJECT No.: 1509-33

DRAWN: KP	
CHECKED: TAF	
ENGINEER: TAF	
DATE: MAR 2023	
SCALES: 1:200	
SCALES: HALF 1:400	

KIDD REAL ESTATE HOLDINGS
1215 BLACKBURN ROAD
6 LOT SUBDIVISION
GRADING PLAN

DRAWING No.
C001



The City of Prince George does not represent or guarantee that the information contained in this document is accurate or reliable, and any person who relies on this information in this document does so at their own risk.

City of Prince George
This information has been provided subject to the Federal Copyright Act and in accordance with the Provincial Freedom of Information and Protection of Privacy Act.

C:\Jobs_Files\1509\1509 - Kidd Real Estate Holdings LTD\33 - 1215 Blackburn Road\Design\CD - 1509-33 BASE.dwg