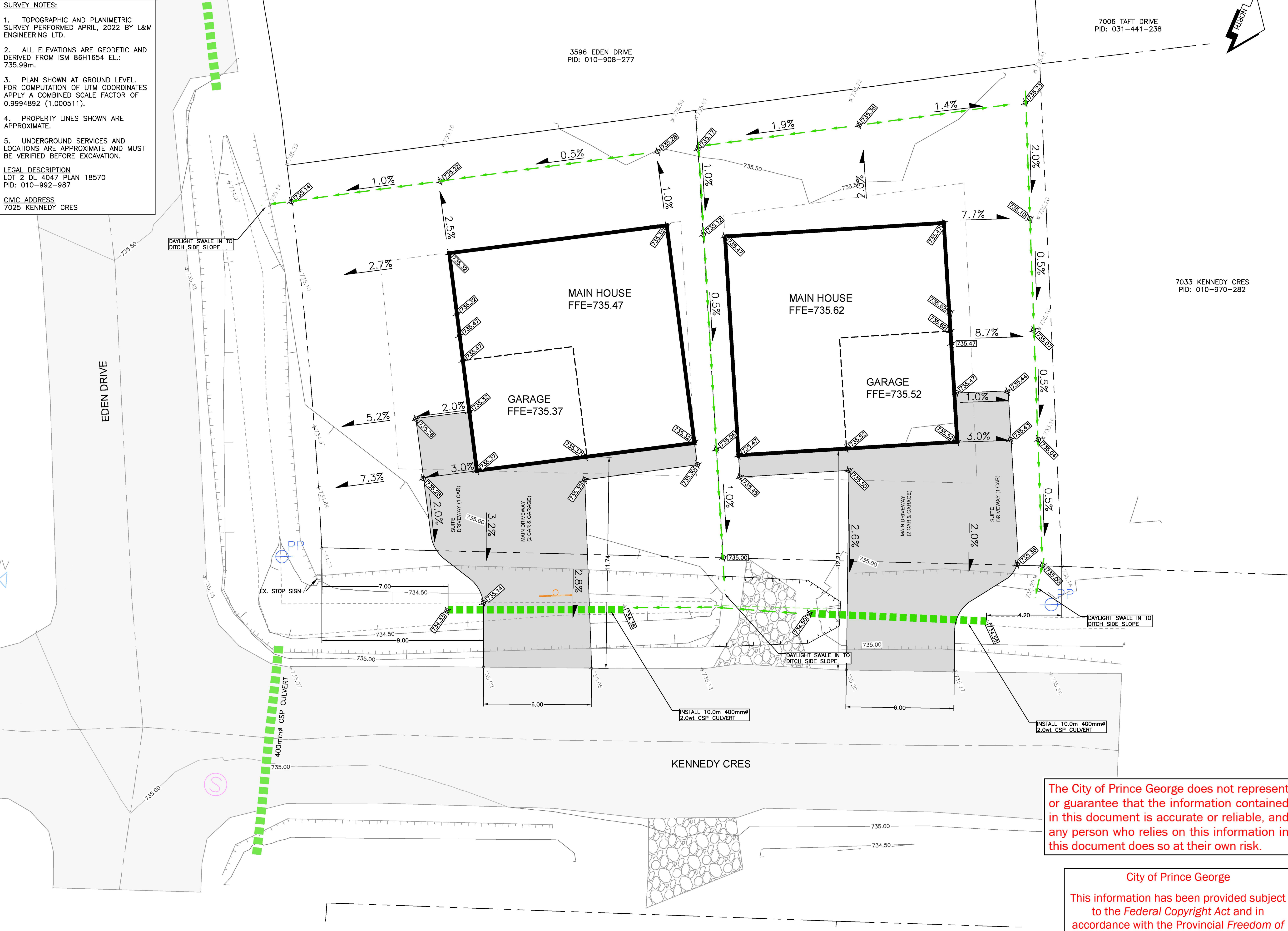


SURVEY NOTES:

1. TOPOGRAPHIC AND PLANIMETRIC SURVEY PERFORMED APRIL, 2022 BY L&M ENGINEERING LTD.
 2. ALL ELEVATIONS ARE GEODETIC AND DERIVED FROM ISM 86H1654 EL.: 735.99m.
 3. PLAN SHOWN AT GROUND LEVEL FOR COMPUTATION OF UTM COORDINATES APPLY A COMBINED SCALE FACTOR OF 0.9994892 (1.000511).
 4. PROPERTY LINES SHOWN ARE APPROXIMATE.
 5. UNDERGROUND SERVICES AND LOCATIONS ARE APPROXIMATE AND MUST BE VERIFIED BEFORE EXCAVATION.
- LEGAL DESCRIPTION
LOT 2 DL 4047 PLAN 18570
PID: 010-992-987
- CIVIC ADDRESS
7025 KENNEDY CRES

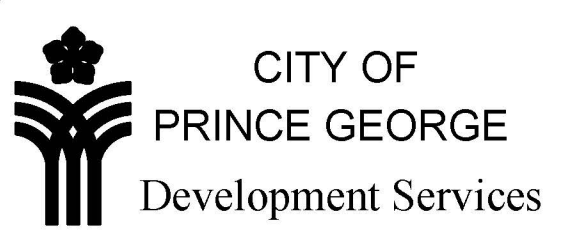
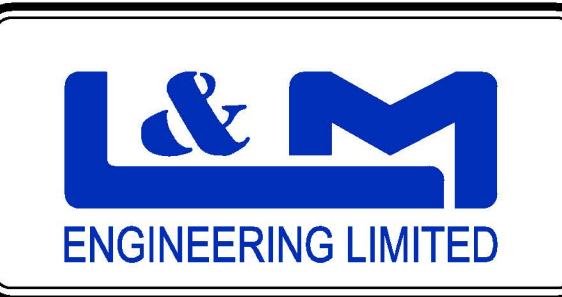


LEGEND

- EXISTING**
- EX. TEST PIT & DRILL HOLE
 - EX. BENCHMARK & SURVEY HUBS
 - EX. IP's & ISM's
 - EX. LEGAL LINE
 - EX. LEGAL R.O.W. & EASEMENT
 - EX. SANITARY & MANHOLE
 - EX. SANITARY FORCE MAIN
 - EX. SINGLE & DOUBLE CATCHBASIN c/w CB LEADS
 - EX. CATCHBASIN MANHOLE
 - EX. CULVERT
 - EX. FIRE HYDRANT & VALVE ASSEMBLY
 - EX. WATERMAIN & VALVE
 - EX. BLOW-OFF ASSEMBLY
 - EX. CURB STOP
 - EX. ROAD & SIDEWALK
 - EX. ROAD SIGN(s)
 - EX. SHOULDER
 - EX. TOP OF SLOPE
 - EX. TOE OF SLOPE
 - EX. DITCH or SWALE
 - EX. FENCE
 - EX. OVERHEAD LINES
 - EX. UNDERGROUND LINES
 - EX. POWER POLE & ANCHOR
 - EX. GAS MAIN
- PROPOSED**
- PR. LEGAL LINE
 - PR. LEGAL R.O.W. & EASEMENT
 - PR. SANITARY & MANHOLE
 - PR. STORM & MANHOLE
 - PR. SINGLE & DOUBLE CATCHBASIN c/w CB LEADS
 - PR. CATCHBASIN MANHOLE
 - PR. CULVERT
 - PR. DITCH or SWALE
 - PR. FIRE HYDRANT & VALVE ASSEMBLY
 - PR. WATERMAIN & VALVE
 - PR. GRAVEL SHOULDER
 - PR. ASPHALT
 - PR. CURB & SIDEWALK
 - PR. ROAD SIGN(s)

NO.	DATE	REV	REVISION	BY
1	26/4/22	REV	DRIVEWAY PER CITY	KP

NOT FOR CONSTRUCTION



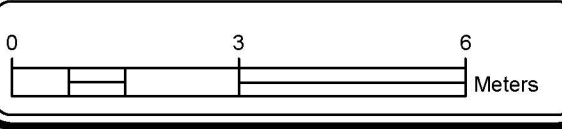
CONSULTANT'S PROJECT No.:	1509-32
DRAWN:	BBB
CHECKED:	TAF
ENGINEER:	TAF
DATE:	APRIL 2022
SCALE:	FULL: 1:100
SCALE:	HALF: 1:200



KIDD REAL ESTATE HOLDINGS
7025 KENNEDY CRES

LOT GRADING PLAN

DRAWING No.
C001



The City of Prince George does not represent or guarantee that the information contained in this document is accurate or reliable, and any person who relies on this information in this document does so at their own risk.

City of Prince George
This information has been provided subject to the Federal Copyright Act and in accordance with the Provincial Freedom of Information and Protection of Privacy Act.