

10 13/10/23 REV NE GRADING
 9 ~~25/11/23~~ **REVISED DRAWING**
 8 13/01/23 ISSUED FOR CONSTRUCTION
 7 11/01/23 IFC REVIEW
 6 24/11/22 REV WITH OFFSITE WORKS
 5 9/11/22 BUILDING PERMIT
 4 19/10/22 REV PER CITY COMMENTS
 3 26/8/22 FOUNDATION PERMIT
 2 4/8/22 REV PARKING LOT
 1 10/6/22 DEVELOPMENT PERMIT

No. DATE REVISION

PROJECT TITLE
**R.G. McLEOD
 DEVELOPMENT
 LTD. OFFICE**

700 KINSMEN PLACE
 PRINCE GEORGE, BC

© Copyright reserved, this plan and design is and at all times remains the exclusive property of Chernoff Thompson Architects North and cannot be used without the architect's consent.

All dimensions on the project must be checked by the contractor.

This drawing must not be used for construction purposes until here countersigned.

date: _____



SHEET TITLE
**GRADING
 PLAN**

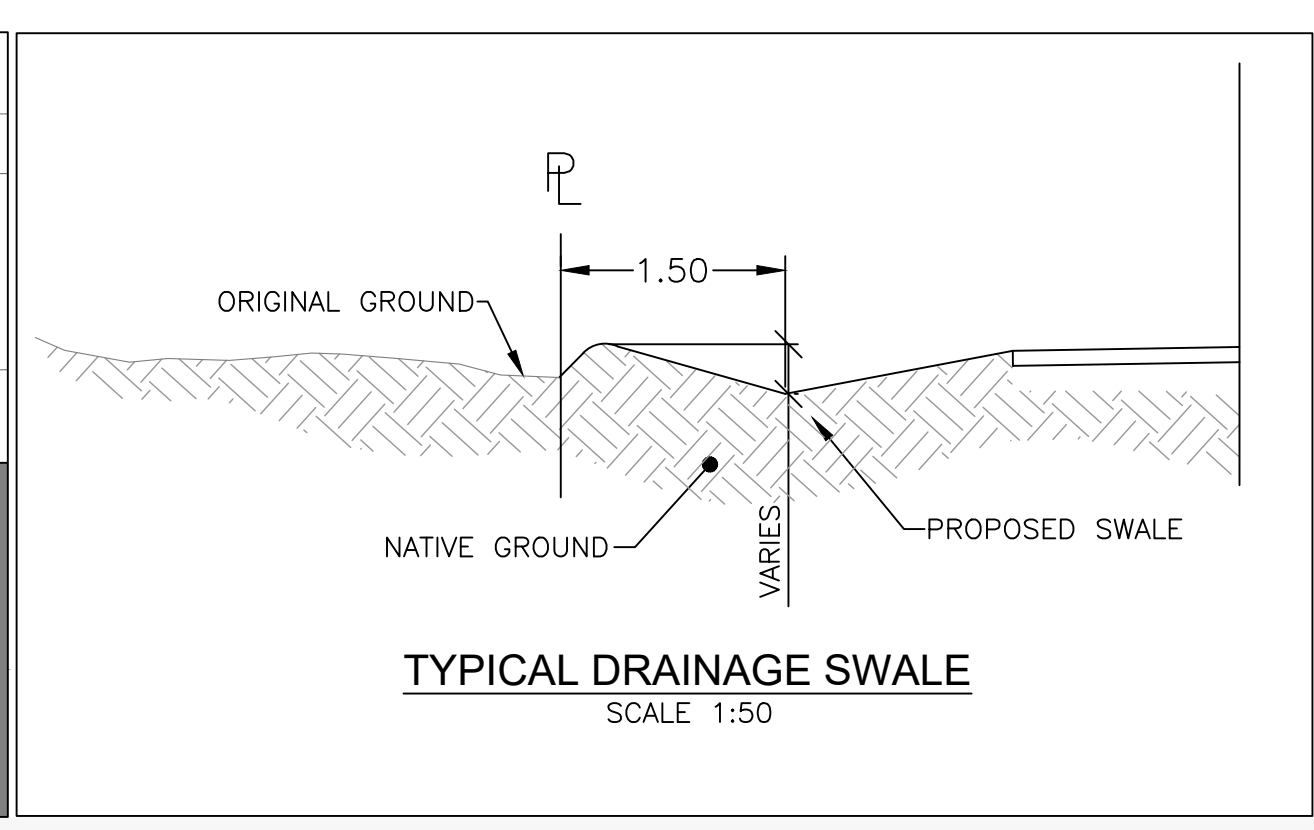
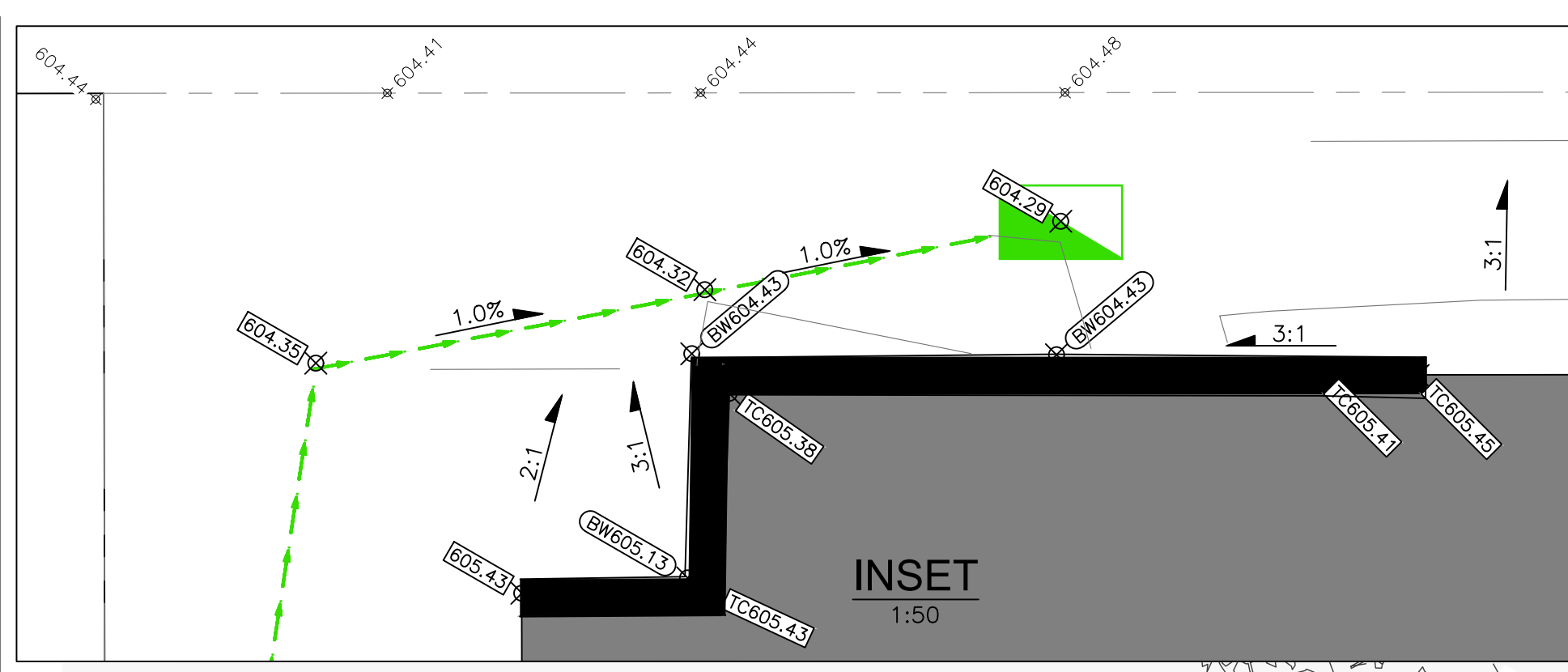
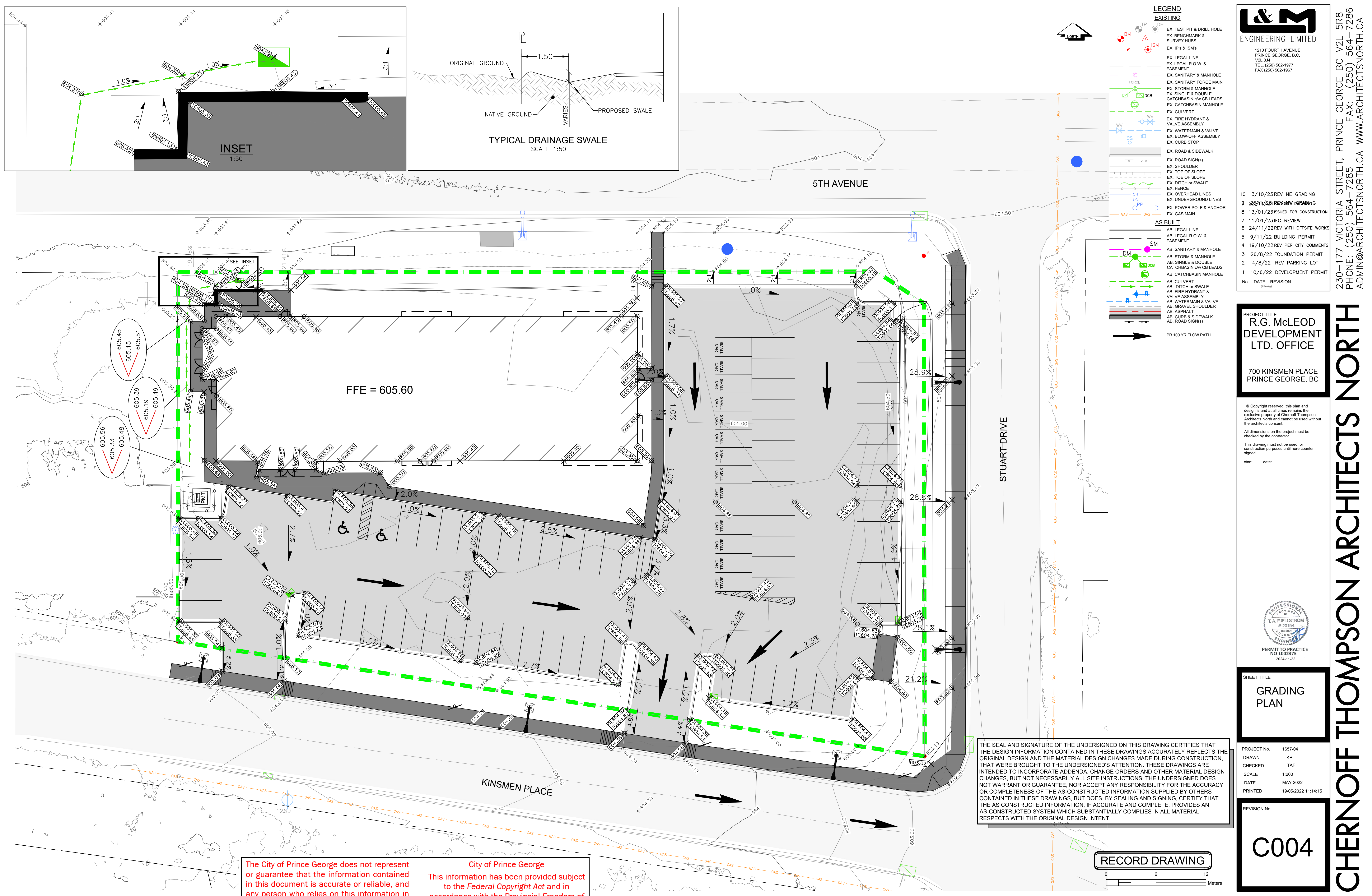
PROJECT No. 1657-04
 DRAWN KP
 CHECKED TAF
 SCALE 1:200
 DATE MAY 2022
 PRINTED 19/05/2022 11:14:15

REVISION No.

C004

CHERNOFF THOMPSON ARCHITECTS NORTH

230-177 VICTORIA STREET, PRINCE GEORGE BC V2L 5R8
 PHONE: (250) 564-7285 FAX: (250) 564-7286
 ADMIN@ARCHITECTSNORTH.CA WWW.ARCHITECTSNORTH.CA



LEGEND

EXISTING

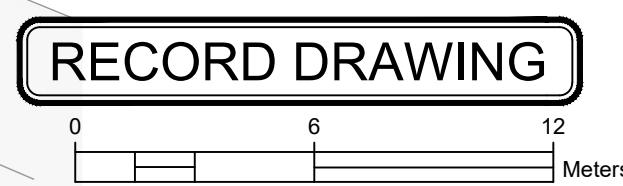
- EX TEST PIT & DRILL HOLE
- EX BENCHMARK & SURVEY MARKS
- EX IP's & ISM's
- EX LEGAL LINE
- EX LEGAL F.O.W. & EASEMENT
- EX SANITARY & MANHOLE
- EX STORM & MANHOLE
- EX SINGLE & DOUBLE CATCHBASIN w/ CB LEADS
- EX CATCHBASIN MANHOLE
- EX CULVERT
- EX FIRE HYDRANT & VALVE ASSEMBLY
- EX WATERMAIN & VALVE
- EX BLOW-OFF ASSEMBLY
- EX CURB STOP
- EX ROAD & SIDEWALK
- EX ROAD SIGN(S)
- EX SHOULDER
- EX TOP OF SLOPE
- EX TOP OF SLOPE
- EX DITCH or SWALE
- EX FENCE
- EX OVERHEAD LINES
- EX UNDERGROUND LINES
- EX POWER POLE & ANCHOR
- EX GAS MAIN

AS BUILT

- AB LEGAL LINE
- AB LEGAL F.O.W. & EASEMENT
- AB SANITARY & MANHOLE
- AB STORM & MANHOLE
- AB SINGLE & DOUBLE CATCHBASIN w/ CB LEADS
- AB CATCHBASIN MANHOLE
- AB CULVERT
- AB DITCH or SWALE
- AB FIRE HYDRANT & VALVE ASSEMBLY
- AB WATERMAIN & VALVE
- AB GRAVEL SHOULDER
- AB ASPHALT
- AB CURB & SIDEWALK
- AB ROAD SIGN(S)

PRR 100 YR FLOW PATH

THE SEAL AND SIGNATURE OF THE UNDERSIGNED ON THIS DRAWING CERTIFIES THAT THE DESIGN INFORMATION CONTAINED IN THESE DRAWINGS ACCURATELY REFLECTS THE ORIGINAL DESIGN AND THE MATERIAL DESIGN CHANGES MADE DURING CONSTRUCTION, THAT WERE BROUGHT TO THE UNDERSIGNED'S ATTENTION. THESE DRAWINGS ARE INTENDED TO INCORPORATE ADDENDA, CHANGE ORDERS AND OTHER MATERIAL DESIGN CHANGES, BUT NOT NECESSARILY ALL SITE INSTRUCTIONS. THE UNDERSIGNED DOES NOT WARRANT OR GUARANTEE, NOR ACCEPT ANY RESPONSIBILITY FOR THE ACCURACY OR COMPLETENESS OF THE AS-CONSTRUCTED INFORMATION SUPPLIED BY OTHERS CONTAINED IN THESE DRAWINGS, BUT DOES, BY SEALING AND SIGNING, CERTIFY THAT THE AS CONSTRUCTED INFORMATION, IF ACCURATE AND COMPLETE, PROVIDES AN AS-CONSTRUCTED SYSTEM WHICH SUBSTANTIALLY COMPLIES IN ALL MATERIAL RESPECTS WITH THE ORIGINAL DESIGN INTENT.



The City of Prince George does not represent or guarantee that the information contained in this document is accurate or reliable, and any person who relies on this information in this document does so at their own risk.

City of Prince George
 This information has been provided subject to the Federal Copyright Act and in accordance with the Provincial Freedom of Information and Protection of Privacy Act.